



**'THE VELLY HAPPY, BOSS.'** Wayne High Thespians practice a scene in the first act of their coming production, *Teahouse of the August Moon*, Thursday, Friday and Saturday, November 14, 15 and 16.

## Wayne High Thespians Polishing 'Teahouse'

Over 20 Wayne High Thespians are polishing off their acting as they enter the final week before their 1968 production—*Teahouse of the August Moon*. Based on the novel by Vern Sneider, the play is a comedy about the American occupation forces in Okinawa following World War II. The play promises to hold the attention of the audience throughout. Several years ago it was presented by Wayne High students.

The play will be presented in the Wayne High auditorium Thursday, Friday and Saturday, Nov. 14, 15 and 16, at 8:15 each evening. Tickets can be purchased in advance from cast members or Thespians and will be on sale in downtown Wayne both tonight and next Thursday night by cast members dressed in their costumes. Tickets are \$1 for adults, \$0.75 for high school students and \$0.50 for youngsters 12 and under.

The cast for the production includes James Sackin, James Stevenson, Jeanne Greig, Dennis Flernier, (Colonel Purdy), Ron Seymour (Captain Faby), Jeanne Suh (Old Woman), Jana Reeg (Old Woman), Jeff and Steve Sincic (Daughter's children), Lonnie Biltoff (Ancient man), Mike Baler (Mr. Hoidal), Ted Armbruster (Mr. Omura), Lonnie Biltoff (Mr. Sumata's father), Danny Proett (Mr. Seiko), Mary Stevenson (Miss Higa Jiga), Tom Karel (Mr. Keora), Linda Lesh (Lous Blossom), Doug Stanley (Captain McClean), Elaine Lundstrom, Jean Pankratz, Winona Peterson and Pam Renner (Dancers), and Norene Chapman, Jean Pankratz, Jana Reeg, Pam Renner, Stephanie Sincic, Jeanne Suh and Karen Wax (Ladies League for Democratic Action).

Inspection Law Will Affect All Motor Vehicles

In 1966 the Federal government passed a law which necessitates Nebraska to implement a statewide annual inspection of all vehicles or else lose ten per cent of the allocation of Federal highway funds.

One of a series of six meetings being sponsored by the Nebraska New Car Dealers Association to acquaint dealers with the Motor Vehicle Inspection Law was held Monday in Norfolk. Approximately 90 car dealers from northeast Nebraska, including several from Wayne, heard Rayfield E. Johnson, chief of the Division Inspection in Lincoln, describe the type of inspection stations needed, space requirements and the necessary equipment to make the inspections. He also spoke concerning items to be inspected and the methods to be used in making the inspections.

The Vehicle Inspection Law becomes effective Jan. 1, 1969. Owners of vehicles will pay a fee of \$4 per unit to have their car, pickup, semi-trailer or motorcycle, inspected annually. It is anticipated that it will take anywhere from 30 minutes to an hour for each inspection. Most car dealers will have an approved inspection station as well as several local service stations.

What will be inspected on your car or vehicle? The horn must see INSPECTION, page 3

## Southeast Asia Specialist Speaks at WSC Monday

A State Department specialist on Southeast Asia will visit Wayne State College Monday to address a seminar on foreign affairs. He is Maurice D. Bean, now a desk officer for Malaysia-Singapore affairs with the State Department in Washington. Before joining State, he held several positions with the Peace Corps in Malaysia, Indonesia and the Philippines from 1961 to 1966, and for 10 years prior to that he served with the International Cooperation Administration in the Far East and Washington.

Bean is scheduled to talk at a seminar at 12:30 in Ramsey Theater. While the seminar is planned for political science students, it is open to all students and the public. Bean also will visit several social science classes in the morning.

Norman Nordstrand, assistant dean of instruction, said Bean's appearance is the first of several

## Chest Campaign Hopes to Reach Goal of \$8,400

With partial returns, Wayne's Community Chest has reached about one-fourth of its goal at mid-day Wednesday. Campaign chairman Darrel Fuebnerth reported. The \$2,000 received so far, comes from approximately one-fourth of the potential contributors.

Many campaign workers are still visiting donors where they work, and hope to finish the visits as soon as possible, Fuebnerth said.

Although the Chest chose not to have a residential area campaign this year, many residents who are not employed, and not likely to be visited, may want to give, and they can give simply by sending a check or a pledge to the Community Chest Secretary, Ted Bahe.

Chest President Larry DeForge explained the decision to eliminate the residential campaign this way: "It required a lot of effort by many people, and frequently they had residents tell them they were giving where they worked. As a result, the Chest directors thought it would be wise to put all their effort into the business campaign."

But DeForge added, "We do not want to overlook anybody who wants to help the Chest agencies."

## Republicans in Wakefield Fete Hear Galbraith

William Galbraith, past-national Commander of the American Legion, said in a speech given before the Dixon County Republican banquet in Wakefield Saturday night, "South Vietnam is a miserable place to fight, but do you know that South Vietnam has vast areas of land with rich soil and proper rainfall to produce food even in excess of our rich Missouri bottom land if properly used. With the know-how from our country, they could raise enough food to feed sixty per cent of Asia."

Galbraith visited South Vietnam last year as a Nebraskan and his observations help me to understand why the Communists in North Vietnam want to rule South Vietnam, as they are in need of the rich land on which to produce food, inasmuch as North Vietnam is concentrated with industry.

"At the beginning of the war," he continued, "North Vietnam see REPUBLICANS, page 3

## Wayne Jaycees Will Work on 'Honey Sunday'

Wayne Junior Chamber of Commerce will take part again this year in Nebraska Honey Sunday, according to Roger Nelson, secretary. Chairman for the Honey Sunday committee will be Darrel Fuebnerth.

Serving as Honorary Chairman of Nebraska Honey Sunday will be Mrs. Norbert Tiemann, making the second consecutive year she has helped in the state-wide effort for mentally retarded.

The Nebraska State Association for Retarded Children (NSARC) and the Nebraska Jaycees are co-sponsors for the annual door-to-door fund-raising drive. Kay Rising, Lincoln, is the state "Honey Sunday" chairman for the Jaycees, and Jack Boren, Grand Island, is chairman for the NSARC.

Local chapters of the two organizations will organize door-to-door solicitation programs in communities throughout the state. Volunteers from church organizations, youth groups, Boy Scouts and others help with the one-day honey sales program.

Net proceeds from the sale of honey go to support programs for the mentally retarded in the state.

## County Officials To Attend State Training School

Henry Arp, county assessor, and Doris Stipp, deputy county assessor, will attend the annual week-long training school Monday through Friday at the University of Nebraska Center in Lincoln.

The training course for assessors is conducted by the State Tax Commissioners Office and is staffed by instructors from the International Association of Assessing Officers. The annual school is required by state law.

The instructors, Charles Barr of Illinois and Robert Flanagan and Edward Vermilya of Connecticut, will concentrate their attention on the three approaches to valuing real estate—market value, income value and cost.

They also will give attention during one day of the meeting to approaching to valuing farm and ranch lands in the Midwest.

Wilbur Houtchens, a member of the staff of the State Tax Commissioners and in charge of planning the conference, said that the school is also drawing assessors from other states. Fifteen officials from Kansas, three from Wyoming and three from Missouri will be on hand, as well as several persons from private appraisal firms and various industries.

County and state officials from Nebraska will pay a \$25 tuition charge, while others will be charged \$45 for the course. A federal grant will also assist with the expenses of the school.

## Uncle Sam Takes Veterans Day Off

Wayne Post Office and the Wayne County courthouse will be closed Monday because of Veterans Day.

At the post office there will be no rural or city deliveries that day. Collection and dispatch of mail will be on a Sunday schedule as will be the distribution of mail to boxholders.

Those having business at the courthouse should remember it will be closed for the holiday. There will be no tests for drivers licenses given that day; they will be given the following Monday.

# L. Hilton Takes County Judge Post; Nixon, Denney and Income Tax Win

## Cross Your Fingers, Your Name Might Be Called Tonight

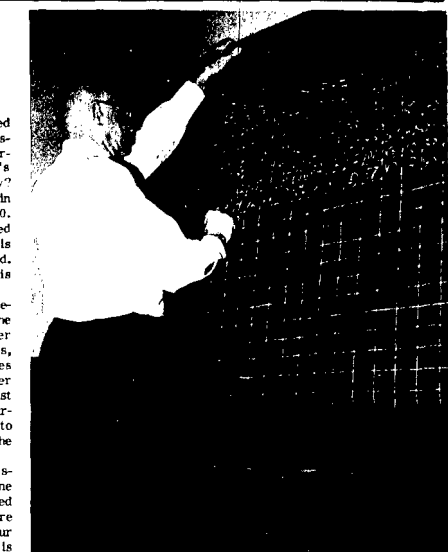
Have your fingers crossed when you come to town Thursday night. If you're really superstitious, carry your lucky rabbit's foot in your coat pocket. Why? Well, it just might help you win the Cash Night prize of \$250.

The prize has gone unclaimed for three straight weeks. This may be the week it's claimed. It would come in handy at this time of the year.

There are only three requirements for being eligible for the weekly prize—you must register in one of the cooperating stores, you must be in one of those stores if your name is called in order to claim the prize and you must be at least 18 years old. No purchase is required in order to have your name included in the bin.

Each week at 8 p.m. on Thursday night the person whose name has been drawn is announced in all of the stores. If you are in one of those stores and your name is announced, the prize is yours.

Plan on being in Wayne tonight at 8 p.m.—you could be the winner this week.



WAYNE COUNTY JUDGE David Hamer, posts election returns Tuesday night in the Wayne County courthouse corridor. Judge Hamer plans to retire in January after serving as County Judge since 1955.

Wayne County voters Tuesday elected their first woman as county judge, voted to retain Educational Service Unit 1 and elected Bob Bergt to continue as a director of the educational service unit. As expected, the county voted strongly in favor of Richard Nixon and Robert Denney.

In the judge's race, Mrs. Luverna Hilton, held a steady lead over Gordon Nuernberger, but the issue was in doubt until the last ballot box was brought in from Third Ward in Brown. Mrs. Hilton received 1,823 votes to Nuernberger's 1,469 in the unofficial total.

The Bob Bergt-Warren Marotz vote showed only a three-point spread when the Third Ward votes were brought in for counting. Final unofficial figures show Bergt with 1,541 to Marotz' 1,358.

Voting strongly favored retention of Wayne County in Educational Service Unit 1, with a final tally of 1,912 voting against exclusion and 1,200 voting in favor of exclusion.

Republican Candidate Richard Nixon received 2,446 votes in the Presidential race in the county, while Vice-President Hubert Humphrey was getting 736 votes. Third Party Candidate George C. Wallace received 184 ballots.

The record turn-out of voters expected did not materialize as only 3,574 persons voted Tuesday. In the 1964 presidential election 3,824 voters went to the polls in the county. County Clerk Norris Weibull said 4,226 voters are registered.

Absentee and disabled voters this year are 15 greater than four years ago. In 1968 there were 208 such ballots requested as compared to 193 in 1964.

These votes will be counted when the canvassing board meets to make the counts official.

Wayne County voters also strongly favored an income tax in the state, casting 2,497 votes against Initiative Petition No. 300 which would prohibit the state from levying an income tax. Only 773 voted in favor of the measure.

Robert Denney easily outdistanced his Democrat opponent Clair Callan in the race for the Congressional seat in the First District. Denney kept his post and held a count of 2,314 over Callan's 1,001.

Returns Wednesday morning appeared to indicate that Elmer Wallway State Senator from the Seventeenth District had defeated Bob Murphy's bid to unseat him for the post. In Wayne County Wallway received 1,848 votes and Murphy 1,185.

Keith Owens defeated Stanley Hansen in the race for director of Wayne County Public Power District, Sub-division One, by a vote of 335 to 312.

In the race for supervisors of the Wayne County Soil and Water Conservation district Leo Hansen, Werner Mann and Glen Olson were successful, edging out the fourth candidate, Edgar Heismann.

Three men were elected to the Noxious Weed Control authority from a state of five. Successful were Henry Doring, Dwayne Retzwich and Ernest Muls. Claires Vogel and Alfred W. Baden were the unsuccessful candidates.

Running unopposed for offices were Bernard M. Delay for director of Consumers Public Power District, subdivision two; Willis Meyer, for director of Wayne County Public Power District, subdivision two; and George Stolz, for county commissioner, second district.

A precinct and ward breakdown of the county voting for the most important posts is shown here.

## Wayne Co. Voters Say 'No' to Proposals To Lower Voting Age, Halt Income Tax

Wayne County voters Tuesday rejected 14 of 16 proposed amendments to the Nebraska Constitution.

In an election turnout possibly dampened by the weather, the people voted against the constitutional amendment to lower the voting age from 21 to 19 by a vote of 1,749 to 1,442. They also strongly rejected the amendment (No. 300) which would do away with the state income tax by a vote of 2,497 against to 773 for.

Two amendments to the Nebraska Constitution passed in Wayne County by the slim margin of one vote each. Amendment No. 7, permitting the legislature to increase the number of county offices passed in Wayne County by the small margin of 101 votes—1,413 to 1,312.

The Legislature will be empowered to hold special elections to submit proposed constitutional amendments to the electors in

electricity, passed by a vote of 1,248 to 1,247.

Amendment No. 9, dealing with a board of parole and the granting of pardon to prisoners, passed by the largest margin of votes, 1,955 for to 645 against. The amendment to increase the pay of legislators, No. 15, received great support in Wayne County, passing by a vote of 1,993 to 899. The amendment to permit the Legislature to authorize lotteries, raffles and gift enterprises also received heavy support in the county. It passed by a vote of 1,888 to 936.

The amendment which would provide for the consolidation of county offices passed in Wayne County by the small margin of 101 votes—1,413 to 1,312.

The Legislature will be empowered to hold special elections to submit proposed constitutional amendments to the electors in

## Health Program for Middle School Approved by Wayne School Board

A health program for the Wayne Middle School received the full approval of the Wayne City Schools board of education at its regular monthly meeting Monday evening. The program will be instituted in the curriculum in the 1969-70 school year.

Each child in the Middle School would take the health course. Room would be made for it in the curriculum, as now planned, by decreasing the offering in science or physical education from a full year to three quarters in grades seven and eight. The content and material would be expanded in grades five and six.

Presenting the major outline for the health program were Middle School Principal Loren Park and School Nurse Mrs. Cottrell.

Their outline stressed eight areas of study which would be taught at each of four grade levels: body structure, physical fitness, community health, individuality, mental health, human relations, family living and safety.

The board also approved a sick-leave policy for school children. The policy provides an annual sick or family emergency leave of five days per year for each child. The sick leave will be paid on an hourly basis. It became effective Nov. 1.

The statement of philosophy for the Wayne-Carroll Schools was presented to the board for its consideration but no action was taken. It will again be considered at the board meeting See HEALTH, page 3

## Weather

	HI	LO	Precip.
October 30	80	30	
October 31	72	38	
November 1	74	40	
November 2	64	34	
November 3	52	20	
November 4	58	38	
November 5	60	40	Tr.

## County Precinct and Ward Voting Breakdown

	Nixon	Humphrey	Wallace	Denney	Callan	Hamilton	Wayne	Murphy	DeLay	Helsmann	Olson	Hansen	Mann	Hilton	Nuernberger	Vogel	Doring	Retzwich	Muls	Bergt	Marotz	Stolz	For 300	Against 300	For ESU	Against ESU	
Logan	91	35	11	75	59	-	90	38	90	67	101	86	66	56	79	39	68	50	66	49	40	57	-	28	106	54	61
Sherman	55	17	-	53	19	-	27	33	59	32	42	47	46	24	39	16	27	62	55	20	16	43	61	13	58	18	43
Leslie	58	18	1	54	25	-	55	21	64	47	56	47	50	31	47	41	58	17	51	32	38	23	-	17	60	51	23
Plum Creek	91	39	9	91	39	9	88	30	90	81	79	84	80	83	44	49	91	37	92	62	78	46	-	17	103	70	50
Garfield	76	18	4	83	16	4	51	35	82	51	59	67	72	45	50	28	45	59	64	41	21	58	88	21	75	48	35
Brenna	74	15	18	73	31	3	71	29	84	71	60	88	77	76	29	38	50	56	80	43	31	63	-	29	74	58	44
Hancock	86	13	3	82	21	1	49	48	79	72	44	77	84	61	40	37	57	47	72	43	12	85	-	34	69	55	95
Deer Creek	129	33	19	127	52	1	87	69	132	84	106	137	117	100	80	47	101	105	138	72	57	99	162	48	129	64	107
Winside	132	31	15	131	46	-	77	71	142	105	79	135	136	122	54	52	101	88	100	83	36	129	-	52	116	89	102
Hoekins	178	26	17	183	32	5	102	71	176	108	99	135	156	101	112	65	103	93	109	102	27	156	-	53	161	85	78
Hunter	125	40	12	124	32	-	117	48	109	96	146	126	104	98	76	61	129	49	134	77	95	55	-	46	123	89	102
Wilbur	81	35	8	76	46	3	82	30	93	67	84	109	81	81	44	38	91	52	97	59	59	44	110	38	91	69	50
1st Ward	335	141	16	308	170	6	273	164	356	237	324	328	279	281	204	179	327	146	301	238	300	115	-	114	369	137	329
2nd Ward	360	122	19	330	169	2	246	211	365	250	324	344	246	260	228	216	294	148	296	216	297	129	-	115	279	140	328
3rd Ward	359	115	18	326	148	4	272	176	371	226	328	357	289	238	233	193	319	182	328	172	306	126	-	115	279	140	328
Chapin	92	15	6	74	36	3	64	176	83	70	59	88	86	65	46	45	68	59	75	40	36	70	-	35	77	47	62
Strahan	129	39	4	124	40	2	97	60	128	89	97	135	123	101	64	55	118	70	140	87	92	60	-	39	119	65	88
Totals	2446	736	184	2314	1001	34	1848	1165	2503	1753	2087	2390	2072	1823	1469	1199	2077	1320	2198	1416	1541	1358	421	773	2497	1200	1912

# HOSKINS NEWS

Mrs. Hans Asmus - 565-4412

Mrs. Roy Jensen, Omaha, and Mrs. Ruth Langsen were Saturday afternoon visitors at the Claus Rathman home. Mr. and Mrs. Ed Rathman, Wayne, were Sunday visitors at the Rathman home.

Mrs. Louis Wink, Merville, Ia., visited at the Mrs. Minnie Krause home Thursday evening.

Kay Melehenry, five-month-old daughter of Mr. and Mrs. Melvin Melehenry, was taken to a Norfolk hospital Friday for medical treatment.

Saturday evening. Each member invited a guest. Leroy Graves drove the tractor. After the ride a lunch of hot chocolate and cookies was served at the Brotherhood Building.

Entertain Club  
Mr. and Mrs. Delbert Hoover entertained Mr. and Mrs. Carl Club at their home in Norfolk Friday evening. Guests were Mrs. Betty O'Connell and Jack Hoover. Prizes were won by Mrs. William Vierzog, Harry Schwede and Clarence Boie. The next meeting will be Nov. 15 at the Harry Schwede home.

Card Club Meets  
Mr. and Mrs. George Wittler entertained G.G. Card Club Friday evening. Mr. and Mrs. Awalt Walker were guests. Mr. and Mrs. Reuben Puls received high prize; Ed Melehenry, second high; Carl Wittler, traveling; Mrs. Erwin Ulrich, low and Mr. and Mrs. Walker, guest prizes. The next meeting will be a Christmas party, Dec. 6, at the Ed Melehenry home with a chill supper and gift exchange.

## Society -

Garden Club Feted  
Amelia Schroeder was hostess to Hoskins Garden Club members and their husbands at the annual pre-thanksgiving dinner at the Otto Ulrich home Sunday evening. Guests were Mr. and Mrs. Otto Ulrich, Christine Luecker, Lucille Smith, Jack Fenske and Pastor John Saxton. Group singing was in charge of Amelia Schroeder with Miss Luecker accompanying. Mr. and Mrs. Erwin Ulrich showed slides of their trips to Hawaii, Fla. and other states.

Turkey Dinner Held  
Town and Country Garden Club and their husbands had a turkey dinner at the George Langenberg home Sunday evening. Mr. and Mrs. Clint Heber were guests. Prizes were won by Mrs. Awalt Walker and Clarence Schroeder, high; Mrs. Wayne Thomas and George Langenberg, second high; Mrs. Ed Kollath and Jack Pingel, low; Mr. and Mrs. Heber, guest prizes and Mrs. Arthur Behmer, special prize.

YPS Meeting Held  
Young People's Society met Monday evening at the parochial school basement. Douglas Deck presided. Plans were made to have a roller skating party. Pastor Lindquist showed a film, "Books of the Bible". Diane Bruggeman and Douglas Deck served refreshments. The next meeting will be Nov. 25 at the school basement.

Hay Ride Held  
The confirmation class of Peace United Church of Christ and Hoskins United Methodist Church enjoyed a hayrack ride

Mrs. Ann Roggow. The occasion also honored another sister, Mrs. Tom Callister, Manteca, Calif. Pingela also visited in the Jimmy Jean home, Slayton, Minn. They returned Oct. 27.

Mrs. J. E. Pingel, Mrs. Edwin Brogde, cooks of the Hoskins Public School, and Mrs. Myron Marshall, cook at Hoskins parochial school, attended the cooking school meeting Nov. 2 at Osmond.

## Churches -

Trinity Ev. Lutheran Church (J. E. Lindquist, pastor)  
Thursday, Nov. 7: Ladies Aid, 1:45 p.m.

Sunday, Nov. 10: Sunday school, 9:45 a.m.; family worship, 10:30.

Peace United Church of Christ (J. E. Saxton, pastor)

Thursday, Nov. 7: Dorcas Society at the church, Mrs. George Langenberg, sr., hostess, Mrs. Elmer Kube, program.

Saturday, Nov. 9: Confirmation class, 9:30-11:30. No session on Saturday, Nov. 23.

Sunday, Nov. 10: Worship, 9:30 a.m.; church school, 10:30. Wednesday, Nov. 13: Peace Women's Missionary Society

## DIXON NEWS

Mrs. Dudley Blatchford - Phone 584-2588

School Party Held

A Halloween party was held Thursday afternoon at Dixon school. Winner of the Costume Contest from Mrs. Taylor's room was Laura Hansen; from Mrs. Lund's room, Kris Young, and from Mrs. Stanley's, Tim Garvin. Following the contest, games were played and lunch was served by the room mothers. Halloween was also pre-kindergarten round-up day. Seven boys and a girl will begin the second semester.

Cub Scouts Meet

Cub Scouts met Wednesday afternoon in the Allen Prescott home. After the business meeting, Halloween games were played. Randy Dunn served lunch. Clayton Hartman will serve next week.

Mr. and Mrs. Ernest Lehner recently moved into Dixon from their farm north of town. On Tuesday afternoon eight ladies came for a surprise housewarming.

Mr. and Mrs. Paul Wittg and family, South Sioux City, were Sunday dinner guests of Mrs. Ruth Wittg.

Mr. and Mrs. Marlon Quist were dinner guests Sunday in the William Enstrom home, Okand. They were supper guests Tuesday in the Gene Quist home, Pflger.

Mrs. Bonnie Fegley, Bakersfield, Calif., left after spending a week visiting in the home of her parents, Mr. and Mrs. Newell Stanley and with other relatives.

Members of the Logan Center church attending the reception

thanksgiving meeting with Mrs. Steve Nettleton, Norfolk hostess at her home, 1:30 p.m. Peace choir rehearsal, 8.

United Methodist Church (J. F. Saxton, pastor)

Saturday, Nov. 9: Confirmation class, 9:30-11:30.

Sunday, Nov. 10: Sunday church school, 9:30 a.m.; worship, 11.

Tuesday, Nov. 12: Meeting of local conference will be held at the church.

Mr. and Mrs. Joe Burlington and Mr. and Mrs. Donald Gloyd, Meadow Grove, were Sunday afternoon guests at the Emil Gutzman home.

Mr. and Mrs. Duane Pawling and family, Hooper, were Sunday dinner and supper guests at the Herman Opler home.

Mr. and Mrs. Roy Jensen and Cindy, Omaha, spent the weekend in the Ruth Langenberg home.

Mr. and Mrs. Claus Rathman returned home Friday after visiting since Tuesday in Omaha. Mrs. Lucille Asmus was among dinner guests Sunday in the Vernon Delp home, Woodland Park, honoring Sir Ronald Asmus, who is home on leave.

For Bishop Noah Moore in Ne-gh, Wednesday evening were Mr. and Mrs. Roy Johnson, Mr. and Mrs. C. E. Miner, Mr. and Mrs. Ray Dickey, Mr. and Mrs. Melvin Manz, Mr. and Mrs. Harold George, Mr. and Mrs. Warren Patfield and Mrs. Lucille Thompson. Several of them stopped at the Osmond Hospital and called on Rev. Jesse Withee enroute to Ne-gh.

Visitors the past week in the Clayton Stingley home to visit Randy were Mr. and Mrs. Clarence McCaw and Gloria, Mr. and Mrs. Glen Stingley, Randolph, Mr. and Mrs. Gerry Cunningham and family, Laurel, Mrs. Ronald Ankeny, Mr. and Mrs. Paul Borg and Mr. and Mrs. Lloyd Wendel and family.

Mr. and Mrs. Ralph Bridgeford, Newcastle, Dannie Heydon, Durango, Colo., and Mrs. Robert Smith and daughters were Tuesday dinner guests in the Walter Schutte home.

## Churches -

United Methodist Church (Jesse A. Withee, pastor)  
Sunday, Nov. 10: Worship, 9:30 a.m.; Sunday school, 10:30.

Logan Center United Methodist (Jesse A. Withee, pastor)  
Thursday, Nov. 7: WSCS, 2 p.m., prayer service, 7:30 p.m. Sunday, Nov. 10: Sunday school, 10 a.m.; morning worship, 11; Youth Fellowship, 7 p.m.; evening service, 7:30.

St. Anne's Catholic Church (Anthony M. Milone, pastor)  
Saturday, Nov. 9: Grade school catechism, 9 a.m.; confessions, 8-8:30 p.m.

Sunday, Nov. 10: Mass, 10 a.m. Monday, Nov. 11: High school instruction, 6-7 p.m.

Mrs. Earl Curtis, Omaha, was a weekend guest in the Ray Spahr home.

Sunday dinner guests in the Ray Spahr home were Mr. and Mrs. George Krejcek, Omaha, Mr. and Mrs. Julius Oberding and Mr. and Mrs. Joe Hinkle, Randolph.

Mr. and Mrs. Duane White and family spent Sunday evening in the Ralph White home at Martinsburg.

Annette Schutte, Lincoln, spent the weekend in the Walter Schutte home. Maureen Spath was a Sunday dinner guest.

Rev. Wesley Frank, South Sioux City, will be filling the pulpit in the Dixon Methodist and Logan Center Church until Rev. Jesse A. Withee is able to be back.

Gene Hansen and Paul Noe, Lincoln, spent the weekend in the Leslie Noe home.

On Monday evening Mr. and Mrs. Freddie Mattes visited in the Francis Mattes home in honor of Trudy's birthday.

Mr. and Mrs. Oscar Johnson spent the weekend in Watertown, Minn., where they attended the 50th wedding anniversary of Mr. and Mrs. Rudolph Johnson.

Gary Oxley and Jim Johnson, Louisville, and George Oxley, Papillion, were Friday overnight and Saturday guests of Mr. and Mrs. Don Oxley.

Mr. and Mrs. Neal Oxley, Omaha, were Saturday overnight and Sunday visitors in the Don Oxley home.

Mrs. John Tillotson, Elgin, Ia., spent the weekend in the Frank Tomason home.

Neel Melheim will show pictures and tell of her trip to the Holy Land next Sunday evening, Nov. 10, at 7:30 p.m. at Logan Center Church. Miss Melheim lives in Sioux City, has traveled extensively and is widely known

for her travelogues. Everyone is invited.

## Allen

Mrs. Ken Linafelter  
Phone 435-2483

School Pigeons

School Pigeons Club of Harmony Hill met Friday afternoon with president, Robert Bock, presiding. Each person answered roll call by naming a favorite cold cereal. It was decided that if a student does not do his job well that he must keep that same job next week. Bryce Chapman will be in charge of manners next week. School Pigeons held a Halloween party Thursday afternoon. Costumes were judged and Mrs. Ken Linafelter, was chosen as the best. He was named "Miss Hollow of 1968". Lorna and Roy Bock were in charge of games. Robert Bock and Bryce Chapman served lunch. Keith Rhode was a guest at the party.

FLP Club Meets

FLP Club met Tuesday with Mrs. Ken Linafelter. Twelve members and a visitor, Mrs. Dwight Kemling, were in attendance. Mrs. Lynn Schluemaker and Mrs. Don Kruse are new members. Mrs. Don Kruse received the door prize. New officers are Mrs. Keith Hill, president; Mrs. Duane Koester,

vice president; Mrs. Ken Linafelter, secretary and Mrs. Paul Hahn, treasurer. Mrs. Keith Hill and Mrs. Allen Trube presented the lesson on patternizations. November meeting will be a tour to Sioux City.

Achievement Day Held

Wranglers 4-H Club held achievement day meeting Oct. 25 at 8 p.m. in the Allen Club room. Leaders presented members with completion sheets for various projects. Frank Plueger, leader, handed out the premium money earned and also the county awards. Each member told of the projects he carried and ribbons won. A short skit was held in honor of Connie Sachau and Ronald Kraemer who have completed their last year in 4-H. The results from the point system were given. Colleen Chapman received the most points in the Junior division and Bill Sachau in the senior. They were presented with a gift by assistant leader, Orville Nobbe, Lyle George and Jerry and John Warner were hosts at the meeting. Bill Sachau, reporter.

Mr. and Mrs. Ralph Anderson, South Sioux City, and Mr. and Mrs. Harold Wellington, St. Helena, Ore., were last week callers in the Gene Wheeler home.

Mrs. Katie Wheeler, South Sioux City, and Mrs. Ella Brockhauser, Plattsmouth, were

Wednesday visitors in the Gene Wheeler home.

Callers in the Monie Lundahl home this past week were Mrs. Virgil Carlson, Mrs. Basil Wheeler, Mrs. Anna Janssen, Mrs. Oscar Koester, Mrs. Harold Durant, Mr. and Mrs. Dale Taylor and Mrs. Richard Osbahr, South Sioux City.

The following Allan High students attended the Lewis and Clark Vocal Clinic at Whinsdale Monday: sopranos, Jill Fahrtenholz, Kathy Geddes, Debbie Jones, D'Vee Koester, Jean Serven, Sue Thomas; altos, Cindy Ellis, Valorie Koester, Debra Menkens, Patricia Sullivan, Nancy Swanson; tenors, Mike Ellis.

Dan Hickman, Richard Kraemer, Tom Maggart, Gary Troth, Curt Wheeler and basses, Bruce Linafelter, Brian Linafelter, Bill Sachau, Jerry Warner, Doug White and Paul Calvert. Jack Schrieber is director.

## Belden Churches -

Presbyterian Church (Keith Cook, pastor)  
Sunday, Nov. 10: Church, 9:30 a.m.; Sunday school, 10:30.

Catholic Church (John Flynn, pastor)  
Sunday, Nov. 10: Mass, 10 a.m.

**FREE..**  
**The Flippiest Flip**  
**in town!**

Free in every twin-pack bag or box now at your favorite grocers

from the chippiest chips around  
**HILAND**  
**POTATO CHIPS**

**Gambles** COLD WEATHER SPECIALS  
The Friendly Store

Throat Dry? Lips Parched?

**CORONADO 35,000 BTU VENTED GAS HEATER**  
\$89<sup>95</sup>

NEW combustion chamber made it possible to reduce the size of this cabinet by nearly a third, yet it's even more efficient!  
55,000 BTU Model... \$119.95 NO MONEY DOWN  
70,000 BTU Model... \$129.95 \$1.50 a Week, Pay Monthly

Automatic BLOWER... \$26.95

Heats 1-2 Rooms

Fully Automatic  
For LP or Natural Gas  
100% Safe Shut-off Pilot

2-Speed Push Button Control  
Humidistat with Automatic Shutoff  
Smart Modern Styling

**CORONADO Humidifier**  
Maintains the humidity level you select. Evaporates up to 14 gallons of water a day. Built-in refill hose. Louvered styling in mocha baked enamel.

\$49<sup>95</sup>  
NO MONEY DOWN \$5.00 a Month

Free Package **LONGLIFE** Fish Food  
WITH PURCHASE OF \$1.00 OR MORE

**LAMBERT TROPICAL FISH**  
40 VARIETIES OF TROPICAL FISH

713 Pearl Street Phone 375-2088  
Open Afternoons and Evenings... All Day Saturday  
GOOD THROUGH NOVEMBER 9

**'It's the Talk of the Town'**

"IT'S DELIGHTFUL" "IT'S DELICIOUS"  
"IT'S DELECTABLE"

**HAMBURGER and MALT**  
(10 Different Flavors)

SUN. thru THURS. 10 to 11 - FR. 10 to 12 - SAT. 10 to 1  
We Use Only U.S.D.A. Inspected 100% Pure Ground Beef

**FREE**  
**Box of Chicken**  
If Your Phone Number is Listed Below:

375-2804  
375-3709  
375-1296  
375-1482  
375-1735

Chicken must be Claimed by Saturday, November 9.

**Lil' Duffer**  
**BURGER BARN**

**3 DAYS ONLY**

Compare to Gillette 5-Pack at 79c Satisfaction Guaranteed!

**LISTERINE ANTISEPTIC** 75c 7-oz. size **44<sup>c</sup>**

**GLENSHERE** Super Stainless Steel Double Edge 5-Pack **33<sup>c</sup>**

**AQUA-NET HAIR SPRAY** Jumbo Size Reg. or Super Hold **47<sup>c</sup>**

**GAMBLES 5 Grain ASPIRIN** Bottle of 100 Limit 2 **17<sup>c</sup>**

Compare to BAYER Aspirin 100's at 98c

**SAVE FROM 30%-40% ON ALL HEALTH & BEAUTY AIDS AT GAMBLES**

**VARCON Deluxe Batteries**

6-Volt - Gr. 1 <b>\$12<sup>95</sup></b> EXCL.	12-Volt - Gr. 24C <b>\$16<sup>45</sup></b> EXCL.
12-Volt - Gr. 22FC <b>\$14<sup>95</sup></b> EXCL.	12-Volt - Gr. 29F <b>\$17<sup>95</sup></b> EXCL.

Guaranteed 36 Months!

# Social and Club News

## Miscellaneous Shower Honors Deanna Smith

A miscellaneous shower was held Sunday afternoon at the Carl Wittler home, Hoskins, honoring Deanna Smith of Newman Grove. Twenty-five guests attended. Decorations were in red and white. Contests furnished entertainment. Bernice Langenberg was in charge of the gift book. Hostesses were Mrs. Stanley Langenberg, Mrs. Norris Langenberg, Mrs. Harold Wittler, Mrs. Carl Mann and Mrs. Carl Wittler.

## Mrs. B. Osburn Hosts Golden Rod Saturday

Mrs. Hasell Osburn was hostess to Golden Rod Club Nov. 2. Tent-pitch furnished entertainment with Mrs. Lottie Schroeder receiving high. Mrs. Ed Kluge, low and Mrs. Elhardt Pospisil, traveling and hostess gift.

## Coterie At Ahern Home

Mrs. J. F. Ahern was hostess to Coterie Monday. Hosting the Nov. 11 meeting will be Mrs. A. W. Ahern.

## OES Kensington Sewing Items for New Temple

Eastern Star Kensington meeting was held Saturday in the home of Mrs. B. J. Brandtetter. Mrs. Howard Witt and Mrs. A. F. Gulliver were on the serving committee. Mrs. F. I. Moses had the program. The ladies will be sewing items for the new temple. The Dec. 6 meeting will be with Mrs. Lucille McClure.

## Mrs. B. Osburn Hosts Golden Rod Saturday

Mrs. Hasell Osburn was hostess to Golden Rod Club Nov. 2. Tent-pitch furnished entertainment with Mrs. Lottie Schroeder receiving high. Mrs. Ed Kluge, low and Mrs. Elhardt Pospisil, traveling and hostess gift.

## Coterie At Ahern Home

Mrs. J. F. Ahern was hostess to Coterie Monday. Hosting the Nov. 11 meeting will be Mrs. A. W. Ahern.

## Name New Officers at BC Club Meet Friday

BC Club held a meeting Nov. 1 at the home of Mrs. Warren Baird. Eleven members were present. New officers elected were Mrs. Clarence Johnson, president; Mrs. Glenn Wade, vice president, and Mrs. Richard Reeg, secretary-treasurer.

## Pitch Club at Hansens

Monday Pitch Club met Nov. 4 with Mrs. R. H. Hansen. Prizes were won by Mrs. Julia Laas and Mrs. Herbert Green. Nov. 18 meeting will be with Mrs. Emma Hlicks.

## Mrs. Berres Hosts Acme

Mrs. Lillian Berres was hostess to Acme Club Monday. Nov. 18 meeting will be with Mrs. Cal Ward.

## Social Scene

Thursday, Nov. 7  
Altona Trinity Aid  
Friday, Nov. 8  
Woman's Club  
FNC, Mrs. Laverne Wischhof  
Monday, Nov. 11  
Eastern Star  
Minerva Club, Mrs. Don Herl  
At W Auxiliary  
Coterie, Mrs. A. W. Ahern

## Farewell to Pastor

A farewell dinner was served Sunday by the congregation of Trinity Lutheran honoring Pastor and Mrs. Mueller and family. They were presented a silver tray inscribed with the dates of their pastoral ministry in Winside.

Pastor and Mrs. Otto H. F. Mueller, who have served Trinity Lutheran Church, Winside, since July, 1961, will be moving to Liberty, Ill., Nov. 15, where they will serve Zion Lutheran Church and St. Peter's Lutheran Church. Rev. Mueller will deliver his first sermon in his new charge Nov. 17.

## BIRTHS

Oct. 28: Mr. and Mrs. Noah Hobbs, Denver, a son, Kenneth Martin, 8 lbs., 14 oz., Kenneth Smith, Belden, is grandfather. Mrs. Hobbs is the former Sharon Smith of Belden.

Oct. 28: Mr. and Mrs. John Sebade, Emerson, a daughter, 4 lbs., 2 oz., Wakefield Hospital.

Nov. 1: Mr. and Mrs. Robert Wredt, Wayne, a daughter, 7 lbs., 10 oz., Wakefield Hospital.

Nov. 3: Mr. and Mrs. Robert Hansen, Wakefield, a daughter, 7 lbs., 14 oz., Wakefield Hospital.

Nov. 3: Mr. and Mrs. Archie Lindsay, a son, Scott Keith, 7 lbs., 6 oz. Grandparents are Mr. and Mrs. Clifford Lindsay.

Read and Use The Wayne Herald Want Ads - The Little Ads That Do the BIG JOB

# CHURCH NEWS

**First United Methodist Church**  
(Ceel Elias, pastor)  
Saturday, Nov. 7: Membership class, 9 a.m.  
Sunday, Nov. 10: Morning worship, 8:30 and 11 a.m.; church school and adult membership class, 9:45; Senior High MYF, 5 p.m.  
Wednesday, Nov. 13: WSCS luncheon, 1 p.m.; Youth choir, 4:30; Junior high choir, 6:45; Junior high MYF, 7; Chancel choir, 7:30.

**Redeemer Lutheran Church**  
(S. K. de Freese, pastor)  
Saturday, Nov. 9: First year confirmation class, 9:30 a.m.; Junior choir, 10:15; Second and third year confirmation classes, 10:30.  
Sunday, Nov. 10: Early services, 9 a.m.; Adult Bible class and Sunday school, 10; late services, 11; Broadcast RTCH.  
Monday, Nov. 11: Monthly meeting church council, 8 p.m.  
Wednesday, Nov. 13: LCW (brele meetings), 9:15 a.m., 2 p.m. and 8; chancel choir, youth choir, 7.

**Grace Lutheran Church**  
Missouri Synod  
(F. J. Bernthal, pastor)  
Thursday, Nov. 7: "The Seekers" Bible study group, 2 p.m.; Mrs. Otto Saul; Sunday school sub-committee, 7:30 p.m.  
Friday, Nov. 8: Doctrinal information class, 6:30 p.m.  
Saturday, Nov. 9: Junior choir, 9 a.m.; Saturday school and confirmation instruction, 9:30.  
Sunday, Nov. 10: Sunday school and Bible classes, 9 a.m.; worship services, 10; FMV Sunday, Walther League, 7 p.m.  
Monday, Nov. 11: Joint No. 6 & So. Nebraska Board of Directors, Lincoln, 1:30 p.m.  
Tuesday, Nov. 12: District Board of Directors, Omaha, 9 a.m.; LWMI Evening Circle, 8 p.m.  
Wednesday, Nov. 13: Ladies' Aid, 2 p.m.; Senior choir, 8.

**First Church of Christ**  
(Kenneth Locking, pastor)  
Thursday, Nov. 7: King's Daughters meeting, 1:30 p.m.  
Sunday, Nov. 10: Bible school, 10 a.m.; communion and morning worship, 10:50; teachers training class for young adults, 7 p.m.  
Wednesday, Nov. 13: Prayer meeting, 7:30 p.m.

**St. Anselm's Episcopal Church**  
(James M. Barnett, pastor)  
Sunday, Nov. 10: Morning prayer, 10:30 a.m.  
Assembly of God Church  
(Robert McCown, pastor)  
Sunday, Nov. 10: Sunday school, 9:45 a.m.; morning worship, 11; Christ's Ambassadors, 6:45 p.m.; evening service, 7:30.  
Wednesday, Nov. 13: Bible study and prayer service, 7:30 p.m.

**First Trinity Lutheran, Altona**  
(E. A. Binger, pastor)  
Sunday, Nov. 10: Sunday school, 9:15 a.m.; Sunday worship, 10:30.  
Immanuel Lutheran Church  
Missouri Synod  
(A. W. Gode, pastor)  
Saturday, Nov. 9: Saturday school, 9:30 a.m.  
Sunday, Nov. 10: Sunday school, 9:30 a.m.; worship service, 10:30.

**Wesleyan Church**  
(Fred Warrington, pastor)  
Sunday, Nov. 10: Sunday school, 10 a.m.; morning worship, 11; adult study, Wesleyan Youth, children's meeting, 7:30 p.m.; evening service, 8.  
Monday, Nov. 11: Wesleyan Youth district meeting, Venus.

Youth film shown, 8 p.m.  
Tuesday, Nov. 12: WWV prayer, 9:30 a.m.  
Wednesday, Nov. 13: Prayer meeting, 8 p.m.  
Thursday, Nov. 14: WMS, 2 p.m.  
Theophilus Church  
(Fred Warrington, supply)  
Sunday, Nov. 10: Morning worship, 9:30 a.m.; Sunday school, 10:30.

**United Presbyterian Church**  
(C. Paul Russell, pastor)  
Sunday, Nov. 10: Morning worship, 9:45 a.m.; church school, 11; Session meets, 2 p.m.  
Wednesday, Nov. 13: Communion class, 6:30 p.m.; choir, 7.  
Friday, Nov. 15, and Saturday, Nov. 16: 24 hour retreat at Camp Calvin Crest, Fremont.

## Wakefield Hospital

Admitted: Grace Wuerth, Emerson; Olga Walters, Wakefield; Jeannette Wriedt, Wayne; John H. Schroeder, Wakefield; Dean Dahlgren, Wakefield; Selina Rice, Allen; Paul Radtke, Dixon; Elmer C. Wharton, Allen; Ernest Hyspe, Wakefield; Elaine Hansen, Wakefield.  
Dismissed: Jeanette Giese, Wayne; William Meyer, Wakefield; Shirley Sebade, Emerson; Diane Lux, Dixon; Gladys Roberts, Allen; Dean Dahlgren, Wakefield; Paul Radtke, Dixon; Jeannette Wriedt, Wayne.

## Republicans -

(Continued from page 1)  
sent 60,000 hard-core communists into South Vietnam to overthrow the government, kill, poison water and in other ways harass the South Vietnamese. Everyone hopes and prays for peace, but our boys are still fighting a war. Peace must come from the strength of the United States. Our country must stand tall and strong.  
Galbraith introduced Congressman Robert Denney who spoke on the farm program. Denney is a member and vice-chairman of the Task Force on Crime and Violence, and stated, "We have 31 recommended programs to enforce law and order. What this country needs is belief and respect for three things: One, for a Divine Being; two, for our fellow man, providing he shows responsibility and three, for law and order."  
Austin Ring introduced the honored guests, including Senator and Mrs. Elmer Wallwey, Mr. and Mrs. Bob Murphy, Mayor Ed Schnasse, the County Republican officers and precinct chairmen. There were 190 guests attending the banquet.

## Health -

(Continued from page 1)  
next month.  
In other action, the board heard Superintendent Francis Haun's report on his Chicago Seminar Trip.  
-announced that open house at the high school and middle school will be Tuesday, Nov. 19, from 7 to 9 p.m. Open house at Carroll is set for Monday in connection with the Music Boosters. Dates for the elementary school have not been set yet.  
-decided to purchase room divider plastic sheets for the high school commons area from Stephenson of Lincoln for a total of \$236.35.  
-hired Jean Swanson of Wayne as vocational business teacher. She will begin teaching Jan. 2 in place of Jean Lutt. A graduate of Scranton Consolidated High

at Scranton, Ia., she received her BAE in Business Education from Wayne State College.

**Increased Insurance on contents of the buildings and contents in School District 17.** Insurance on the Middle School building remains at \$395,000; insurance on its contents have been increased from \$15,000 to \$39,000. Carroll elementary building insurance remains at \$69,000; contents insurance increased from \$5,000 to \$8,000. West elementary building insurance increased from \$339,000 to \$400,000 and contents increased from \$10,000 to \$35,000. Insurance on the high school building has been increased from \$900,000 to \$945,000 and insurance on the contents increased from \$20,000 to \$75,000.

-approved monthly bills totaling \$13,245.56.  
Iaun showed the board a letter he received from Roy Gray, a member of the State Board of Education who recently visited the Wayne Schools. A consultant for health and physical education, Gray said the Wayne "physical education program is very satisfactory; and as far as I am concerned, it is one of the best in the state. The student receives a well-rounded program."

Gray also said that Wayne should consider becoming a Demonstration Center School. No school in the state has qualified for a Demonstration Center School yet. The board will take this possibility under consideration.

## Police Round-Up

Nov. 2, Wayne police investigated a complaint concerning indecent exposure. They also were asked to check a gun.  
Nov. 2, a 1964 Plymouth was damaged by an unknown vehicle, while parked on West Third Street in the 100 block.  
Nov. 5, police heard complaint of a boy accusing other youths of attempting to run over him with a car.

## Gary Lorenzen

**Slowly Improving**  
The condition of Gary Lorenzen, a patient at Clarkson Memorial Hospital in Omaha, is slowly improving, according to Mrs. Paul Brader.  
He is still under oxygen, Mrs. Brader said, but he has had the mechanical lung and other equipment removed. Two registered nurses still are in attendance.  
Gary is the son of Mr. and Mrs. August Lorenzen, Wayne. He has been hospitalized since Sept. 23 and underwent abdominal surgery Oct. 24.  
A fund has been started to help defray the cost of his treatment. Persons wishing to contribute may send or take money to either of the two banks in Wayne, Mrs. Brader said.

## Inspection -

(Continued from page 1)  
have proper sound and wiring; mirrors must not be cloudy or loose; windshield wipers must be operable and have good blades; glass cannot have cracks, chips or be cloudy; tires, wheels, rims cannot be overworn, cut, bulged, bent or loose; muffler and exhaust systems must not be loose or leak; brakes will be road tested as to pull, noise, grab and stopability; wheels will be pulled off to check brake drums, leaks, lines and contamination; steering, suspension, wheel alignment will be inspected for toe-in, ball joints, shocks, lash and play; all lamps and lighting must be functional with the headlights properly aimed; body and sheet metal on the hood, bumper and fenders will undergo examination; registration of the vehicle must be proper.  
When will it be necessary for your car to be inspected? Passenger cars and motorcycles will be examined in the month deter-

## The Wayne Herald

Serving Northeast Nebraska's Great Farming Area

NATIONAL NEWSPAPER ASSOCIATION

State Award Winner

1967

General Excellence Contest, Nebraska Press Association

114 Main Street Wayne, Nebraska 68787 Phone 375-3600

Established in 1875, a newspaper published semi weekly, Monday and Thursday (except holidays) by J. Alan Cramer, entered in the postoffice at Wayne, Nebraska 68787 2nd class postage paid at Wayne, Nebraska 68787

Hilf Richardson News Editor Jim Marsh Business Manager

Poetry The Wayne Herald does not feature a literary page and does not have a literary editor. Therefore poetry is not accepted for free publication

Official Newspaper of the City of Wayne, the County of Wayne and the State of Nebraska

SUBSCRIPTION RATES

In Wayne Pierce Cedar Dixon Thurston Cumins Stanton and Madison counties \$6.50 per year \$3.00 for six months \$1.25 for three months Outside counties mentioned \$7.50 per year \$4.00 for six months \$4.75 for three months Single copies 10c

mined by the last number of the license plate. For instance if your license plate number was 27-D64 your car would be inspected in the fourth month, or in April. If your plate's last number was 2, then your inspection would be in February, etc.  
Some vehicles, however, must be inspected prior to April 1 each year, and that includes amateur radio operator's cars, pickup trucks, straight trucks, semi-trailers, full trailers, self-propelled mobile homes and some buses. School buses will be exempt in that they are inspected by the Nebraska Highway Patrol on a regular basis.  
Inspections for the following years will be indicated by the expiration date shown on the 1969 sticker.  
Trailers less than 500 pounds, antique plated vehicles, school buses and husbandry registered vehicles are exempt. Parochial school buses will have undergone inspection.  
Other area meetings on the new inspection law are being held at Omaha, Lincoln, Grand Island, Scottsbluff and North Platte.

**Scholarship to Neleigh Graduate**  
Carol M. Wilson of Neleigh has received the Victor Morey Memorial Scholarship for study at Wayne State College. A sophomore majoring in business, she is a member of Alpha Lambda Delta, national honorary sorority for freshmen women. Daughter of Mr. and Mrs. Don Wilson, she was salutatorian of her Neleigh High School graduating class in 1967.

**Dr. Gordon Shupe**  
Inducted into ACD  
Doctor Gordon W. Shupe of Wayne was one of over 200 new Fellows inducted into the American College of Dentists at ceremonies held Oct. 27 in Miami Beach, Fla. He was one of three

## FEEL GOOD IN Jockey UNDERWEAR

Short Contoured Shirt Longs Midway

We feature JOCKEY Underwear because it's worn and approved by millions of men. All lowers feature the patented Y-front construction "the source of support." We have shirts to match. — Come in and replenish your underwear today.

WE ALSO HAVE THE WARM ONE-PIECE HIVE SUITS

Swan-McLean clothing for men and young men WAYNE, NEB.

YOUR PHARMACY

Griess Rexall Store 221 Main Ph. 375-2722

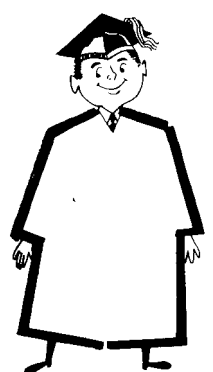
## Wear Supp-hose Supreme Sheer. Put on a happy face.



# Swan's

Apparel for Women

## A Busy Time for You ...



and Us ...

SENIOR PORTRAITS

# Lyman Photography

Phone 375-1140

PHONE 375-1280 FREE PILLS TO THE GIRLS -

20th Century-Fox presents

DEBORAH KERR DAVID NIVEN

Prudence and the Pill

MATINEES ONLY! SATURDAY and SUNDAY!

Imagination's Tiny-est Hero... in a GIANT of an Adventure!

CHILDHOOD PRODUCTIONS Present

TOM THUMB

Starts FRIDAY DUDE RANCH

OPEN 7 P.M. - STARTS 7:15 P.M.

COLUMBIA PICTURES Present

GEORGY GIRL

LYNN REDGRAVE

Starts THURSDAY

HAWLEY / DEAN HARRIS

"A MATTER OF INNOCENCE"

A UNIVERSAL RELEASE IN TECHNOLOGY

# Wildcat 4-4 Record Doesn't Tell Whole Story — Jermier

Football for 1969 at Wayne State is history now, and though not the best in Wildcat grid history, the 4-4 record did credit to a young team, Coach John Jermier believes.

His Wildcats ended their season Saturday afternoon with a 27-12 loss to St. Cloud State of Minnesota at St. Cloud. They were not humiliated by the Huskie team, which had more experience, size and depth—9,000 students to draw from.

Jermier notes that the Wildcats were not humiliated by any team, except possibly Chadron State, which caught Wayne at its season low, with numerous injuries to key players. After that low point, Wayne secured Kearney, the eventual conference champion, with a furious attack that had the Antelope trailing most of the game.

At St. Cloud, Sam Singleton marked up his finest effort of a frustrating season that began with a first-game injury and kept him below par for weeks. When the smoke cleared, St. Cloud observers commented that Sam looked with the best opponents the Huskies had faced.

Singleton rushed for 95 yards on 23 carries, and passed for 94 yards, completing six of eight. Most of that yardage came late in the fourth quarter when Wayne, trailing 27-6, shifted to the shotgun offense with Singleton carrying 10 times and throwing seven times.

The drive from Wayne's 23 was interrupted once when a clipping penalty frustrated a first-down. But defensive halfback Pat Holston, a teammate of Singleton's at Thomas Jefferson High School in Elizabeth, put the Wayne attack back in action with an interception.

Finally, Singleton skirted right end four yards for a touchdown—his first of the season. The try for point, a fake placekick, fell short on Marty Goling's run.

St. Cloud scored on its first play with a 58-yard pass from Greg Thayer to Walt Rhodes. The shocker caught Wayne's defense in tight expecting a ground play. The rest of the first half was a bruising defensive battle until St. Cloud's interception put the Huskies on the Wayne 34. Ten plays took St. Cloud to the goal line with Gary Hahn slaming the last two yards. Andy Klason's kick put the Huskies ahead, 13-0 with 31 seconds left.

Wayne made good use of half-time and in less than five minutes of the third quarter the Wildcats stormed through a 68-yard drive to a touchdown in less than five minutes of the third quarter. A key play was Singleton's 38-yard pass to split end Greg Walker from the Huskie six. From there fullback John Perkins bucked three yards, then quarterback Chuck Tricker planned the final three. St. Cloud blocked Don Grubaugh's kick for point.

The Huskies responded with a touchdown drive capped by a Thayer-Rhodes pass for 25 yards and Klason's point kick, making the score 20-6.

Early in the fourth quarter St. Cloud scored again on a Mike Jahn drive of one yard and an-

other Klason kick. After a fumble series by each team, Wayne went into the shotgun for the first time this year—with time enough left to score but not to win.

Wayne	St. Cloud	
First downs	18	21
Rushing yards	124	189

Passing yards	140	171
Return yards	100	85
Passes	13-25-3	12-21-2
Punts and aver.	7-35	8-30
Fumbles lost	1	0
Penalty yards	46	25

Wayne	0	6	6	—12
St. Cloud	6	7	7	—27

## Area Gridders Go Into Final Week of Action

High school football fans in the area have one more Friday night of action ahead of them. Then it's a slight pause, a re-focusing and right back into the thick of it as basketball competition gets underway.

The Wayne Blue Devils, knocked out of any chance for conference championship honors by losing to Laurel Friday night, travel to Pierce. Pierce still has hopes of finishing the season as western division conference champs—they could do it by sending the Blue Devils home with a defeat. That would give them a season conference record of six wins and one loss—the same as Laurel. Since Pierce clipped the Bears earlier in the season, the honor would be theirs. A Wayne victory Friday night would give Laurel the conference honors and qualify them for a playoff game with Scribner for the Husker Conference title.

Here could prove to be the dark horse in the conference this year and surprise Wayne. Although suffering two defeats so far (Crofton 0-7 and Madison 12-26), Pierce has been gaining momentum as the season has progressed.

They've scored decisive victories in their last three games, knocking off Stanton 32-18, O'Neill 38-21 and Plainville 26-6. They should be up for their season finale—it's do or die for

them. Winside will end their season Thursday night by traveling to Norfolk for a Lewis and Clark Conference clash with Norfolk Catholic High School. Unable to get many conference games this year, Norfolk CHS has a conference record of one win and one loss. They lost to Emerson-Hubbard 19-0, and defeated Hartington Cedar Catholic 12-6. Their season record is three wins and five defeats.

Winside stands three-three-one for the season and two-three-one for the conference. The Allen Eagles have no chance to take first place in the Lewis and Clark Conference, but they could play the role of spoiler Friday night and move from third place to second place by knocking off highly-ranked Emerson-Hubbard.

Emerson-Hubbard, now in second place behind Handolph, has a season record of seven wins and one loss and a conference record of five wins and one loss. Handolph clipped Emerson-Hubbard 27-13 Friday night.

Wayfield hosts Lyons for their season finale Friday night. The Trojans can only hope to improve on what will be a losing year. They have suffered seven defeats so far this year while tallying two wins. They knocked off Ponca 25-0 and Oakland 33-14.

## Grid Standings



### Husker Conference—West

Laurel (7-1)	W	L	T
Wayne (7-1)	5	1	
Pierce (6-2)	5	1	
Madison (6-2)	4	2	
Neligh (3-5)	2	4	
Stanton (2-6)	2	4	
Plainville (0-7-1)	0	5	1
Bloomfield (1-6-1)	0	5	1

### Lewis & Clark Conference

Handolph (8-0)	7	0
Em-Hub (7-1)	4	1
Allen (5-2)	4	2
Coleridge (4-5)	4	4
Hart. C. (2-5-1)	1	1
Norfolk CHS (3-5-1)	1	1
Winside (3-3-1)	2	3
Hartington (2-6)	2	4
Wymot (0-7)	0	3
Ponca (0-6-2)	0	5

### Nebr. College Conference (Final Standings)

Kearney (5-2)	4	0
Chadron (7-1)	3	1
Wayne (4-4)	2	2
Hastings (2-6)	1	3
Peru (2-6)	0	4

Games Thursday night: Winside at Norfolk Catholic High School.  
Games Friday night: Wayne at Pierce; Allen at Emerson-Hubbard; O'Neill at Laurel; Lyons at Wakefield.

## Scribner Bombs Wakefield 54-12 In Friday Contest

Leland Miner and Bob Gustafson were the only Wakefield Trojans to cross the goal line in Friday's game at Scribner. The Trojans brought home a 54-12 defeat to make their season record two wins and seven defeats. They have one more chance to improve on that record—they host Lyons Friday night for their last season game.

Scribner's Mark Stell started off the scoring spree for the hosts when he caught a pass from Robert Meyer for an 80 yard touchdown. Scribner's Floyd Everett plunged over from four yards out in the second quarter and Ron Cerney crossed the goal on a one-yard run. Wakefield's lone first-half touchdown came on a pass from Quarterback Gary Preston to Leland Miner which covered 13 yards.

In the third quarter Scribner increased their 20-6 halftime lead on three more touchdowns. The scores came on a 66 yard run by Jim Zahourek, a 31 yard pass from Robert Meyer to Mark Stell and an 80 yard run by Ron Cerney.

Scribner added two more touchdowns in the last quarter, coming on a 17 yard pass play from Delbert Kruger to Kirk Muller and a one yard plunge by Floyd Everett.

Wakefield's last score in the game was made by Bob Gustafson from one yard out.

Leading rushers for Wakefield were Leland Miner with 40 yards in four carries, Robby Faton with 32 yards in seven carries and Bob Gustafson with 38 yards

### 14 carries.

Wake	Scrib	
First downs	13	10
Yards rushing	133	293
Yards passing	130	211
Passes/completed	23/5	23/9
Intercepted by	2	8
Punts/average	3/30	1/45
Fumbles/lost	3/2	1/0
Penalties	5	20

## Sunrise-Sunset

The schedule gives the sunrise-sunset schedule for Norfolk and any point due north or south. For each 13 miles west of Norfolk add one minute and for each 13 miles east subtract one minute.

Nov. 10	7:13	5:14
Nov. 11	7:14	5:13
Nov. 12	7:16	5:12
Nov. 13	7:17	5:11
Nov. 14	7:18	5:10
Nov. 15	7:19	5:09
Nov. 16	7:20	5:08

## 185 Deer Taken By Bow Hunters

Since the bow and arrow season opened Oct. 30, a total of 185 archers have scored deer kills in Nebraska. Several of the bow hunters are from Northeast Nebraska. Bringing down their venison were Richard Signor and LeVerne Hurman, both of Norfolk; Orvall Kuester, Stanton; James Frohaska, Creighton; Albert Saltgiver, Dakota City; Verlin Camlin, West Point; and Donald Paston, South Sioux City.

Bow and arrow hunters have to leave the fields briefly during the firearm deer seasons, which are Nov. 2 through 10 in the Blue and Nemah units, and Nov. 9 through 17 in the remainder of the state.

## Basketball Coaching Clinic Set Saturday

The second annual basketball coaching clinic to be held at Briar Cliff College, Sioux City, has been set for Saturday by head basketball coach William F. Stier, Jr. The clinic which will be held on campus is open to all basketball coaches in the area.

Guest speaker will be the head basketball coach of the University of New Mexico, Bob King. During the 9:30 a.m. session he will discuss "defense for consistency" and at the 2:30 p.m. program he will stress the "inside offensive game for consistency."

Members of the Briar Cliff Chargers varsity team will be on hand to translate theory into actual play situations.

Lunch will be available in the college cafeteria, at which time the Sioux City media sports directors will also meet.

## Gavins Point Yields 25-Pound Sturgeon

Delbert Henn of Petersburg recently had the rare luck to land one of the most unusual fish in Nebraska when he pulled a 25-pound lake sturgeon from the tailwaters at Gavins Point Dam. The fish measured 5 1/2 inches in length and was taken on a worm.

Shovelnose sturgeon (or sand sturgeon) are fairly common in the Missouri and Platte Rivers but seldom exceed four pounds. A close relative, the pallid sturgeon, is rare in Nebraska waters and reaches weights of over 40 pounds. Even more rare is the lake sturgeon, which may grow to 200 pounds and eight feet in

## Local Hunters Get Pine Ridge Turkeys

Turkeys became legal game Saturday across much of northern Nebraska and local hunters participating scored well.

Hunting out of Fort Robinson near Crawford in the Pine Ridge area, Troy Vaught, Bill Richardson and Roy Christensen, all Wayne hunters, scored. Don Wittig, Broken Bow, and Charles Carhart, Neligh, both former Wayne residents, hunted in the area and were successful.

Christensen's 18-pound gobler sported a beard of more than 11 inches, the longest ever measured at Crawford, according to state game technicians at the check station.

With only 500 permits in the Pine Ridge area this year as compared to 1,500 last year, game commission officials were hoping for a 75 per cent success figure, but by Sunday night they were revising their forecasts downward to about 50 or 60 per cent.



JR HIGH REC LEAGUE. Hank Overin's Junior High team almost ended the season with a perfect record — they got clipped by Walthill 13-0 Monday in the last game of the year. Their season record is four wins and one defeat.

## Walthill Downs Junior High 11; Squad's First Loss

The Junior High football squad suffered its first defeat Monday when it took on the Walthill freshmen and sophomores. The hosts proved too big and finally wore down visiting Wayne in the last quarter when they scored two touchdowns within the closing three minutes of the game to end up on top 13-0.

Wayne had a chance to score early in the game when they drove all the way to Walthill's 10 yard line only to see their pass dropped in the endzone.

Hank Overin cited Doug Sturm as outstanding on offense. He made runs of 30 and 40 yards and took a punt all the way from his own 20 to Walthill's 20 before being dragged down. Strong on both offense and defense was Randy Nelson. Overin also noted that the entire defensive line played well in the futile effort, forcing the hosts to go to the air for their touchdowns.

The Junior High team ends the season with four wins and one loss. They knocked off Laurel (12-9), Wayne Freshman (26-0), Pierce (9-7) and Norfolk Catholic (26-0). Overin pointed out that only once in the past five years has the Junior High team been beaten by another Junior High team. All their defeats have been at the hands of freshmen-sophomore teams.

An intersquad game will be played Tuesday at 7:30 if the weather permits. The first 12 players on the squad will not be eligible for the game.

## Johnson - Hix Win In Junior Kegling

The duo of Johnson and Hix won Saturday's Junior Bowling League contest with a series of 489. Koeber and Kardell took second with a 446 series.

High bowler in the day's competition was Steve Johnson with a 155. Taking second high was Virgil Kardell with a 133.

The Junior Bowling League meets every Saturday afternoon at 1:15.

## Big-Game Hunters Must Check Kills

All successful big-game hunters in Nebraska this year are required to take their animals to a check station to have them checked and officially sealed, reminds the Game Commission.

Compulsory check stations were instituted again this season after being dropped for one year. Not only do the stations serve to control illegal kills, but they also furnish technicians with much valuable management information.

Such things as age, sex, location of kills, and other data enable game managers to set regulations which offer the optimum opportunity for sportsmen while maintaining proper game populations.

Hunters receive a list of check stations for their management unit. Deer may be checked in at stations in the unit hunted or in the next adjacent unit in line with their direct travel home. Turkeys must be sealed at a station within the unit taken.

## Johnson - Hix Win In Junior Kegling

The duo of Johnson and Hix won Saturday's Junior Bowling League contest with a series of 489. Koeber and Kardell took second with a 446 series.

High bowler in the day's competition was Steve Johnson with a 155. Taking second high was Virgil Kardell with a 133.

The Junior Bowling League meets every Saturday afternoon at 1:15.

## Big-Game Hunters Must Check Kills

All successful big-game hunters in Nebraska this year are required to take their animals to a check station to have them checked and officially sealed, reminds the Game Commission.

Compulsory check stations were instituted again this season after being dropped for one year. Not only do the stations serve to control illegal kills, but they also furnish technicians with much valuable management information.

Such things as age, sex, location of kills, and other data enable game managers to set regulations which offer the optimum opportunity for sportsmen while maintaining proper game populations.

Hunters receive a list of check stations for their management unit. Deer may be checked in at stations in the unit hunted or in the next adjacent unit in line with their direct travel home. Turkeys must be sealed at a station within the unit taken.

# BOWLING at Melodee Lanes

1221 Lincoln Phone 375-3390

<h3>Wayne Farm Equipment</h3> <p>Alfalis-Chalmers — Dual — New Idea and Hesston</p> <h3>Feeders Elevator, Inc.</h3> <p>410 Fairgrounds Avenue Phone 375-3013</p> <p>Stop in after the Game for a NIGHTCAP at LES' Steak House</p> <h3>Dahl Retirement Center</h3> <p>918 Main Street Phone 375-1922</p> <h3>First National Bank</h3> <p>301 Main Phone 375-2525</p>	<table border="1"> <tr> <th>City League - Kenneth Spitzberger, sec.</th> <th>W</th> <th>L</th> <th>T</th> </tr> <tr><td>Property Exchange</td><td>26</td><td>13</td><td></td></tr> <tr><td>Wayne's Body Shop</td><td>23</td><td>13</td><td></td></tr> <tr><td>J Huang's</td><td>22</td><td>14</td><td></td></tr> <tr><td>Wayne Greenhouse</td><td>22</td><td>14</td><td></td></tr> <tr><td>Sweet Lass</td><td>20</td><td>18</td><td></td></tr> <tr><td>CWA</td><td>18</td><td>18</td><td></td></tr> <tr><td>Wolke Auto</td><td>16 1/2</td><td>19 1/2</td><td></td></tr> <tr><td>Frederickson's</td><td>15</td><td>21</td><td></td></tr> <tr><td>RTCH</td><td>15</td><td>21</td><td></td></tr> <tr><td>Dick's Tavern</td><td>14 1/2</td><td>21 1/2</td><td></td></tr> <tr><td>Waltman Hardware</td><td>14</td><td>21 1/2</td><td></td></tr> <tr><td>Olson Feed Store</td><td>14</td><td>21 1/2</td><td></td></tr> <tr><td>High scores: John Luschen 219; Merland Lessman 596; Wayne's Body Shop 992; Wolke Auto 2327.</td><td></td><td></td><td></td></tr> </table> <table border="1"> <tr> <th>Friday Night Couples - Lola Dech, sec.</th> <th>W</th> <th>L</th> <th>T</th> </tr> <tr><td>Thompson-Wetlie</td><td>29</td><td>7</td><td></td></tr> <tr><td>Lauschen-Whitney</td><td>25</td><td>11</td><td></td></tr> <tr><td>Jech-Bauer</td><td>23 1/2</td><td>13 1/2</td><td></td></tr> <tr><td>Carman-Hedrick</td><td>18 1/2</td><td>17 1/2</td><td></td></tr> <tr><td>Mayer-Nelson</td><td>18 1/2</td><td>17 1/2</td><td></td></tr> <tr><td>Hahn-Dehendorf</td><td>17</td><td>18</td><td></td></tr> <tr><td>Bull-Dier-Hanks</td><td>16</td><td>20</td><td></td></tr> <tr><td>Roeber-Baler</td><td>16</td><td>20</td><td></td></tr> <tr><td>Wood-Frstrom</td><td>14 1/2</td><td>21 1/2</td><td></td></tr> <tr><td>Shaw-Donecher</td><td>14</td><td>22</td><td></td></tr> <tr><td>Thompson-Preston</td><td>13</td><td>23</td><td></td></tr> <tr><td>Bahn-Brasch</td><td>11</td><td>25</td><td></td></tr> <tr><td>High scores: Ruth Woods 214; Maroloe Rabe 192 and 488; Merle Whitney 582; Thompson-Wetlie 703; Lauschen-Whitney 2011.</td><td></td><td></td><td></td></tr> </table> <table border="1"> <tr> <th>High'n Mises - Lola Netherland, sec.</th> <th>W</th> <th>L</th> <th>T</th> </tr> <tr><td>Biff's Cafe</td><td>25</td><td>15</td><td></td></tr> <tr><td>Wagon Wheel Cafe</td><td>25</td><td>15</td><td></td></tr> <tr><td>Wayne Greenhouse</td><td>23</td><td>17</td><td></td></tr> <tr><td>Garhart's</td><td>23</td><td>17</td><td></td></tr> <tr><td>L &amp; M Cafe</td><td>21</td><td>19</td><td></td></tr> <tr><td>Swan's</td><td>20</td><td>20</td><td></td></tr> <tr><td>Pioneer</td><td>20</td><td>20</td><td></td></tr> <tr><td>LJH Dealer</td><td>20</td><td>20</td><td></td></tr> <tr><td>Squirt</td><td>18</td><td>22</td><td></td></tr> <tr><td>Coca-Cola</td><td>17</td><td>23</td><td></td></tr> <tr><td>M &amp; S</td><td>14</td><td>26</td><td></td></tr> <tr><td>King's Carpets</td><td>14</td><td>26</td><td></td></tr> <tr><td>High scores: Ruth Rose 190; Marion Evans 503; Coca-Cola 804 and 2237.</td><td></td><td></td><td></td></tr> </table> <table border="1"> <tr> <th>Monday Nite Ladies - Helen Wetlie, sec.</th> <th>W</th> <th>L</th> <th>T</th> </tr> <tr><td>El Rancho</td><td>26</td><td>10</td><td></td></tr> <tr><td>Harvale Farms</td><td>25</td><td>11</td><td></td></tr> <tr><td>Gillette's Dairy</td><td>22</td><td>14</td><td></td></tr> <tr><td>N &amp; M Oil Co.</td><td>22</td><td>14</td><td></td></tr> <tr><td>No Tavern</td><td>20</td><td>16</td><td></td></tr> <tr><td>Love's Signs</td><td>18</td><td>18</td><td></td></tr> <tr><td>Rogler Electric</td><td>17</td><td>19</td><td></td></tr> <tr><td>Schmidt-Grable</td><td>16</td><td>20</td><td></td></tr> <tr><td>Say Drug</td><td>15</td><td>21</td><td></td></tr> <tr><td>State National Bank</td><td>14</td><td>22</td><td></td></tr> <tr><td>Dahl's Retirement Center</td><td>14</td><td>22</td><td></td></tr> <tr><td>Wayne Cold Storage Co.</td><td>7</td><td>29</td><td></td></tr> <tr><td>High scores: Verne Bruechner 190; Eleanor Peterson 505; El Rancho 816 and 2267.</td><td></td><td></td><td></td></tr> </table> <table border="1"> <tr> <th>Friday Nite Ladies - Darlene Helgen, sec.</th> <th>W</th> <th>L</th> <th>T</th> </tr> <tr><td>Blake's</td><td>25</td><td>11</td><td></td></tr> <tr><td>Lyman's</td><td>21</td><td>15</td><td></td></tr> <tr><td>Amie's</td><td>20</td><td>16</td><td></td></tr> <tr><td>Marty's</td><td>20</td><td>16</td><td></td></tr> <tr><td>Strader-Allen</td><td>19</td><td>17</td><td></td></tr> <tr><td>People's</td><td>18</td><td>18</td><td></td></tr> <tr><td>Biff's Market</td><td>11</td><td>23</td><td></td></tr> <tr><td>Larson's</td><td>10</td><td>26</td><td></td></tr> <tr><td>High scores: Delores Schulz 193 and 496; Strader-Allen 646 and 1654.</td><td></td><td></td><td></td></tr> </table> <table border="1"> <tr> <th>Go Go Ladies - Marian Tikez, sec.</th> <th>W</th> <th>L</th> <th>T</th> </tr> <tr><td>Gutter Dusters</td><td>22 1/2</td><td>9 1/2</td><td></td></tr> <tr><td>Lucky Four</td><td>20 1/2</td><td>11 1/2</td><td></td></tr> <tr><td>Lucky Strikers</td><td>19 1/2</td><td>12 1/2</td><td></td></tr> <tr><td>Jolly Four</td><td>17 1/2</td><td>14 1/2</td><td></td></tr> <tr><td>People's</td><td>15</td><td>16</td><td></td></tr> <tr><td>Bowling Belles</td><td>14</td><td>18</td><td></td></tr> <tr><td>Alley Kats</td><td>12</td><td>20</td><td></td></tr> <tr><td>Four Winds</td><td>6</td><td>24</td><td></td></tr> <tr><td>High scores: Francis Nichols 167; Helen Hupp 430; White-Aways 522 and 1522.</td><td></td><td></td><td></td></tr> </table> <table border="1"> <tr> <th>Saturday Nite Couples - Elaine Phelan, sec.</th> <th>W</th> <th>L</th> <th>T</th> </tr> <tr><td>Dahl-Burt</td><td>27</td><td>13</td><td></td></tr> <tr><td>Olson-John-Lacina</td><td>26</td><td>14</td><td></td></tr> <tr><td>Dech-Mahn</td><td>26</td><td>14</td><td></td></tr> <tr><td>Vogel-Ann-Trostman</td><td>25</td><td>15</td><td></td></tr> <tr><td>Phelan-McGowan</td><td>25</td><td>15</td><td></td></tr> <tr><td>Wagner-Fry</td><td>23</td><td>17</td><td></td></tr> <tr><td>Daugherty-Branger</td><td>23</td><td>17</td><td></td></tr> <tr><td>Latt-Happ</td><td>22</td><td>18</td><td></td></tr> <tr><td>Milo-Nelson</td><td>21</td><td>19</td><td></td></tr> <tr><td>Schmidt-Jane</td><td>21</td><td>19</td><td></td></tr> <tr><td>Sollen-Krueger</td><td>20</td><td>20</td><td></td></tr> <tr><td>Wagner-Nicholson</td><td>18</td><td>22</td><td></td></tr> <tr><td>Jackie-Winters</td><td>17</td><td>23</td><td></td></tr> <tr><td>Hansen-Mann</td><td>17</td><td>23</td><td></td></tr> <tr><td>Johnson-Jankle</td><td>16</td><td>24</td><td></td></tr> <tr><td>St-Monkamp-Freyer</td><td>12</td><td>28</td><td></td></tr> <tr><td>Dangberg-Preston</td><td>11</td><td>29</td><td></td></tr> <tr><td>Dunkan-Jankle</td><td>10</td><td>30</td><td></td></tr> <tr><td>High scores: Emma Willers 187; Wilma Deek 202 and 544; Joan Hansen 482; Daugherty-Branger 652; Vogel-Ann-Trostman 1946.</td><td></td><td></td><td></td></tr> </table> <table border="1"> <tr> <th>Church - Herb Hansen, sec.</th> <th>W</th> <th>L</th> <th>T</th> </tr> <tr><td>Concordia No. 1</td><td>27</td><td>13</td><td></td></tr> <tr><td>Walter's</td><td>26 1/2</td><td>13 1/2</td><td></td></tr> <tr><td>Wayne St. Paul</td><td>22</td><td>18</td><td></td></tr> <tr><td>Grace Lutheran</td><td>22</td><td>18</td><td></td></tr> <tr><td>Methodist</td><td>20</td><td>20</td><td></td></tr> <tr><td>Concordia No. 2</td><td>19</td><td>21</td><td></td></tr> <tr><td>Concordia No. 3</td><td>17</td><td>23</td><td></td></tr> <tr><td>Wardle St. Paul</td><td>17</td><td>23</td><td></td></tr> <tr><td>Super Vale</td><td>15</td><td>25</td><td></td></tr> <tr><td>Carhart's</td><td>13</td><td>27</td><td></td></tr> <tr><td>Immanuel</td><td>14 1/2</td><td>25 1/2</td><td></td></tr> <tr><td>High scores: Glenn Walker 238; Marian Johnson 551; Redeemers 864 and 2497.</td><td></td><td></td><td></td></tr> </table> <table border="1"> <tr> <th>Community League - Harold Murray, sec.</th> <th>W</th> <th>L</th> <th>T</th> </tr> <tr><td>Bahveener</td><td>25</td><td>11</td><td></td></tr> <tr><td>Sherry's Farm Service</td><td>24</td><td>12</td><td></td></tr> <tr><td>Jan Franklin</td><td>20</td><td>16</td><td></td></tr> <tr><td>V &amp; L Bar</td><td>20</td><td>16</td><td></td></tr> <tr><td>Langemier</td><td>19</td><td>17</td><td></td></tr> <tr><td>Super Vale</td><td>15</td><td>25</td><td></td></tr> <tr><td>Carhart's</td><td>13</td><td>27</td><td></td></tr> <tr><td>Melodee Cleaners</td><td>9</td><td>27</td><td></td></tr> <tr><td>High scores: Dale Thompson 228 and 563; Super Vale 82</td></tr></table>	City League - Kenneth Spitzberger, sec.	W	L	T	Property Exchange	26	13		Wayne's Body Shop	23	13		J Huang's	22	14		Wayne Greenhouse	22	14		Sweet Lass	20	18		CWA	18	18		Wolke Auto	16 1/2	19 1/2		Frederickson's	15	21		RTCH	15	21		Dick's Tavern	14 1/2	21 1/2		Waltman Hardware	14	21 1/2		Olson Feed Store	14	21 1/2		High scores: John Luschen 219; Merland Lessman 596; Wayne's Body Shop 992; Wolke Auto 2327.				Friday Night Couples - Lola Dech, sec.	W	L	T	Thompson-Wetlie	29	7		Lauschen-Whitney	25	11		Jech-Bauer	23 1/2	13 1/2		Carman-Hedrick	18 1/2	17 1/2		Mayer-Nelson	18 1/2	17 1/2		Hahn-Dehendorf	17	18		Bull-Dier-Hanks	16	20		Roeber-Baler	16	20		Wood-Frstrom	14 1/2	21 1/2		Shaw-Donecher	14	22		Thompson-Preston	13	23		Bahn-Brasch	11	25		High scores: Ruth Woods 214; Maroloe Rabe 192 and 488; Merle Whitney 582; Thompson-Wetlie 703; Lauschen-Whitney 2011.				High'n Mises - Lola Netherland, sec.	W	L	T	Biff's Cafe	25	15		Wagon Wheel Cafe	25	15		Wayne Greenhouse	23	17		Garhart's	23	17		L & M Cafe	21	19		Swan's	20	20		Pioneer	20	20		LJH Dealer	20	20		Squirt	18	22		Coca-Cola	17	23		M & S	14	26		King's Carpets	14	26		High scores: Ruth Rose 190; Marion Evans 503; Coca-Cola 804 and 2237.				Monday Nite Ladies - Helen Wetlie, sec.	W	L	T	El Rancho	26	10		Harvale Farms	25	11		Gillette's Dairy	22	14		N & M Oil Co.	22	14		No Tavern	20	16		Love's Signs	18	18		Rogler Electric	17	19		Schmidt-Grable	16	20		Say Drug	15	21		State National Bank	14	22		Dahl's Retirement Center	14	22		Wayne Cold Storage Co.	7	29		High scores: Verne Bruechner 190; Eleanor Peterson 505; El Rancho 816 and 2267.				Friday Nite Ladies - Darlene Helgen, sec.	W	L	T	Blake's	25	11		Lyman's	21	15		Amie's	20	16		Marty's	20	16		Strader-Allen	19	17		People's	18	18		Biff's Market	11	23		Larson's	10	26		High scores: Delores Schulz 193 and 496; Strader-Allen 646 and 1654.				Go Go Ladies - Marian Tikez, sec.	W	L	T	Gutter Dusters	22 1/2	9 1/2		Lucky Four	20 1/2	11 1/2		Lucky Strikers	19 1/2	12 1/2		Jolly Four	17 1/2	14 1/2		People's	15	16		Bowling Belles	14	18		Alley Kats	12	20		Four Winds	6	24		High scores: Francis Nichols 167; Helen Hupp 430; White-Aways 522 and 1522.				Saturday Nite Couples - Elaine Phelan, sec.	W	L	T	Dahl-Burt	27	13		Olson-John-Lacina	26	14		Dech-Mahn	26	14		Vogel-Ann-Trostman	25	15		Phelan-McGowan	25	15		Wagner-Fry	23	17		Daugherty-Branger	23	17		Latt-Happ	22	18		Milo-Nelson	21	19		Schmidt-Jane	21	19		Sollen-Krueger	20	20		Wagner-Nicholson	18	22		Jackie-Winters	17	23		Hansen-Mann	17	23		Johnson-Jankle	16	24		St-Monkamp-Freyer	12	28		Dangberg-Preston	11	29		Dunkan-Jankle	10	30		High scores: Emma Willers 187; Wilma Deek 202 and 544; Joan Hansen 482; Daugherty-Branger 652; Vogel-Ann-Trostman 1946.				Church - Herb Hansen, sec.	W	L	T	Concordia No. 1	27	13		Walter's	26 1/2	13 1/2		Wayne St. Paul	22	18		Grace Lutheran	22	18		Methodist	20	20		Concordia No. 2	19	21		Concordia No. 3	17	23		Wardle St. Paul	17	23		Super Vale	15	25		Carhart's	13	27		Immanuel	14 1/2	25 1/2		High scores: Glenn Walker 238; Marian Johnson 551; Redeemers 864 and 2497.				Community League - Harold Murray, sec.	W	L	T	Bahveener	25	11		Sherry's Farm Service	24	12		Jan Franklin	20	16		V & L Bar	20	16		Langemier	19	17		Super Vale	15	25		Carhart's	13	27		Melodee Cleaners	9	27		High scores: Dale Thompson 228 and 563; Super Vale 82
City League - Kenneth Spitzberger, sec.	W	L	T																																																																																																																																																																																																																																																																																																																																																																																																																																																																																							
Property Exchange	26	13																																																																																																																																																																																																																																																																																																																																																																																																																																																																																								
Wayne's Body Shop	23	13																																																																																																																																																																																																																																																																																																																																																																																																																																																																																								
J Huang's	22	14																																																																																																																																																																																																																																																																																																																																																																																																																																																																																								
Wayne Greenhouse	22	14																																																																																																																																																																																																																																																																																																																																																																																																																																																																																								
Sweet Lass	20	18																																																																																																																																																																																																																																																																																																																																																																																																																																																																																								
CWA	18	18																																																																																																																																																																																																																																																																																																																																																																																																																																																																																								
Wolke Auto	16 1/2	19 1/2																																																																																																																																																																																																																																																																																																																																																																																																																																																																																								
Frederickson's	15	21																																																																																																																																																																																																																																																																																																																																																																																																																																																																																								
RTCH	15	21																																																																																																																																																																																																																																																																																																																																																																																																																																																																																								
Dick's Tavern	14 1/2	21 1/2																																																																																																																																																																																																																																																																																																																																																																																																																																																																																								
Waltman Hardware	14	21 1/2																																																																																																																																																																																																																																																																																																																																																																																																																																																																																								
Olson Feed Store	14	21 1/2																																																																																																																																																																																																																																																																																																																																																																																																																																																																																								
High scores: John Luschen 219; Merland Lessman 596; Wayne's Body Shop 992; Wolke Auto 2327.																																																																																																																																																																																																																																																																																																																																																																																																																																																																																										
Friday Night Couples - Lola Dech, sec.	W	L	T																																																																																																																																																																																																																																																																																																																																																																																																																																																																																							
Thompson-Wetlie	29	7																																																																																																																																																																																																																																																																																																																																																																																																																																																																																								
Lauschen-Whitney	25	11																																																																																																																																																																																																																																																																																																																																																																																																																																																																																								
Jech-Bauer	23 1/2	13 1/2																																																																																																																																																																																																																																																																																																																																																																																																																																																																																								
Carman-Hedrick	18 1/2	17 1/2																																																																																																																																																																																																																																																																																																																																																																																																																																																																																								
Mayer-Nelson	18 1/2	17 1/2																																																																																																																																																																																																																																																																																																																																																																																																																																																																																								
Hahn-Dehendorf	17	18																																																																																																																																																																																																																																																																																																																																																																																																																																																																																								
Bull-Dier-Hanks	16	20																																																																																																																																																																																																																																																																																																																																																																																																																																																																																								
Roeber-Baler	16	20																																																																																																																																																																																																																																																																																																																																																																																																																																																																																								
Wood-Frstrom	14 1/2	21 1/2																																																																																																																																																																																																																																																																																																																																																																																																																																																																																								
Shaw-Donecher	14	22																																																																																																																																																																																																																																																																																																																																																																																																																																																																																								
Thompson-Preston	13	23																																																																																																																																																																																																																																																																																																																																																																																																																																																																																								
Bahn-Brasch	11	25																																																																																																																																																																																																																																																																																																																																																																																																																																																																																								
High scores: Ruth Woods 214; Maroloe Rabe 192 and 488; Merle Whitney 582; Thompson-Wetlie 703; Lauschen-Whitney 2011.																																																																																																																																																																																																																																																																																																																																																																																																																																																																																										
High'n Mises - Lola Netherland, sec.	W	L	T																																																																																																																																																																																																																																																																																																																																																																																																																																																																																							
Biff's Cafe	25	15																																																																																																																																																																																																																																																																																																																																																																																																																																																																																								
Wagon Wheel Cafe	25	15																																																																																																																																																																																																																																																																																																																																																																																																																																																																																								
Wayne Greenhouse	23	17																																																																																																																																																																																																																																																																																																																																																																																																																																																																																								
Garhart's	23	17																																																																																																																																																																																																																																																																																																																																																																																																																																																																																								
L & M Cafe	21	19																																																																																																																																																																																																																																																																																																																																																																																																																																																																																								
Swan's	20	20																																																																																																																																																																																																																																																																																																																																																																																																																																																																																								
Pioneer	20	20																																																																																																																																																																																																																																																																																																																																																																																																																																																																																								
LJH Dealer	20	20																																																																																																																																																																																																																																																																																																																																																																																																																																																																																								
Squirt	18	22																																																																																																																																																																																																																																																																																																																																																																																																																																																																																								
Coca-Cola	17	23																																																																																																																																																																																																																																																																																																																																																																																																																																																																																								
M & S	14	26																																																																																																																																																																																																																																																																																																																																																																																																																																																																																								
King's Carpets	14	26																																																																																																																																																																																																																																																																																																																																																																																																																																																																																								
High scores: Ruth Rose 190; Marion Evans 503; Coca-Cola 804 and 2237.																																																																																																																																																																																																																																																																																																																																																																																																																																																																																										
Monday Nite Ladies - Helen Wetlie, sec.	W	L	T																																																																																																																																																																																																																																																																																																																																																																																																																																																																																							
El Rancho	26	10																																																																																																																																																																																																																																																																																																																																																																																																																																																																																								
Harvale Farms	25	11																																																																																																																																																																																																																																																																																																																																																																																																																																																																																								
Gillette's Dairy	22	14																																																																																																																																																																																																																																																																																																																																																																																																																																																																																								
N & M Oil Co.	22	14																																																																																																																																																																																																																																																																																																																																																																																																																																																																																								
No Tavern	20	16																																																																																																																																																																																																																																																																																																																																																																																																																																																																																								
Love's Signs	18	18																																																																																																																																																																																																																																																																																																																																																																																																																																																																																								
Rogler Electric	17	19																																																																																																																																																																																																																																																																																																																																																																																																																																																																																								
Schmidt-Grable	16	20																																																																																																																																																																																																																																																																																																																																																																																																																																																																																								
Say Drug	15	21																																																																																																																																																																																																																																																																																																																																																																																																																																																																																								
State National Bank	14	22																																																																																																																																																																																																																																																																																																																																																																																																																																																																																								
Dahl's Retirement Center	14	22																																																																																																																																																																																																																																																																																																																																																																																																																																																																																								
Wayne Cold Storage Co.	7	29																																																																																																																																																																																																																																																																																																																																																																																																																																																																																								
High scores: Verne Bruechner 190; Eleanor Peterson 505; El Rancho 816 and 2267.																																																																																																																																																																																																																																																																																																																																																																																																																																																																																										
Friday Nite Ladies - Darlene Helgen, sec.	W	L	T																																																																																																																																																																																																																																																																																																																																																																																																																																																																																							
Blake's	25	11																																																																																																																																																																																																																																																																																																																																																																																																																																																																																								
Lyman's	21	15																																																																																																																																																																																																																																																																																																																																																																																																																																																																																								
Amie's	20	16																																																																																																																																																																																																																																																																																																																																																																																																																																																																																								
Marty's	20	16																																																																																																																																																																																																																																																																																																																																																																																																																																																																																								
Strader-Allen	19	17																																																																																																																																																																																																																																																																																																																																																																																																																																																																																								
People's	18	18																																																																																																																																																																																																																																																																																																																																																																																																																																																																																								
Biff's Market	11	23																																																																																																																																																																																																																																																																																																																																																																																																																																																																																								
Larson's	10	26																																																																																																																																																																																																																																																																																																																																																																																																																																																																																								
High scores: Delores Schulz 193 and 496; Strader-Allen 646 and 1654.																																																																																																																																																																																																																																																																																																																																																																																																																																																																																										
Go Go Ladies - Marian Tikez, sec.	W	L	T																																																																																																																																																																																																																																																																																																																																																																																																																																																																																							
Gutter Dusters	22 1/2	9 1/2																																																																																																																																																																																																																																																																																																																																																																																																																																																																																								
Lucky Four	20 1/2	11 1/2																																																																																																																																																																																																																																																																																																																																																																																																																																																																																								
Lucky Strikers	19 1/2	12 1/2																																																																																																																																																																																																																																																																																																																																																																																																																																																																																								
Jolly Four	17 1/2	14 1/2																																																																																																																																																																																																																																																																																																																																																																																																																																																																																								
People's	15	16																																																																																																																																																																																																																																																																																																																																																																																																																																																																																								
Bowling Belles	14	18																																																																																																																																																																																																																																																																																																																																																																																																																																																																																								
Alley Kats	12	20																																																																																																																																																																																																																																																																																																																																																																																																																																																																																								
Four Winds	6	24																																																																																																																																																																																																																																																																																																																																																																																																																																																																																								
High scores: Francis Nichols 167; Helen Hupp 430; White-Aways 522 and 1522.																																																																																																																																																																																																																																																																																																																																																																																																																																																																																										
Saturday Nite Couples - Elaine Phelan, sec.	W	L	T																																																																																																																																																																																																																																																																																																																																																																																																																																																																																							
Dahl-Burt	27	13																																																																																																																																																																																																																																																																																																																																																																																																																																																																																								
Olson-John-Lacina	26	14																																																																																																																																																																																																																																																																																																																																																																																																																																																																																								
Dech-Mahn	26	14																																																																																																																																																																																																																																																																																																																																																																																																																																																																																								
Vogel-Ann-Trostman	25	15																																																																																																																																																																																																																																																																																																																																																																																																																																																																																								
Phelan-McGowan	25	15																																																																																																																																																																																																																																																																																																																																																																																																																																																																																								
Wagner-Fry	23	17																																																																																																																																																																																																																																																																																																																																																																																																																																																																																								
Daugherty-Branger	23	17																																																																																																																																																																																																																																																																																																																																																																																																																																																																																								
Latt-Happ	22	18																																																																																																																																																																																																																																																																																																																																																																																																																																																																																								
Milo-Nelson	21	19																																																																																																																																																																																																																																																																																																																																																																																																																																																																																								
Schmidt-Jane	21	19																																																																																																																																																																																																																																																																																																																																																																																																																																																																																								
Sollen-Krueger	20	20																																																																																																																																																																																																																																																																																																																																																																																																																																																																																								
Wagner-Nicholson	18	22																																																																																																																																																																																																																																																																																																																																																																																																																																																																																								
Jackie-Winters	17	23																																																																																																																																																																																																																																																																																																																																																																																																																																																																																								
Hansen-Mann	17	23																																																																																																																																																																																																																																																																																																																																																																																																																																																																																								
Johnson-Jankle	16	24																																																																																																																																																																																																																																																																																																																																																																																																																																																																																								
St-Monkamp-Freyer	12	28																																																																																																																																																																																																																																																																																																																																																																																																																																																																																								
Dangberg-Preston	11	29																																																																																																																																																																																																																																																																																																																																																																																																																																																																																								
Dunkan-Jankle	10	30																																																																																																																																																																																																																																																																																																																																																																																																																																																																																								
High scores: Emma Willers 187; Wilma Deek 202 and 544; Joan Hansen 482; Daugherty-Branger 652; Vogel-Ann-Trostman 1946.																																																																																																																																																																																																																																																																																																																																																																																																																																																																																										
Church - Herb Hansen, sec.	W	L	T																																																																																																																																																																																																																																																																																																																																																																																																																																																																																							
Concordia No. 1	27	13																																																																																																																																																																																																																																																																																																																																																																																																																																																																																								
Walter's	26 1/2	13 1/2																																																																																																																																																																																																																																																																																																																																																																																																																																																																																								
Wayne St. Paul	22	18																																																																																																																																																																																																																																																																																																																																																																																																																																																																																								
Grace Lutheran	22	18																																																																																																																																																																																																																																																																																																																																																																																																																																																																																								
Methodist	20	20																																																																																																																																																																																																																																																																																																																																																																																																																																																																																								
Concordia No. 2	19	21																																																																																																																																																																																																																																																																																																																																																																																																																																																																																								
Concordia No. 3	17	23																																																																																																																																																																																																																																																																																																																																																																																																																																																																																								
Wardle St. Paul	17	23																																																																																																																																																																																																																																																																																																																																																																																																																																																																																								
Super Vale	15	25																																																																																																																																																																																																																																																																																																																																																																																																																																																																																								
Carhart's	13	27																																																																																																																																																																																																																																																																																																																																																																																																																																																																																								
Immanuel	14 1/2	25 1/2																																																																																																																																																																																																																																																																																																																																																																																																																																																																																								
High scores: Glenn Walker 238; Marian Johnson 551; Redeemers 864 and 2497.																																																																																																																																																																																																																																																																																																																																																																																																																																																																																										
Community League - Harold Murray, sec.	W	L	T																																																																																																																																																																																																																																																																																																																																																																																																																																																																																							
Bahveener	25	11																																																																																																																																																																																																																																																																																																																																																																																																																																																																																								
Sherry's Farm Service	24	12																																																																																																																																																																																																																																																																																																																																																																																																																																																																																								
Jan Franklin	20	16																																																																																																																																																																																																																																																																																																																																																																																																																																																																																								
V & L Bar	20	16																																																																																																																																																																																																																																																																																																																																																																																																																																																																																								
Langemier	19	17																																																																																																																																																																																																																																																																																																																																																																																																																																																																																								
Super Vale	15	25																																																																																																																																																																																																																																																																																																																																																																																																																																																																																								
Carhart's	13	27																																																																																																																																																																																																																																																																																																																																																																																																																																																																																								
Melodee Cleaners	9	27																																																																																																																																																																																																																																																																																																																																																																																																																																																																																								
High scores: Dale Thompson 228 and 563; Super Vale 82																																																																																																																																																																																																																																																																																																																																																																																																																																																																																										

# Want Ads

## For Sale

VINYL FLOORS CAN HAVE mirror like beauty when Seal Gloss acrylic finish is applied. McNatt Hardware, Wayne, Nebr. n7

## FOR SALE:

3-0 Dignity Photo Erector \$60.00  
30 inch Roper Kitchen Gas Range (like new) \$75.00  
PHONE 375-2797 from 2 to 6 p.m.


WHY RENT when you can own an Automatic Water Softener for as little as \$8.00 per month? Tiedtke's Plumbing & Heating, Ph. 375-2822. o2468

FOR SALE: TV set, excellent condition. Priced to sell. Phone 375-3238. o3113

FOR SALE: College and High School Girls—Turquoise floor length formal, used once for wedding this year. Size 12. Reasonable. Call after 6 p.m., 695-2750. n7

VISIT OUR GIFT department when you need something for that "special day." We have something for every occasion and at all price ranges. Coast to Coast Stores, Wayne. o387

1968 VOLKSWAGEN



IT WON'T DRIVE YOU TO THE POOR HOUSE

Bob Johnson  
Volkswagen Inc.  
Nebraska

## PORK FEED

Friday, November 22

Serving at 6:30

— EVERYONE IS WELCOME —

Tickets are \$1.50

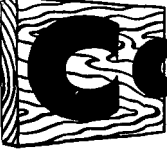
PROCEEDS GO TO THE SUMMER PROGRAM  
Winside American Legion



## TRY CARHART'S 4" x 4" 6-GAUGE WELDED MESH FOR A PERMANENT INSTALLATION

THIS GALVANIZED WIRE FENCING IS AVAILABLE IN 150-FT. ROLLS THAT ARE 5 FEET HIGH

- Advantages of this type feedlot fence:
- ★ Gauged size of wire to withstand normal feedlot requirements.
  - ★ Height to suit even the largest feeder stock.
  - ★ Minimum amounts of posts and dimension for reinforcing.
  - ★ Less fence-building time.



WE CLOSE AT 4:00 P. M. SATURDAYS

# Carhart LUMBER CO.

WANTED: Experienced mechanic. Top wages, with commission, insurance benefits. Modern shop, new building and facilities. Large Ford & Mercury Dealership, P&M Motor Co., Phone 133, Randolph, Nebr. o3122

## Wanted

WANTED TO BUY: Used single, twin or three-quarter size bed. Phone 375-2600. o312f

WANTED DEAD OR DISABLED LIVESTOCK  
Wayne Rendering Co.  
Your Used Cow Dealer

## Real Estate

NEED EXTRA INCOME TO HELP PAY FOR A HOME?

If so, we may have just what you've been looking for, a neat new three bedroom home with a basement apartment, located close to the college campus. This may be the one for you.

Come in and see  
Property Exchange  
117 Professional Building  
Phone 375-2334

## MOLLER AGENCY

REAL ESTATE

RESIDENTIAL FARM COMMERCIAL

117 WEST 3RD STREET  
375-2145

## Special Notice

SATURDAY, NOV. 9  
PFLANZ COMBO

COMING NEXT SATURDAY  
ROGER GRIMM  
and His Combo

We will be CLOSED on Thanksgiving Day

Book your Christmas parties early

LES' STEAK HOUSE

## For Rent

FOR RENT OR SALE: Two-bedroom house. Close to city schools. Immediate possession. Property Exchange, 112 Professional Bldg. Ph. 375-2134. n7f

RENT - A - CAR  
Rates as low as \$5.00 per day plus mileage Mustangs, 4-door Ford Sedans, Station Wagons Available.

WORTMAN AUTO CO.  
Ford Mercury Dealer  
119 East 3rd Ph. 375-2780

## Livestock

FOR SALE: Purebred Yorkshire Boars. Ed Frevert, Wayne. Ph. 375-2461. o3116

## FOR SALE

Choice Minnesota Feeder Pigs delivered on approval. 28 years in the business.  
Handling 500 to 1000 weekly in our new barns. These pigs are from 40 lbs. and up and we will not be undersold.

Buy for less from  
GORDON NESS  
Hector, Minn. Ph. 844-1077

FOR SALE: Purebred big type Black Poland China Boars. New bloodlines for old customers; also herd boar. Albert J. Ilgatz, Emerson. Ph. 695-2151. o3113

## Misc. Services

INSULATE NOW!  
Let us insulate your home on a fuel saving plan. No money down. Fuel savings will make your payments. Contact us for more information. No obligation.  
CALL 375-1343

Morro  
Home Improvement Co.  
220 S. Main St  
Wayne, Nebr.

## MOVING?

Don't take chances with your valuable belongings. Move with Aero Mayflower America's most recommended mover.  
Abler Transfer, Inc.  
Wayne, Nebr. Phone 375-3789  
317f

We service all makes of Radio and TV. Why not enjoy both to the fullest.

McNatt's  
Radio & TV Service  
Phone 375-1533

## Business Opp.

TRIPLE F FEEDS  
Has an opening in Wayne County for sales and service representative. This is a guaranteed income with company benefits, protected territory, family insurance plan.

Phone ED PIPER  
3600 Urbandale Br  
Des Moines, Ia 276-5408

WANTED FARMER DEALERS  
Earn excellent monthly income in your spare time. Your friends and neighbors need our products. Must have fairly new pickup.

Miller Mfg Co, Inc  
Hoskins and Norfolk, Nebraska  
Box 873

## Cards of Thanks

I WISH TO THANK all those who remembered me with cards and letters during my stay in the hospital. Emil Thies. n7

MY SINCERE THANKS for visits, cards and letters from relatives, friends and neighbors while I was in the Veterans Hospital, Omaha. Herbert Peters. n7

I WISH TO THANK those who remembered me with cards, letters, gifts and visits while I was in the Lutheran Hospital, Mrs. Herman Brockman, Win- side. n7

OUR SINCERE THANKS to all who extended comforting sympathy, floral offerings, memorial and spiritual bouquets following the death of Mary Pawelski. Relatives of Mary Pawelski. n7

WE WISH TO EXPRESS our thanks to all our friends and relatives who helped in every way to make the open house for our 50th wedding anniversary, a very happy occasion. The cards, flowers and gifts were most appreciated. Thank you, Mr. and Mrs. David J. Hamer. n7

OUR SINCERE THANKS to everyone for the cards, gifts, flowers and visits. Thanks to Drs. Robert and Walter Bentback and the entire hospital staff for their wonderful care. Also thanks to KTCB and the Wayne Greenhouse for the bouquet of flowers. Mrs. Robert Fuoss and David. n7

## Wayne County Courthouse Roundup

REAL ESTATE TRANSFERS:  
Nov. 1, Jimmie L. and Marcie S. Thomas to Russell and Iona Lindsey, W. 70 feet of lot 13, 14, 15, block 3, College Hill second addition to Wayne, \$26.95 in documentary stamps.  
Nov. 4, Richard D. and Jeanette J. Carlson to Carhart Lumber Co., all of lot 26 except N 150 feet, Taylor and Wachob's addition to Wayne, \$2.75 in documentary stamps.  
COUNTY COURT:  
Nov. 4, Dale Garst, Omaha, \$10 and \$5 costs, speeding, Keith Reed, city police complainant.  
Nov. 4, Gerald Gilbert, Omaha, \$10 and \$7.50 costs, improper turn, Melvin Lamb, city police, complainant.  
Nov. 4, Billy Clements, Emerson, \$10 and \$5 costs, improper use of local plate, C. Hoeman, state patrol, complainant.  
Nov. 5, Keith Lubberstedt, Dixon, \$10 and \$5 costs, speeding, D. Whitted, state patrol, complainant.

LET WANT ADS WORK FOR YOU

The State National Bank  
welcomes the opportunity to handle your orders for purchase or redemption of U.S. Government Securities

# FARM



## AUCTION DATES CLAIMED

PHONE 375-2600 and we will come to YOUR FARM! Claim Your Sale Date Early - Check These Dates First!

## WAYNE HERALD ONE-STOP FARM SALE SERVICE

- INCLUDES —
1. FREE Listing in the newspaper's Calendar of Coming Sales to protect the date you have selected.
  2. Your FREE sale bill printed in bright and assorted colors of regular sale bill paper.
  3. FREE farm sale arrows with your name imprinted on them to direct strangers to your farm sale.
  4. FREE weather insurance for your sale, guaranteeing that even if weather postpones your sale we will re-

- run your sale ad and bills FREE.
5. Experienced help in drawing up your farm sale ad; to make it the kind that DRAWS A CROWD.
  6. We'll take pictures of your livestock and machinery for your sale bill if you wish.
  7. With your sale ad in The Wayne Herald you reach more farmers than in any other medium.
  8. Combination news paper plan of sale ad and sale bills No-up, which makes your advertising complete in one job.
  9. Less expense, less driving and time needed in posting; fewer sale bills needed.
  10. Your newspaper ad in paper gives farmers opportunity to study your sale list over carefully, in their own homes, and decide on the articles they may wish to buy.
  11. If you cannot get in to The Herald office soon, just call 375-2600 collect. We'll be out.

THURSDAY, NOVEMBER 21:  
TED GRAFFIS farm sale, six miles north of Wayne. Extra good line of Holstein cows, Trouman, Lage, Nixon, auctioneers, First State Bank, Randolph, clerk.

THURSDAY, DECEMBER 5:  
RALPH WATSON farm sale, 3 1/2 miles north of Wayne. Extra good line of Holstein milk cows and complete line of farm machinery, Trouman, Lage, Nixon, Auctioneers, First National Bank, Wayne, clerk.

## Bond Refunding Is Board Topic

Nebraska State Normal Board met in Omaha Wednesday to discuss the refunding of \$2,500,000 in revenue bonds which had been issued for the financing of construction of the new dormitory at Wayne State.

Board Secretary, Albin Larson, stated the board is obligated to refund the debt by Sept. 4, 1969, by putting on the market new, permanent revenue bonds, to take the place of the present interim arrangement.

The Board must get the technical approval of State Auditor Ray Johnson before issuing new bonds, who reportedly may question the WSC arrangement, after the State Supreme Court struck down two revenue bond bills in June that had been passed in the last Legislature.

Can the Legislature permit educational agencies to issue revenue bonds beyond the 100-thousand-dollar debt limit provided in the constitution? This is the question which may possibly reach the Supreme Court.

There are revenue bonds for construction at the University of Nebraska which are presently outstanding, worth \$28 million dollars, and \$25 million dollars worth of bonds outstanding for construction at state colleges.

## To Work With Feeds

Thomas McCright, Wayne, has been appointed Territory manager for Gooch's Best Feeds, according to J. V. Ward, Sales Manager of the Lincoln firm.

"McCright will work closely with Shrader-Allen Hatcher as a Nutrition-Sales specialist to serve the livestock feeders in the Wayne area," Ward said.

Prior to joining the Gooch Feed force, McCright was associated with the Formula Feed industry in sales capacities.

## Richard Bressler Named Airline VP

Richard M. Bressler, son of Mr. and Mrs. John T. Bressler, Jr., Monday was named vice president of American Airlines in New York.

Richard Bressler formerly was with General Electric company and now lives in Greenwich, Conn.

PAPER BACK BOOKS  
LARGE SELECTION TO CHOOSE FROM  
Latest Editions  
Wayne Book Store and Office Supplies  
Phone 375-3295



## HOGS IN CORN NEED FELCO HOG BISCUITS

Let your hogs "glean" corn fields after picking. They can pick up a lot of corn that will be wasted otherwise and cause problems in next year's soybean fields. But corn alone can't provide all the protein, vitamins and minerals needed for fast, efficient gains. The answer is Felco Hog Biscuits. They're large, no-waste pellets that are easy to feed because you just throw them on the ground.

All-Supplement  
Felco Hog Biscuits are an all-supplement formulation. There has been no grain added to them. They should be fed to growing feeder pigs and finishing hogs from seventy-five pounds to market weight that are feeding in corn fields or eating ear corn. Check the Felco Pork Production Guide for specific instructions.

Stop In or Call Soon!



Farmers Co-Op.  
122 S. MAIN PH. 375-1116

NOW THAT THE VOTES ARE IN . . .

# Cast Your Ballot

for One of Our

# A-1 USED CARS

68 Ford Galaxie 500  
4-Dr., 2-tone, V-8, Automatic, Radio, Air Conditioning, Power Steering.

68 Mustang CONVERTIBLE — V-8, Automatic, Power Steering.

67 Thunderbird LANDAU — 4-Dr., Fully Equipped, Power Brakes, Power Steering, Air Conditioning, Speed Control.

67 Dodge Monaco 4-Dr., Hardtop, Power Steering, Power Brakes, Air Conditioning.

66 Chevrolet BelAir STATION WAGON — V-8, Automatic, Power Steering.

66 Ford Mustang 2-Dr., Hardtop, V-8, Automatic.

65 Buick Riviera 2-Dr., Hardtop, V-8, Automatic, Power Steering, Air Conditioning.

65 Ford Mustang 2-Dr., Hardtop, V-8, Stick Transmission.

65 Toyota 4-Dr., Sedan, Stick with Overdrive.

64 Ford Galaxie 500 2-Dr., Hardtop, V-8, Stick with Overdrive.

64 Ford Country Sedan, 8-cylinder, Automatic.

64 Ford Falcon 2-Dr., Sport Sedan, 6-Cylinder, 4-Speed Trans.

64 Ford Galaxie 500 4-Dr., Sedan, V-8, Automatic, Power Steering, Air Conditioning.

65 Ford Galaxie 4-Dr., V-8, Automatic.

63 Ford 2-Dr., Hardtop, V-8, Automatic, Air Conditioning.

63 Mercury 4-Dr., Automatic, Power Steering and Brakes.

## USED PICKUPS

62 Ford Pickup F100 6-Cylinder, 3-Speed. Completely Reconditioned.

62 Chev. Corvair Van 6-Cylinder, 4-Speed Transmission.

61 Chevrolet 3/4-ton 6-Cylinder, 4-Speed.

54 Ford 2-ton 4-Speed, 2-Speed, Box and Hoist.

52 Ford 1/2-ton PICKUP - V-8, 4-Speed.

49 International 3/4-t. PICKUP - 4-Speed.

Wayne Nebr. Ph. 375-3780

# WAKEFIELD NEWS

Mrs. Floyd Gray — Phone 287-2094

WCTU will meet with Mrs. Grover Carr Nov. 8.

Last Wednesday afternoon eight ladies helped Mrs. Beasle Packer celebrate her birthday.

Mr. and Mrs. Reynold Anderson and Sally Anderson, Wayne, were Sunday afternoon callers to the Wesley Anderson home, Wausa.

## Churches -

**Evangelical Covenant Church** (Fred Jansson, pastor)  
 Thursday, Nov. 7: Junior choir rehearsal, 4 p.m.; midweek service, 7:30; choir rehearsal, 8:30.

**Saturday, Nov. 9:** Confirmation class, 9 a.m.

**Sunday, Nov. 10:** Sunday school, 10 a.m.; morning worship, 11.

**Monday, Nov. 11:** Pioneer Girls, 9 p.m.

**Wednesday, Nov. 13:** Covenant Women, 2:30 p.m.; Boys Brigade, 8.

**St. John's Lutheran Church** (Missouri Synod)  
 (R. P. Albrecht, pastor)  
 Sunday, Nov. 10: Sunday school, 9:30 a.m.; worship, 10:30.

**Christian Church** (John Epperson, pastor)  
 Wednesday, Nov. 6: (choir, 7 p.m.; Bible Study, 7:45; Teachers' meeting, 8:30).

**Thursday, Nov. 7:** Board meeting, 8 p.m.

**Sunday, Nov. 10:** Bible School, 9:45 a.m.; morning worship, 10:55; Preaching rally at Morningside, 2 p.m.

**Wednesday, Nov. 13:** Choir, 7 p.m.; Bible Study, 7:45.

**United Presbyterian Church** (James Marlett, pastor)  
 Thursday, Nov. 7: 11:15, 2 p.m.; Trustees and session and choir rehearsal, 8.

**Sunday, Nov. 10:** First Stewardship Sunday—Sunday school, 9:45 a.m.; worship, 11.

**Tuesday, Nov. 12:** Presby-

tery meets at Clarkson, 8:30 a.m.

**Salem Lutheran Church** (Robert V. Johnson, pastor)  
 Thursday, Nov. 7: L.C.W. Circles, 2 p.m.; Junior choir, 4; Senior choir, 7:30.

**Saturday, Nov. 9:** Confirmation classes, 9 and 10:30 a.m.

**Sunday, Nov. 10:** Worship, 8:30 a.m.; church school, 9:35; worship, 11; Stewardship meeting, 7:30 p.m.

**Monday, Nov. 11:** Churchmen, 8 p.m.

**Wednesday, Nov. 13:** Afternoon L.C.W. workshop.

**Mr. and Mrs. Bud Lutt and Verdel, Wayne, Mr. and Mrs. Kenneth Baker and Twila, Mr. and Mrs. Ted Hoeman and family, Winside, Mr. and Mrs. John Blize and Connie, Mrs. Matilda Boreman, Mrs. Mable Thomsen and Myrtle Suhr, Wayne, Mr. and Mrs. Imanuel Baker and family and Mrs. Robert Masteller, Sioux City, were Sunday dinner guests in the Clarence Baker home, Mrs. Leora Nichols and Ethel, Sioux City, were there in the evening.**

Last Tuesday Mr. and Mrs. Martin Holmberg and Mrs. Marian Christiansen were in Omaha to meet Sylvia Stjernfeldt, Stockholm, Sweden. She had lived with the Holmbergs for 16 months, about four years ago and came Tuesday for a month's vacation.

**SOUTHWEST Wakefield**  
 by Mrs. Lawrence Ring  
 Phone 287-2620

Ed Sandahl's 80th birthday of Friday was observed when the following were afternoon lunch-guests: Mr. and Mrs. E. J. Burman, Mrs. E. E. Hyspe, Mr. and Mrs. Dick Sandahl and Mr. and Mrs. Lawrence Ring and Mary Elinor. Sunday their children, Al Sandahl, Mrs. Homer Biermann and Morris Sandahl

with their families entertained at a family dinner in the home. Present were Mr. and Mrs. Al Sandahl and Elaine, Laurel, Mrs. Biermann, Bradley and Christine, all of Winer, Mr. and Mrs. Morris Sandahl, John, Jennifer and Eddie, Wayne, Mr. and Mrs. J. C. Bressler, Roy and Ben Fredrickson, Mrs. E. E. Hyspe, Mr. and Mrs. Dick Sandahl and Mr. and Mrs. Lawrence Ring. The granddaughters provided music during the afternoon. Mrs. Viola Strom joined the group for lunch.

Mary Elinor Ring came from Omaha for her uncle's birthday observance and Friday evening was in the Wesley Rubek home to celebrate their 40th wedding anniversary of the week. Sunday a group of 20 relatives was entertained in the Jack Rubek home for the event.

Mrs. Emil Lund, Mrs. Art Louge and Mrs. Fred Techt were at Laurel Sunday afternoon for a pre-nuptial shower for Mary Lynn Kavanagh, a granddaughter of the Al Rubeks, who will be married Nov. 30.

Mr. and Mrs. Forrest Hansen, Oakland, were dinner guests Sunday in the John Boeckenhauer home. All went to the Earl Helkes home, Maskell, in the afternoon to see Mrs. Lyle Boeckenhauer and Keril Lynn.

Mr. and Mrs. Bud Erlanson went to Cherokee, Ia., Sunday to see her mother, Mrs. F. O. Mortenson who is now in a nursing home.

Arthur Felt, Sharon Felt and Randy Shaw of WSC were in the Marvin Felt home for dinner Sunday. That night word was received of the death of Mrs. Felt's father, Oscar Anderson, at Otceola hospital where he has been a patient for some time.

Mrs. C. L. Bard accompanied Mrs. Marian Christiansen to Stanton Wednesday to visit Mrs. Aleda Holmberg at the nursing home. Thursday, Mrs. Christiansen took Mrs. Martin Holmberg and Sylvia Stjernfeldt to visit in the William Djerf home at Cedar Rapids, and Tom Cooks, Mason City, Ia., and at the Chester Larsons, Hector, Minn. The Gordon

Bard's 24th wedding anniversary of Saturday was celebrated when Jane came from Omaha and with the Jim Stouts were at the Wagon Wheel for supper. Steve Steele came from Omaha to spend Sunday in the Bard home when Mrs. C. L. Bard and the Jim Stout family were also guests at dinner.

In the Reuben Goldberg home for dinner Sunday were Mr. and Mrs. Erick G. Johnson, Mr. and Mrs. Martin Holmberg and Sylvia Stjernfeldt. Mrs. JaNoin Eckley and children joined them in the afternoon.

Mr. and Mrs. Orville Larson and family and Mr. and Mrs. Randy Larson and Michael were in the Al Fredericksen home Sunday evening to celebrate his birthday.

Last Tuesday evening Mr. and Mrs. Charles Pierson, Mr. and Mrs. Jim Chambers and Mr. and Mrs. Max Carlsson were at Wausa for the smorgasbord in Mrs. Chambers' birthday was celebrated Wednesday when ladies of the neighborhood visited her in the afternoon and the Chambers' relatives surprised her for a social evening.

A cousin of the Kinneys, a Keith Moraine, Omaha, was a guest in the Charles Kinney, jr. home Friday and Saturday nights while doing some hunting. There also for dinner Sunday were Mr. and Mrs. Walter Otte and Mr. and Mrs. Sanford Otte.

Connie Roberts was among four hundred seniors from northeast Nebraska who took scholastic aptitude tests at Norfolk Junior college Saturday. From that of the regents scholarship winners will be determined.

Mr. and Mrs. Marvin Rasmussen, Homer, visited in the Kenneth Gustafson home Sunday afternoon.

**Rites Tuesday for Accident Victim, Janine Brown, 21**

Funeral services for Janine Beth Brown, 21, were held Tuesday, Nov. 5, at 1:30 p.m. at First United Methodist Church, Wayne. Miss Brown died Saturday as a result of injuries received in a one-car accident on an interstate highway about 25 miles west of Des Moines, Ia. Miss Brown's fiancé, Richard Martin, of Tecumseh, a passenger in the car, was treated at a hospital for minor injuries and released.

Rev. Cecil Bliss officiated at the rites. Connee Black, Mrs. Fred Webber, Jim Stehke and LeWayne Carlsson sang "Lord Jesus, I Love Thee," "More Love to Thee, Oh Christ" and "I Know That My Redeemer Lives." Paulette Merchant was accompanist. Pallbearers were Dean Elfson, Dean Thompson, Mark Johnson, Robert Morris, Ben Roe and Paul Martin. Burial was in Pleasant Hill Cemetery, Ireton, Ia.

Janine Beth Brown, daughter of Dr. and Mrs. James M. Brown, was born May 15, 1947 at LeMars, Ia. She was graduated from Wayne High School in 1965. At the time of her death she was a senior at Nebraska Wesleyan University at Lincoln. Her major field was in special education with a minor in music. She was engaged to Richard Martin of Tecumseh and was planning a Dec. 21 wedding.

Survivors include her parents; a sister, Susan, and three brothers, David, William and Daniel, all of Wayne; grandparents, Mr. and Mrs. H. M. Brown, Ireton, Ia., and other relatives.

**SAT Test Taken By WHS Seniors**

Twenty Wayne High seniors were among approximately 400 northeast Nebraska seniors taking SAT exams at Norfolk Junior high school Saturday.

The scholastic aptitude tests (SAT) is a College Board examination used by University of Nebraska officials in deciding Regent scholarship winners, and is also used by the University and other colleges as a placement test.

Norfolk High School's guidance director, Willotte Medow, served as supervisor with the assistance of 13 other Norfolk instructors, in giving the test.

**WSC Musicians Present Recital**

Performing at Wayne State's third student recital Friday were the following 12 students: Dick Lahr, Laurel, tympani; Bob Barr, Wayne, vocal baritone; Gloria Schindler, Ewing, mezzo soprano; Vance Wolverton, Underwood, Ia., alto saxophone; Dan Praetner, Neligh, trombone and tenor vocal; Roger Polk, Pierre, tenor; Karen Orr, Omaha, harp; Jackie Armstrong, Milford, piano; Sallie Bergt, Wayne, soprano; Gary Willett, Woodbine, Ia., trombone; Jim Stehke, Council Bluffs, Ia., tenor, and Cassie Wilbeck, Minden, clarinet.

Those accompanying were

Sallie Bergt and Paulette Merchant of Wayne, and Joan Bobenmoyer of Hartington.

The recitals inaugurated by Dr. Raymond Kelton, fine arts division chairman, provide opportunity for applied music students to perform, and are scheduled for the first and third Fridays of each month in the Ramsey Theater at 11:15 a.m. Recitals and concerts are open to the public, according to Dr. Kelton.

## Profit or Loss on Cattle Usually Determined Early, Beef Expert Says

"The first two weeks usually determines the profit or loss on a lot of cattle," a successful large feeder recently told Walter Tolman, area beef specialist at the NE Station near Concord. All range cattle are tired and excited as they come to the feed lots. Fresh-weaned calves are under more stress than yearlings or "pre-conditioned" calves—the longer the time in shipment the more the upset—and exposure due to weather change, dust or movement through disease-infested yards or trucks all bring extra problems, Tolman explained.

There is no best way to handle these "new" cattle, but rest and return to normal feed intake are keys to success. Treatments of one sort or other are poor substitutes for "loving care"; treatments are not only expensive but may actually add to the stress on the cattle if they are not needed, according to Tolman. Careful watching of "new" cattle, a temperature check of any

Carroll Church Has Dedication

Carroll Methodist Church held dedication services Sunday for their new hymnals and carpeting. Rev. Robert Swanson, minister, was in charge of the special program.

A dedication of the hymnals in memory of Ed Shufeldt and Mrs. William Swanson was made by Mrs. Ed Shufeldt and William Swanson.

New carpeting, which included memorials of the late Elmer Phillips and Mrs. Gwen Miller, has been installed.

Those persons giving new hymnals to the church were Mr.

Rites Friday for Alice E. Hurlbert

Funeral services for Mrs. Alice E. Hurlbert, 94, are planned Friday, Nov. 8, at 2 p.m. at First Baptist Church, Wayne. Mrs. Hurlbert, former Carroll resident, died Tuesday at Dahl Retirement Center, Wayne. The body will lie in state today (Thursday) at Hixcox Funeral Home, Wayne, from 3 to 9 p.m.

**My Sincere Thanks**

To everyone who supported me in this past election.

LUVERNA HILTON

Read and Use The Wayne Herald Want Ads — The Little Ads That Do The BIG Job

**A Merry Christmas begins at McDonald's**

**What Shape is Your FAMILY HEALTH CENTER in?**

**3 PIECE CLINICAL THERMOMETER SAV-MOR \$1.25**

**CONTACT Box of 20 \$2.85 size \$1.99**

**Dicalcium Phosphate \$1.66 Capsules with Vitamin D 250's - Reg. \$2.45, ONLY**

**BAYER ASPIRIN Bayer Aspirin 100's - 98c size SAV-MOR 69¢**

**PEPTO-BISMOL 98c size Sav-Mor 69c**

**VICKS VAPO-RUB 98c size Sav-Mor 69c**

**COMBINATION BOTTLE & SYRINGE 3-yr. Guarantee \$4.29 Value \$2.99 ONLY**

**BAND-AID plastic Strips BAND-AID Plastic Strips Econ. pkg. 98c Value Sav-Mor 69c**

**RAYETTE HAIR DRYER \$27.95 Value SAV-MOR \$19.95**

**SAV-MOR DRUG**  
 FREE PICK UP & DELIVERY ON ALL PRESCRIPTIONS  
 Walgreen Drug  
 1022 MAIN PHONE 375-1444

**WRAP HER IN THE FINEST . . . FLATTERING LUXURY ROBES!**

**A. ELEGANT LONG ROBE BY BASILA®**  
 Nylon quilted robe with Kodol® polyester fiberfill lining. Completely washable. Sapphire, sungold. Sizes 12-18 \$18

**B. CLOUT-LIGHT ROBE BY LISANNE®**  
 Nylon quilted short robe with Kodol® polyester fiberfill. Dainty embroidered tucked cotton voile and lace panel front. Pink. Sizes 10-18. \$14

**C. CLASSIC SHORT ROBE BY BASILA®**  
 Puffy quilted nylon robe with rayon satin trim. Kodol® polyester fiberfill. Sungold, pink coral, aquamarine. S-M-L. \$12

**D. "FEATHERLITE" DUSTER by Janet Lynn®**  
 100% polyester floral print with zip front. Washes and dries in minutes. "Traveller" style. Lilac/pink. Sizes S-M-L. \$15

**Shag Collar Opera**  
 Warm shearing lamb upper with cotton fleece lining. Corise, blue, green, gold, orange. Misses' sizes 5-10 4.99

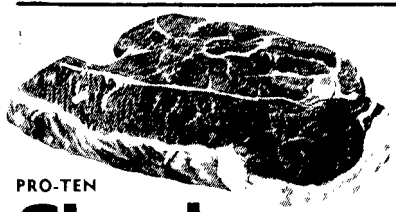
**Women's Suede Boot**  
 Warm suede leather upper with matching suede leather sole and shearing lamb collar. Sizes 5-10. 5.98

**Shaggy Acrylic Opera**  
 Long fiber acrylic upper, Cotan (vinyl) outsole. Blue, corise, gold, green. Sizes 5-10. 3.99

**REMEMBER . . . the prettiest FREE GIFT WRAPPING in town!**

# Sample Our Food Savings

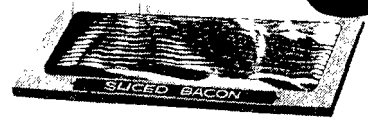
THE CHANGE WILL DO YOU GOOD



PRO-TEN  
**Chuck Steaks** lb **69¢**

CHOPPED PORK LUNCHEON MEAT  
Lb **69¢**

SWIFT'S PREMIUM  
**BACON**  
lb. pkg. **59¢**



Morrell's

Skinless,  
Shankless,  
Defatted

**HAM**  
Whole or Butt Half, lb. **65¢**  
Center Cut Ham Roast, lb. **98¢**  
Or Center Slices

PRICES GOOD THURS. - SAT.  
NOVEMBER 7 thru 9.

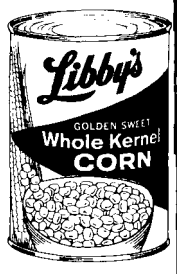
10 lb. bag  
**SUGAR**  
**\$1.09**  
10 LB BAG  
Coupon worth 20c in each bag

Gooches Noodles  
10-oz. pkg. **25¢**

Karo RED LABEL Syrup  
qt. jar **59¢**

OCEAN SPRAY Cranberry SAUCE  
Whole or Jelled  
2 1-lb. Cans **39¢**

CREAM STYLE or WHOLE KERNEL Golden  
**Libby's CORN**  
303 CANS **\$1.**



SPRY 3-lb. can **69¢**



FRESH CRISP  
**LETTUCE**  
LB. **15¢**



TEXAS RED



EMPEROR TOKAY RED

**GRAPEFRUIT** 5 lb. bag **69¢**  
**GRAPES** 19¢ lb.

Charmin White or Asst. **4** PAK  
**TOILET TISSUE** **39¢**

FRESH CALIFORNIA  
**CARROTS** 9¢ pkg.



**HEINZ KETCHUP**  
14-oz. bottle **2 45¢**



**SCOTT TOWELS**  
Decorator / Assorted Big Roll **29¢**



CASH NIGHT DRAWING  
in our store  
Thursday at 8 p.m.  
for \$250.00.

**Shurfine THROWN STUFFED MANZANILLA OLIVES**  
12-oz. jar **49¢**

Wilderness **PIE FILLING**  
Apple-Cherry

**\$1.00**  
3 No. 2 cans

**Anchors Aweigh PINK SALMON**  
16-oz. Can **69¢**

FROZEN (Headless and Dressed)  
**Whiting** 10-lb. box **1.89**

SNOW CROP FROZEN  
**ORANGE JUICE** 2 Large 12-oz. cans **79¢**

TREMENDOUS SAVINGS A-LA-CART

(We reserve the right to limit quantities)



# ARNIE'S

1034 Main

Just Across from the College Campus

Phone 375-2440



**NEW OFFICERS** of the Wayne County Cancer Society took over their positions at the society's meeting Tuesday night. New officers are (from left) Dr. George John, director of education; Mrs. Leo Hansen, secretary; Mrs. Fred Gildersleve, scrapbook chairman; Mrs. Rudy Longe, president; Mrs. Mathilde Harms, publicity chairman; and Mrs. J. N. Einung, membership chairman.

2 The Wayne (Nebr.) Herald, Thursday, November 7, 1968

# WINSIDE NEWS

Mrs. Edward Oswald Phone 286-4872

Mr. and Mrs. Robert Hamm are living at Neola, Ia., for a time where Mr. Hamm is practicing teaching. He is the son of Mr. and Mrs. Walter Hamm, Winside.

Mrs. Elizabeth Griffith, Valley View Nursing Home, Wausa, was a weekend guest in the Wilva Jenkins home.

Wednesday evening guests in the Vernon Miller home for the birthday of Kyle were Mrs. Alice Boyce and Linda, Mrs. Ella Miller, Mr. and Mrs. Warren Marozz and family and Mrs. Don Matthes and family.

Dinner guests Sunday in the Harry Suehl, sr. home were Mr. and Mrs. Roy Kester, Clearwater. Afternoon guests were Mr. and Mrs. Lloyd Olson, Laurel.

Mrs. George Farran and Melissa and Mr. and Mrs. Alfred Miller were dinner guests Sunday in the Eugene Miller home, Omaha.

Dinner guests Saturday evening in the Mrs. Paul Zoffka home to honor Pastor and Mrs. Otto H. F. Mueller and family, who are leaving or Illinois soon, were Mrs. Dora Ritze, Mr. and

Mrs. John Rohlf and Mr. and Mrs. Martin Pfeiffer.

Dinner guests Sunday in the Walter Hamm home were Mr. and Mrs. Frank Hamm, Osmond, Helen Hamm and Tom Brogmeyer, Norfolk.

**Society -**

**Social Forecast**  
Thursday, Nov. 7  
Coterie, Mrs. Blanche Erickson  
Friday, Nov. 8  
Pinochle, Mrs. Frank Dangberg  
Neighboring Circle, Leo Voss  
Saturday, Nov. 9  
Auxiliary, Legion Hall  
Sunday, Nov. 10  
Mr. and Mrs. Card Club, Ted Hoeman  
Couples Card Club  
Monday, Nov. 11  
Fireman's, Fire Hall  
Tuesday, Nov. 12  
Town and Country, Mrs. Paul Zoffka  
Ruth Circle, Methodist Church  
Vesper Circle, Methodist Church  
Winside Saddle Club

tainment with prizes going to Mrs. Edna Rasmussen, high and Mrs. Waldon Brugger, low. Next meeting will be Nov. 13 with Edna Rasmussen when election of officers will be held.

**Frank Hamm Honored**  
Guests Sunday afternoon in the Walter Hamm home for a surprise party honoring Frank Hamm for his 80th birthday were Mr. and Mrs. F. Hamm, Osmond, Mr. and Mrs. Don Hamm and children, Carroll, Mr. and Mrs. Darold Hamm and children, Mr. and Mrs. Duane Hamm and children, Mrs. Bryce Lindsay and children, Mr. and Mrs. Frank Lindsay, Mr. and Mrs. Mervin Hamm and Mr. and Mrs. Gerald Pospisil and children, all of Wayne, Helen Hamm and Tom Brogmeyer, Norfolk, Mr. and Mrs. Mervin Hamm and children and Mr. and Mrs. Ezel Wilson, Winside, and Mr. and Mrs. Flwin Chandler, Grand Island, and Mr. and Mrs. Robert Hamm, Neola, Ia. Mrs. Frank Lindsay, Wayne, baked and decorated the birthday cake with eight candles. Mr. and Mrs. Walter Hamm took the Frank Hamm to their home in Osmond Sunday evening.

**BC Club Meets**  
BC Club met Friday with Mrs. Warren Baird. Eleven members answered roll call, "My Family's Favorite Thanksgiving Dish." Officers elected were president, Mrs. Clarence Johnson; vice president, Mrs. Glenn Wade; secretary-treasurer, Mrs. Richard Beeg; Henrietta Baird and Mrs. Harry Helmmann are on the executive board.

Plans were made for a family Christmas party the evening of Dec. 6 at the Darrel Franzen home.

**Three-Four Club**  
Three-Four Bridge Club met Friday at the Robert Koll home with nine members present. Guests were Mrs. Ervin Jaeger, Mrs. Alvin Carlson, Mrs. Gary

Kant and Mrs. Stanley Boden. Prizes were won by Mrs. Frank Weiblo, high and Mrs. Carl Troutman, second high. Guest prizes were won by Mrs. Edna Jaeger and Mrs. Alvin Carlson. Nov. 15 meeting will be with Mrs. Carl Troutman.

**Warnemunde Baby Baptized**  
Julie Kay, infant daughter of Mr. and Mrs. David Warnemunde, was baptized Sunday at St. Paul's Lutheran Church, Winside, with Pastor H. M. Hillpert officiating. Sponsors were Gayle Schrieber, Wakefield, and Lynn Lessman, Wayne. Dinner guests Sunday in the Warnemunde home were Mr. and Mrs. F. T. Warnemunde, Mr. and Mrs. Don Sherbahn, Wayne, Mr. and Mrs. Willis Lessman and family, Wayne, Mr. and Mrs. Elmer Schrieber and family and Rev. and Mrs. H. M. Hillpert.

Mr. and Mrs. Billy Wylie, Wayne, and Mrs. Charlotte Wylie spent Saturday and Sunday in the Loren Beckler and Ed Pinger homes, Columbus.

Dinner guests Sunday in the Andrew Mann home were Mr. and Mrs. Roger Thompson, Newman Grove, and Mrs. Ella Ayres and Reggie, Norfolk, Mr. and Mrs. John Redel, Wayne, and Mr. and Mrs. Elmer Monk were Wednesday evening visitors in the Andrew Mann home.

Mrs. Adolf Miller spent Sunday in the Vernon Miller home to care for the Miller children while their parents took a load of youngsters to Seward.

Mrs. Ralph Nathan, Mrs. Guernsey Hansen and Mrs. Joe Thompson visited Ralph Nathan at Omaha Veteran's Hospital Thursday. Sunday Mrs. Nathan, Gust and Ida Hank visited Mr. Nathan.

Mr. and Mrs. John Rohlf, Mrs. Dora Ritze, Mr. and Mrs. Martin Pfeiffer, Mr. and Mrs. Edgar Marozz, Mr. and Mrs. Adolph Rohlf, Mrs. John Schlerly and children, Mr. and Mrs. Merlin Rinehardt and Mr. and Mrs. Emil Rinehardt were dinner guests Sunday in the Les Youngmeyer home, Altona, for the birthday of Mrs. Emil Rinehardt.

Diane Wacker, Kansas City, Barbara Bose, Fort Wayne, Ind., and Linda Hiltz, Rutledge, Minn., spent the weekend in the home of Diane's parents, Mr. and Mrs. Don Wacker.

Mrs. Sam Zimmerman and Nadyne, Ponca, were Tuesday afternoon guests in the Henry Dangberg home. Evening guests in the Dangberg home were Mr. and Mrs. William Janke, Mrs. Herman Jaeger and Mrs. Blanche Erickson. Mr. and Mrs. H. Dangberg were visitors Thursday evening in the Fred Dangberg home to visit Mrs. Henry Weseloh.

**Mary Pawelski Funeral Services Held Here Monday**

Funeral services for Mary Elizabeth Pawelski, 88, were held Nov. 4 at 10 a.m. at St. Mary's Catholic Church. Miss Pawelski died Nov. 1 at Wayne Hospital.

Father Paul Bagley officiated at the rites. Pallbearers were Carl Nuss, Edward Johnson, William Collins, Norbert Brugger, Emil Uhen and R. H. Banister. Burial is completed, Mr. Stalling has been transferred from Lincoln to Norfolk.

Mr. and Mrs. Bill Bentz and children, Spencer, were weekend guests in the Filton Miller home to hunt pheasants. The ladies are sisters.

Clara and Ellen Nelson, Council Bluffs, were Sunday afternoon guests in the Mrs. Iulda Bloomquist home. Mr. and Mrs. Halmer Lund and Mr. and Mrs. Thore Johnson joined the group.

Mr. and Mrs. Art Mayer joined relatives and friends helping Mrs. Albert Iuetig, Laurel, observe her birthday Thursday evening. Friday evening they were among a group celebrating Will Victor's birthday.

Mr. and Mrs. Otto Saha, Norfolk, who had visited in the Melvin Saha home, Schuyler, Friday were Sunday afternoon callers in the Theron Culton home. Mr. Culton, who is improving, returned to Omaha Sunday evening for further treatment.

**Wayne Herald Want Ads Provide INSTANT READER RESPONSE**

**NORTHWEST Wakefield**  
by Mrs. Wallace Ring Phone 287-2620

Mrs. Norman Anderson observed her birthday Tuesday afternoon when several neighbors and friends came to spend the

Church Men of Trinity Lutheran  
Wednesday, Nov. 13  
Social Circle, Edna Rasmussen

Trinity Youth League  
Lutheran Church  
Immanuel Missionary Women's Society, Steve Nettleton home.

Leisure Ladies  
Leisure Ladies met Thursday at the Delmar Krempfle home with six members present. Cards were played with prizes going to Mrs. Vernon Jensen, high and Mrs. Alvin Barestadt, low. Nov. 21 meeting will be with Mrs. Clifton Burris.

Social Circle Meets  
Social Circle met Wednesday afternoon in the William Cary home with 13 members present. Summerset served for enter-

## Churches -

**Trinity Lutheran Church**  
(Otto H. F. Mueller, pastor)  
Saturday, Nov. 9: Saturday confirmation classes; Senior class, 9:30 a.m.; Junior class, 10:20; middle class, 11:20.  
Sunday, Nov. 10: Sunday school, 10 a.m.; worship, 11. Wednesday, Nov. 13: Church Women of Trinity Lutheran, afternoon; Trinity Youth League, evening.

**Methodist Church**  
(Robert Swanson, pastor)  
Sunday, Nov. 10: Sunday school, 10 a.m.; worship, 11. Tuesday, Nov. 12: Ruth Circle, afternoon; Vesper Circle, evening.

**St. Paul's Lutheran Church**  
(H. M. Hillpert, pastor)  
Saturday, Nov. 9: Saturday church school, 1-3:30 p.m.  
Sunday, Nov. 10: Sunday school, 9:30 a.m.; worship, 10:20.  
Tuesday, Nov. 12: Choir, 7:30 p.m.

## Gasoline Taxes Up Two Million

Nebraska State Tax Commissioner's office reported Monday that gasoline tax collections for 1968 are running almost two million dollars ahead of last year.

Remitted through the first 10 months of this year have been \$49,357,680 compared to \$47,862,372 for the same period in 1967.

Nebraska collected \$4,400,000 in October on motor fuel, \$428,000 on special fuels and \$131,000 on aircraft fuel manufactured or imported the previous month, for a total of \$4,800,000.

The tax on cigarettes also is up according to the Tax Commissioner's office.



**CHURCH WOMEN UNITED** displaying garments sewn to be sent to Indonesia (from left) are Mrs. Julia Hass, Mrs. Carlos Martin, Mrs. Armand Hiscox, Mrs. Laurine Beckman, and Mrs. Walter Tolman. Garments were on display during the World Community Day service Friday afternoon in the Redeemer Lutheran Church.

A SINCERE  
**THANK YOU**  
To all the people who supported me in this election.  
**Elmer Wallwey**

USE HERALD WANT ADS

**Japanese Violinist Plays at Sioux City**

Violinist Takako Nishizaki will appear as soloist with the Sioux City Symphony Orchestra Sunday afternoon at 4 at the Municipal Auditorium when the orchestra will play the second concert of the 1968-69 season.

A child prodigy in Japan, she first studied under her father, a Suzuki disciple. Later, she attended the Juillard School of Music in New York and studied under the famed Joseph Fuchs.

For ticket information, write Sioux City Symphony Orchestra Association, 402 Commerce Bldg.

**Schuyler Packing Co.**  
SCHUYLER, NEBRASKA  
"Your Best Market For Your Fed Cattle"  
Plant Phone 1-800-442-9360  
(No Toll Charge - Nebraska Only)  
Area Buyer, JOHN FOLTZ, Phone 371-0750, Norfolk  
- All Buyers Have 2-Way Radios -

**CASH IN NOW!**  
at Brandstetter Implement **MONEY-MAKING FARMHAND FALL HARVEST OF VALUES**

- 2 FREE OFFERS—When you buy any model—"20-ways-new"—Farmhand Feedmaster portable grinder-mixer.
  - 1 With the purchase of any new model Feedmaster you will receive FREE a magnet attachment worth from \$60 to \$100. This valuable accessory is just the ticket for keeping stray bits of metal out of your ground feed. Protects your grinder-mixer and your livestock, too.)
  - 2 And to sweeten the deal—If you trade in a used grinder-mixer (Farmhand or other model), Farmhand will send you a check for an extra \$25.
- OFFER good until January 25, 1969. This money saving offer is just the start. Because when you put a Feedmaster to work in your feeding operation—you'll find it's a grinder-mixer that's second-to-none in the industry.

**Farmhand Feedmaster Model F-810**

- "20-ways-new"—That's right—20 new Feedmaster design improvements make your feed operation faster, more efficient, more profitable.
- 4 models to choose from—102 cu. ft. capacity F-810 (drop feeder) and F-820 (plain table) and the big 142 cu. ft. capacity F-85 (drop feeder) and F-86 (combination bale table and grain hopper). There's one just right for your feeding operation.

Come in today and get all the details on this great money-saving Feedmaster offer. You won't go wrong with a Feedmaster.

**Who ever thought Bifocal Glasses could be so beautiful and so inexpensive?**

**Pearle Optical did. We pioneered the idea.**

When you have difficulty seeing well in both the near and far ranges it's a blessing to know there is a place where the finest bifocal glasses are well within your budget. Pearle planned it that way. And we add the extra zing in styling that makes getting new Pearle Optical glasses like a spring tonic. Come in and try on one of our feather-light beauties. Give your spirits a lovely lift. See Pearle Optical now!

KRYPTOK BIFOCAL GLASSES, INCLUDING LENSES AND FRAMES, FROM \$16.99

Open Daily, Including All Day Saturday  
**Pearle Optical**  
Convenient Terms  
**NORFOLK: 232 NORFOLK AVENUE - PHONE 371-8580**

**YOUR GRAIN + Gooch's BEST PIG MIXER 1000**  
(the 36% grain balancer that meets pigs' Aureo SP 250 needs when mixed 1 to 3 parts grain)

Here is the way to make your grain grow more pounds of pig!

See Us!  
**Ritze Farm Supply**  
Winside, Nebraska  
Your Headquarters for Gooch's Best Feeds and to the farm delivery of sack and bulk feeds.

**Brandstetter Impl. Co.**  
116 West First Phone 375-3325





# CARROLL NEWS

Mrs. Forrest Nettleton — Phone 585-4833

Mr. and Mrs. Ervin Wittler joined friends and relatives Sunday at the Coleridge Lutheran Church in honor of his aunt and uncle, Mr. and Mrs. John Konken's 50th wedding anniversary.

Mrs. Anton Peterson was hostess to a group of ladies at a card party Wednesday afternoon. Present were Mrs. Harry Dahm, Mrs. Ethel Phipps, Wayne, Mrs. Lora Johnson, Mrs. Marie Ahern and Mrs. Dora Griffith.

Guests in the John Hamm home were Mr. and Mrs. Kenneth Hamm and daughters, Fremont, Mr. and Mrs. Wesley Hamm, Barbara and Sylvia, San Antonio, Tex., and Mr. and Mrs. John Hamm, Jr., Beale AFB, Calif. They were called home by the death of their brother, Merle Hamm, Norfolk.

Weekend guests in the Doug Dreezen home, Westfield, Ia., in honor of the birthdays of Claud and Mrs. Dreezen were Mr. and Mrs. Alec Eddle and Dorothy, Mrs. Margaret Cunningham and Pamela.

Guests in the Richard Janssen home Sunday in honor of the birthdays of Mrs. Janssen and Becky were Mr. and Mrs. Elmer W. Smith, Hooper.

Sunday dinner guests in the Reynold Loberg home were Mr. and Mrs. Larry Coble, Lincoln, Mr. and Mrs. Harold Loberg and family and Mr. and Mrs. Ray Loberg and family, joining them in the afternoon were Mrs. Lizzie

Loberg, Wayne, and Alvin Young, Belden.  
Mr. and Mrs. Vernie Hurlbert and son took daughter, Mrs. Larry Palen and son to their home at Minot, N. D. last weekend.

Guests for a week in the Lynn Roberts home are Jack Great-house and Howard Dietzel, Drayton Plains, Mich.

## Society -

### Social Forecast

Sunday, Nov. 10  
Belles & Beaus Square Dance, Carroll, Harold Kemis, caller  
Monday, Nov. 11  
We Tu Club  
Tuesday, Nov. 12  
Hilltop Larks Club  
Wednesday, Nov. 13  
Lutheran Ladies Aid  
Thursday, Nov. 14  
Woman's Club  
Friday, Nov. 15  
Knitting Club, Mrs. Lynn Isom

Club Meeting held  
Way Out Here Club met Oct. 29 in the home of Mrs. Elwin Nelson with 10 members answering roll call, "One of the Nicest People I Have Ever Known." Mardelle Sypher was a guest. Mrs. Lester Menke and Mrs. Reynold Loberg received birthday gifts. Mrs. Jim Kavanaugh received a door prize. Cards

were played with prizes going to Mrs. Stan Hansen, Mrs. Ron Rhode and Mrs. Jim Bush. Nov. 26 meeting will be with Mrs. Merrill Baler.

**GST Meets**  
GST met Saturday with Mr. and Mrs. John Paulsen, with seven couples present. Prizes were won by Mr. and Mrs. Lynn Roberts and Mr. and Mrs. Robert Johnson. The December meeting will be with Mr. and Mrs. Robert Johnson.

**Knitting Club Meets**  
Knitting Club met Friday with Mrs. Henry Harmeler with eight members present. Prizes went to Mrs. Eunice Glass, high and Mrs. Max Stahl, low. Next meeting will be Nov. 15 with Mrs. Lynn Isom.

**Social Neighbors**  
Social Neighbors Club Card Party was held Saturday evening at the Ken Eddle home with five couples and Mr. and Mrs. Clarence Bolling, Wayne, present. Prizes went to Mr. and Mrs. Marvin Iaselhörst, Mr. and Mrs. Walt Retwisch and Mrs. Clarence Bolling.

**UNICEF Collection**  
Carroll UNICEF collection amounted to \$26.43. Sunday evening a Halloween hunt and supper was held for the Methodist Sunday School class with approximately 37 children and several mothers present.

**Party Held**  
Carroll Saddle Club held its first evening party at Carroll Auditorium Sunday with a no-host supper for approximately 80 present. Officers elected were Leroy Nelson, president; Gordon Davis, vice president; Mrs. Leroy Nelson, secretary and Mrs. Gordon Davis, treasurer. It was decided to hold parties Sunday evenings instead of Friday. Prizes were won by Mr. and Mrs. Ronald Kittle, Dean Danielson and Mrs. Hans Brogren. A Christmas party is planned Dec. 1.

On the candy committee will be Lonnie Fork, Mrs. Gordon Davis, Mrs. Jay Drake and Mrs. Julius Eckert; serving committee, Mrs. Jack Kavanaugh, Mrs. Bob Lilliard, Mrs. Harry Nelson and Mrs. Hans Brogren.

**SS Teachers Meet**  
St. Paul's Lutheran Sunday School teachers held a meeting Sunday afternoon with five teachers and Rev. Hilbert present. Secretary and teacher, Mrs. Wayland Zimmerman, was released as they have moved to Ponca. The SS superintendent will take charge until the vacancy is filled. Christmas gifts for children were discussed.

**Delta Dek Club**  
Delta Dek Bridge Club held a party Tuesday evening for members and their husbands in the Otto Wagner home with Mrs. Wagner, Mrs. Charles Whitney and Mrs. Clarence Woods as hostesses. Prizes were won by Mr. and Mrs. G. E. Jones, Joy Tuckler and Mrs. T. P. Roberts. Nov. 7 meeting will be with Mrs. Charles Whitney.

**Youth Rally Held**  
The Senior High of the Carroll congregation and the Presbyterian churches hosted a Youth Rally Oct. 20 with 60 young people from Norfolk, Hoskins, Winside, Carroll and Wayne attending. Seven area churches were represented. A banquet was served at 6 p.m. by Carroll mothers. Skits were presented by Hoskins and Winside groups. Mary Ellen Morris accompanied LeRee Jones who played a guitar. They sang two selections and led group singing. Rev. Robert Swanson, Carroll, also entertained the group with guitar numbers.  
Rev. Russell of Wayne Presbyterian church spoke to the group on his experiences as a



**HIGH SCHOOL FOR SALE?** Though possibly hoped for by students, Wayne's new high school building really isn't on the market! Mal-lowne funsters placed this commercial firm's sign on the school lawn late Thursday night, setting students to dreaming, and causing passersby to chuckle.

missionary in Venezuela. At the October meeting of the Senior High group of the Carroll Presbyterian and Congregational Churches the following officers were elected: president, Trilby Jones; vice president, LaBee Jones; secretary, Penny Rees and treasurer, Terry Roberts. There are 15 young people in this group. Sponsors are Mrs. Milton Owens and Mr. and Mrs. Stanley Morris.

Mr. and Mrs. Ken Eddle attended funeral services Tuesday at Butte for a cousin, 15-year-old Nancy Jo Williamson, daughter of Mr. and Mrs. Dwayne Williamson, Naper, who was accidentally shot in a hunting accident.

Mr. and Mrs. Ed Fork and Linda were among friends and relatives Tuesday evening to help Mrs. Wayne Thomas, Hoskins, celebrate her birthday.

Sandra Hansen, Omaha, spent the weekend with her parents, Mr. and Mrs. Martin Hansen. Mr. and Mrs. Martin Hansen and family were in the Louis Ambroz home Saturday evening to help them celebrate their wedding anniversary.

## Churches -

**Our Lady of Sorrows Church**  
(Alfred Moseke, pastor)  
Sunday, Nov. 10: Mass, 9 a.m.

**Presby-Congre. Church**  
(Gail Axen, pastor)  
Sunday, Nov. 10: Worship, 10 a.m.; Sunday school, 11.

**St. Paul's Lutheran Church**  
(H. M. Hilpert, pastor)  
Saturday, Nov. 9: Saturday school at Winside, 11-3:30 p.m.  
Sunday, Nov. 10: Worship, 8:45 a.m.; Sunday school, 9:40; Lutheran Layman's League, 7:30 p.m. Rev. H. M. Hilpert, host.  
Wednesday, Nov. 13: Ladies Aid and LWML, 2 p.m. and Walter League, 7:45.

**Methodist Church**  
(Robert Swanson, pastor)  
Sunday, Nov. 10: Worship, 9:30 a.m.; Sunday school, 10:30.

Sunday supper guests in the Arnold Junck home were Mr. and Mrs. Norman Hermank and Mr. and Mrs. Merle Brooks, Geddes, S. D., and Debbie Brandon.

Mr. and Mrs. Forrest Nettleton were Sunday supper guests in the Steve Nettleton home, Norfolk. They visited Mr. Nettleton who has been ill.

## Dixon County Courthouse Roundup

1969  
Lyle Armstrong, Ponca, Olds Harry J. Wendte, Newcastle, Fd Emerson High School, Emerson, Chev

1968  
Allan E. Bauman, Newcastle, Safeway Mobile Home Orville W. Conrad, Ponca, Chev Loren B. Book, Martinsburg, Fd Plup

1967  
Domar S. Knudson, Newcastle, Buick Wakefield Drug Co., Wakefield, Ford

1966  
Ira Schram, Newcastle, Flying L Trailer Corey E. Lorensen, Newcastle, Ford Trk

1965  
Emerson-Hubbard Community School, Emerson, International Travelall

1964  
Chester M. Benton, Waterbury, Chev Greg Schnasse, Wakefield, Chev Walt Johnson, Dixon, Fd Plup

1963  
Harvey Steecker, Emerson, Buick Alberta Meyers, Ponca, Ford Steve Fields, Ponca, Chevrolet

1962  
Pauline A. Tracy, Ponca, Ford 1959  
Wilma R. Dose, Emerson, Ford

Calif., 53, and Agnes Coon, Oakdale, Calif., 52.  
Kenneth Eugene Soden, Wayne, 21, and Lella Jane Carlson, Laurel, 23.  
Alan Ray Wehrlich, Hilton, Ia., 18, and Monica Jean Boyle, Newcastle, 20.

**COUNTY COURT:**  
Robert A. Hollman, Emerson, \$10 and costs, failure to stop at a stop sign.  
Norman Engdahl, Stanton, \$10 and costs, speeding.  
Clarence E. Hall, Hubbard, \$15 and costs, speeding.

**DISTRICT COURT:**  
William F. Conry, Plaintiff vs. Marvel Conry, Defendant. Plaintiff prays judgment against defendant for absolute divorce; that the separate real estate of the parties be assigned to them; that the personal property in possession of each of the parties be retained by them as their individual property and other relief.

## Leslie

**Party Held at School**  
Pupils of School District 25 enjoyed a Halloween costume party at the school Thursday afternoon. Brian Kai won the prize for the best costume. The pre-kindergarten children of the district were guests. Mrs. Delloyd Meyer, Mrs. Dale Krusemark, Mrs. Paul Henselcke and Mrs. Clark Kai served lunch.

Mr. and Mrs. Dick Breitkreutz and Brad, Wisner, were Sunday evening visitors in the Clifford Baker home.  
Mr. and Mrs. Terry Partling, Mr. and Mrs. Dallas Heckens and family and Mr. and Mrs. Jack Houswirth were Monday

evening guests in the Roger Hansen home. The occasion was in honor of Jack Houswirth who leaves this month to serve in the US Air Force.

## Churches -

**St. Paul's Lutheran Church**  
(E. A. Binger, pastor)  
Saturday, Nov. 9: Confirmation instruction, 8:45 a.m.  
Sunday, Nov. 10: Worship services, 9 a.m.; Sunday school, 10. Tuesday, Nov. 12: Men's Club, 8 p.m.  
Thursday, Nov. 14: Ladies Aid, 2 p.m.

Sunday dinner guests in the Wilbur Uecht home were Mr. and Mrs. Cecil Jacobsen and Terry, Fremont, and Robert Hansen and children.

Mrs. Ervin Botzger and Mrs. Jerry Anderson and Lori were in Norfolk last Monday where Mrs. Botzger attended a business meeting and Mrs. Anderson and Lori visited Mrs. Kerry Miller.

Mr. and Mrs. Jerry Anderson and Lori and Mrs. Ervin Botzger were Sunday afternoon guests in the Alvera Anderson home to help them observe their fifteenth wedding anniversary.  
Mr. and Mrs. Ed Krusemark

and family, Mr. and Mrs. Ervin Frey and Beverly, Mr. and Mrs. Don Brockman and family and Mr. and Mrs. Gilbert Krie, Laurel, were Sunday dinner guests in the Art Greve home in observance of Beverly Frey's birthday.

Harry Steinhoff and Noreen, Bancroft, were Sunday dinner guests in the Clark Kai home.  
Mr. and Mrs. Arvid Samuelson, Galen and Douglas, were with other relatives in the Walter Burhoop home, Bancroft, Wednesday night to observe the birthday of Mrs. Burhoop.

Mr. and Mrs. Dan Dolph and Lynelle were with a group of relatives and friends in the August Kai home Tuesday evening for the birthday observance of August Kai.

Neighbors of Mr. and Mrs. Roger Hansen came to their home Wednesday night for a housewarming. Guests were Mr. and Mrs. Walter Chinn, Mr. and Mrs. Wilbur Uecht, Mr. and Mrs. Norman Haglund and family, Mr. and Mrs. Alvin Ohlquist, Mr. and Mrs. Fred Uecht and Sam, Mr. and Mrs. Dennis Lutz, Mr. and Mrs. Russell Lindsay, Mr. and Mrs. Bruno Splittgerber and Mr. and Mrs. Louie Hansen and Mike.

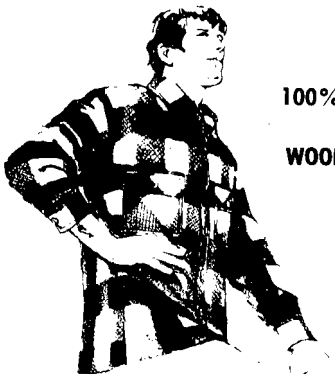
I WISH TO EXPRESS A SINCERE

# THANK YOU

To everyone who supported me in this past election.

GORDON NUERNBERGER

# C.P.O. Shirts



100% WOOL

Available in:

SOLID NAVY MELTON

ASSORTED WOOL PLAIDS

\$9.98 Each

"New C.P.O." look in new "in-n-outer" style. Long 30" length with shirt cuffs and straight bottom hem. Two-pocket style. An attractive "His-N-Her" garment. Sizes S-M-L.

— Downstairs Store —

# Larson's

DEPARTMENT STORE



## BLUE CHIP NEWS

BOB HOESING

1835 East Military      FREMONT, NEBR.  
Business Ph. 721-5245      Residence Ph. 721-1124

## KEOGH

DESIGNED FOR YOUNG WOMEN . . .

The Connecticut Mutual has a life insurance plan designed to meet your future financial wants.

For the woman who remains single - cash to start a business someday, to travel, or to build a retirement fund.

For the woman who marries - cash for emergencies, down payment on a home, or education for her children.

Our various life and endowment plans will help you accomplish these objectives. Let us send you our booklet, "Designed For Young Women."

The Connecticut Mutual Life Insurance Co.

The Blue Chip Company since 1846

# Announcing!

ALL-NEW

# Admiral Color TV

with exclusive

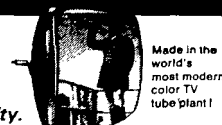
# 3-YEAR WARRANTY

on Color Picture Tubes

Admiral designed and built with bonded and etched safety glass.

PRECISION-CRAFTED!

for new peaks in performance and dependability.



Made in the world's most modern color TV tube plant!

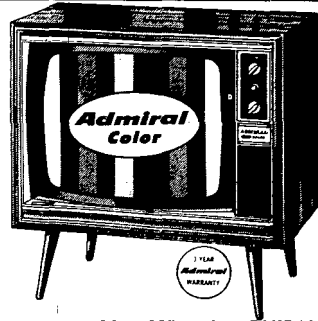
## READ THIS HISTORY-MAKING WARRANTY BEFORE YOU BUY!

### ADMIRAL COLOR TUBE WARRANTY

The picture tube in each new Admiral Color Television set is warranted to the original owner to be free from defects for 3 years after the date of purchase.

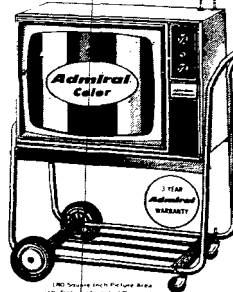
During this period, Admiral will supply a replacement tube in exchange for the defective tube without charge. Service and installation costs are to be paid by the owner. Provided an Admiral replacement tube is used, it will be warranted for the unexpired portion of the original 3 year warranty.

It is effective the warranty must be registered by mailing the warranty card accompanying the set to Admiral within 3 days after delivery.



Giant 295 sq. in. ADMIRAL Color TV with rectangular screen Biggest picture in Color TV (23" pic. meas. diag.)

**THE HARRISON**  
All-new, big-screen console in smart match-anything Contemporary styling. Handcrafted, walnut-grained finish on hardwood veneers. Exclusive Admiral Color Fidelity Control. Vivid, true-to-life color picture. "Super-Scope" VHF and solid state UHF tuners. Tint and Tone Controls. Model 2011C



Admiral portable Color TV with cart

The GREGORY. Fresh, dramatic styling! 3-yr. guarantee on tube! Lightweight, compact, ideal for families with limited space - or budget. Instant play. Beautiful Star Brown finish cabinet. Model C8005T

only \$359.95 Save \$50.00

Admiral. A NEW, ULTRA-HIGH STANDARD IN QUALITY AND RELIABILITY IN COLOR TV!

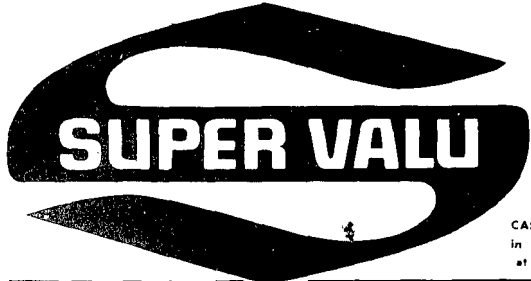
# SWANSON TV & Appl.

311 Main Street

Phone 375-3690

Wayne, Nebraska

- INSTANT CREDIT -



Prices Effective  
Wed., Nov. 6  
thru  
Sat., Nov. 9

CASH NIGHT Drawing  
in our store Thursday  
at 8 p.m. for \$250.00



Wow

# People Pleasin' PRODUCE SALE

GOLDEN YELLOW CHIQUITA

## BANANAS



10¢  
lb.

WE GIVE  
"J.W."  
GREEN STAMPS

RED RIVER VALLEY U.S. NO. 1 RED

## POTATOES



10 lb. bag 39¢

FRESH CRISP ICEBERG BUD BRAND

## LETTUCE

## 19¢

head



GARDEN FRESH

## CUCUMBERS

Each

## 9¢



FRESH VINE RIPE  
Tomatoes

each 7¢

OCEAN SPRAY FRESH  
Cranberries

1 lb. pkg. 29¢

U.S. NO. 1 RED JONATHAN

## APPLES

3 lb. bag

## 39¢

We Reserve the  
Right to  
Limit Quantities

MEDIUM YELLOW



## DRY ONIONS

## 29¢

3-lb. bag

FIRM AND HEAVY

## Fresh

pkg.

## TURNIPS

## 29¢



GARDEN FRESH

## GREEN BELL PEPPERS

Each

## 9¢

GARDEN FRESH

## GREEN ONIONS

## 9¢

bunch



Candy Stick  
FRESH, CRISP

## CELERY HEARTS

pkg.

## 29¢

Washington State  
FANCY GOLDEN  
DELICIOUS

3-lb. bag

## APPLES

## 59¢

SWEET AND TASTY

## Fresh

pkg.

## PARSNIPS

## 29¢

# \$1.79

## CANNED HAM

Hormel

1 1/2-lbs.  
Each



U.S.D.A. GRADE "A"

## FRYERS

## 29¢

LB.

Cut Up

## 33¢

LB.



Refreshing  
Cooling  
WHITE

lb.

## 19¢

Juicy Plump  
RED EMPEROR



## 19¢

lb.



JUICY RIPE

## D'Anjou PEARS

each  
(large  
size)

## 9¢

FIRM AND FRESH

## CARROTS

1-lb.  
pkg.

## 9¢

GARDEN FRESH

## RED RADISHES

pkg.

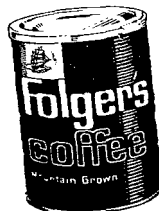
## 9¢



FOLGER'S

## COFFEE

REGULAR, DRIP OR PERC



## 3 \$1.93

Lb. can

BAKER'S

## CHOCOLATE CHIPS

12-oz. pkg.

## 43¢

WONDER PULL-APART

## OVEN BREAD

Reg. 39¢

## 33¢

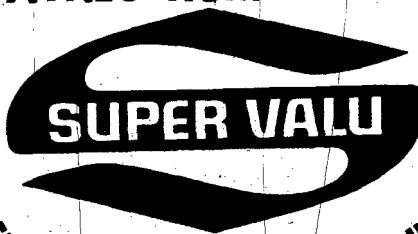
KARO IMITATION

## MAPLE SYRUP

32-oz. Bottle

## 43¢

WAYNE'S HOME OWNED



INDEPENDENTLY OWNED AND OPERATED SUPERMARKET

# EDITORIAL COMMENT

The editorial department of a weekly newspaper is an important department. Normally it is one person's opinion of topics that concern most of the readers.

You may not agree with an editorial — but if you read the editorial and give serious thought to the subject discussed you have gained. You, as a reader, have given careful thought to an important problem and the writer is proud to have called your attention to an important subject that you may have overlooked.

## Are You Getting the Most From Your Dollar?

- (Editor's Note: The following editorial appeared in the *Manawa* (Wisconsin) Advocate. It gets the message across so effectively, we think it merits reprinting.)
- Ever wonder just where that dollar spent out of town goes?
- I'll tell you where it doesn't go.
- It doesn't go to help pay for the new school.
- It doesn't go to help pay your city welfare.
- It doesn't go to help pay the cost of curb and gutter.
- It doesn't go to help pay for your police protection.
- It doesn't go to help pay for your fire department.
- It doesn't go to help pay for your children's Christmas party.
- It doesn't go to help pay for pretty city Christmas decorations.
- It doesn't go to help pay for new school buses.

- It doesn't go to help pay for the new youth center.
- It doesn't go to help pay for the new football jerseys.
- It doesn't go to help pay for getting and keeping good teachers.
- It doesn't go to help pay for your water and sewer.
- It doesn't go to help pay for the new bathing house.
- It doesn't go to help pay for the cost of your dump.
- It doesn't go to help pay the lifeguard for taking care of your children at the beach.
- It doesn't go to help pay the special classes for retarded children.
- It doesn't go to help pay the cost of maintaining a competent street department.
- It doesn't do a damn thing to help your city. Spend your dollar wisely — SHOP AT HOME — you will be surprised.

## Points to Ponder

Most Nebraska drivers are aware of the fact that the state has a point system law, however, few motorists remember the law's provisions. The following lists those provisions and points.

A licensed driver is given 12 points but may lose them, or a portion of them, if convicted of any of the following:

- Conviction of a felony in which a motor vehicle was used — lose 12 points.
- Third offense drunken driving, regardless of whether trial court found it to be third offense — lose 12 points.
- Third offense reckless driving or willful reckless driving — lose 12 points.
- Failure to stop and render aid — lose 12 points.

Driving under the influence of liquor or drug — lose 6 points.

Willful reckless driving — lost 6 points.

Negligent driving — lose 3 points.

Reckless driving — lose 5 points.

Speeding: 1 to 5 mph, lose 1 point; 5 to 11 mph, lose 2 points; 11 and over mph, lose 3 points.

All other traffic violations, except parking, mufflers and overloading trucks, lose 2 points.

An accumulation of 12 points in any two year period will cause automatic revocation of one's driver's license for one year.

If you are a licensed Nebraska driver, these points are well worth pondering. Driving is not a right but a privilege. — MMW.

## Take nique

Shoplifting, a sideline art of both amateur and professional thieves, continues to plague local businessmen. This annual problem tends to take on greater proportions as the calendar heads in toward the holiday season.

A brief survey of approximately twenty-five business houses in downtown Wayne reveals that though shoplifting increases as the customer traffic increases, the problem is actually one which lasts 365 days a year.

Ninety percent of the storekeepers said that as far as they can tell, most of their shoplifted losses are carried out of the store by those who are college age or younger, although there are adults seemingly also afflicted with kleptomania.

Connoisseurs of stealing will enter a business often in a group, and while one or two of them engage a clerk, or clerks, whichever the case may be, the remaining members of the group will help themselves. If an individual works alone, rather than in a group, he or she will likely use heavy clothing or a container of some type in which to hide the stolen merchandise.

Many times parents are not aware that their children have found a particular item in a store to be overly attractive resulting in the youngster taking it. What explanation the youth gives to his parents, if any, as to how or when he or she acquired the article is not known. In one case a store suspected a boy of having taken a transistor radio. Not long afterwards the lad's father was in the store wanting to purchase an earphone "for that transistor radio my boy bought in here the other day." No charges were filed for lack of evidence, but here is a case where evidently the lad had lied as to how he had obtained the radio.

Perhaps petty larceny seems to be insignificant, but once knowing that just grocery stores alone lose 180 million dollars a year through shoplifting, then one commences to understand the immensity of the problem.

Some shoplifters are kleptomaniacs. They are emotionally sick people who steal, not because they are poor, in fact many of them are well-to-do people, but they steal seemingly as an obsession.

Most communities have at least one or two individuals who are well known among businessmen as having to be constantly watched. When such a person is found with merchandise on their person without their having had any intention of paying for it, why doesn't the businessman prosecute? In a city, undoubtedly charges would be filed, but in a small community the whole affair would be a "bad" story, involving perhaps a \$1 or \$2 item. Leniency on the part of business people may be a contributing cause of continued "lifting" by a particular individual.

No one likes a thief. In fact, a thief certainly doesn't want another thief stealing from him! And whether one is stealing a small ring from the Five and Ten Store or whether carting off a huge missile, as did espionage agents in Europe recently, it all amounts to being a thief.

During the next two months in particular, there is sure to be a crackdown on shoplifters everywhere. If there are nine customers in a store and the tenth person shoplifts an item, then he brings suspicion on all. So, if you are shopping and believe you have observed a person stealing an item, don't feel in any way guilty about reporting it to the manager. It will help spotlight the guilty and lift the suspicion from the innocent. — MMW.

## Let Us Remember

Pause with me a few moments in an awesomely quiet section of our city; a section of town where our hearts often linger in memories; a place where the occupants dwell neither in riches or poverty, and the volume of the city's noise at the gate makes no disturbance.

Perhaps cemeteries are not given their just portion of notice. Stand with me in the midst of Wayne's "silent city" a few moments, out here at the west edge of town, and perhaps we'll leave these acres of mystery a bit the wiser.

If one will listen ever so closely while passing through the streets aligned with marble, granite and stone, there is an extra-sensory perception available to the human ear which makes it possible to hear seldom listened-to voices.

There! Did you hear that? The unmistakably clear voices of the early settlers whose raw courage and unending bravery lead them across plains naked of civilization except for the occasional village of red men. The echo of their fortitude and self-reliance, based on pure faith, still whispers into our 21st century ears.

A drum roll! And listen to the triumphant blast of the bugle! These sounds roll in heavily across the grass carpet upon which unseen marching feet keep rhythm with the centuries. The ever-present memory of the war dead moves in on the quiet feet of time, blanketing the area with the vibrant spirit of heroism while in the time of national danger. Their voices remain our companion.

We speak as we walk and let them know that we shall never forget here what their valor and sacrifices accomplished "out there" on many a bomb-bitten battlefield.

Many are the intersections in this corner of our community, although conspicuous by their

absence are traffic lights, jangling phones and door-bells, voices of salesmen, and the ever increasing duet with the clock and calendar! Distressed nerves and the burdens of labor are all absent from this portion of our town where Yesterday has retired.

Sprinting veterles of Yesteryear's wisdom inform us there is no racial prejudice, no economic snobbery, no gossiping or jealousy, no crime or courts in this small marble city of tombstones.

Might the 4,200 of us, the living, listen carefully to the buried library of experienced voices so nearby? Could they speak words of caution, would they advise all to slow daily schedules just a trifle, enough so as to provide important minutes to spend with the family, friends and neighbors?

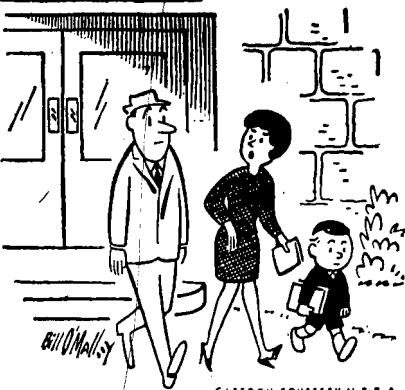
Could one step for a moment through the veil of time on Veteran's Day, and converse with those thousands of youth who have made the sacrifice of life itself in behalf of their country, what advice would he hear?

Would those gallant men, whose heroic actions brought the US victories on every war front, understand why we continue to trade with the nation responsible for killing our youth in Vietnam? Would their young voices ask why there seems to be so much indifference and lack of concern in regard to rescuing the neighborhood boy and his fellowmen captured, along with his ship, Pueblo? What would you answer?

Would a WWII soldier, back from the dead, understand such terms as "bombing halt," "negotiation," and "demonstrated zone"?

Let each American pause Nov. 11 and carefully ponder the question beside some veteran's grave, "Is my home as brave and free, as that man hoped it would be, when he sacrificed his life for me?" — MMW.

# SCHOOL



"WONDER WHAT SHE MEANT WHEN SHE SAID, 'NOW THAT I'VE MET BETS' FOLKS I CAN UNDERSTAND HIS PROBLEM MUCH BETTER,'"

## Capital News

# Nebraska Asks Permission To Build N-S Interstate

LINCOLN — Nebraska is asking the federal government for permission to construct a north-south interstate highway.

The State Highway Advisory Commission has joined in what is expected to be a chorus of complaints about a proposed federal regulation which would allow opponents to tie up road projects to the work for many months.

The regulation has been drafted by Federal Highway Administrator Lowell K. Bridwell. If he decides to adopt it officially, it would have the force of law and only congress could change it.

Under the proposal, individual protesters could appeal highway routes, specifications or designs to Washington and, if they still were not satisfied, to the courts.

The commission has voted to urge Bridwell not to promulgate the regulation and to ask Nebraska's congressional delegation to join in the protest.

The Nebraskans complain that the proposal would erode traditional state control over highway projects.

Tiemann to be Spectator

Gov. Norbert T. Tiemann has instituted a policy of sitting in on meetings of the Highway Advisory Commission.

The governor said he does not intend to participate in the meetings extensively, but he thinks it is a good way to be kept up to date on highway matters.

If he can't make the meetings personally, Tiemann said, he will send his administrative assistant, Larry C. Johns, 100 Bills Expected

All the recommendations proposed by the governor's Little Hoover Commission are expected to be offered as legislation to the 1969 Unicameral.

Officials of the commission — formally known as the Nebraska Management Study Analysis Committee — say it may require at least 100 individual bills to encompass all the recommendations.

The most controversial proposals involve the appointment — instead of election — of the secretary of state, auditor, treasurer and attorney general.

According to the Hoover report, the governor should have the authority to appoint all but the auditor and he should serve under legislative appointment.

State Auditor Ray C. Johnson has not commented on the Hoover recommendation, but Secretary of State Frank Marsh, Treasurer Wayne R. Swanson and Attorney General Clarence Meyer have objected strenuously.

The Hoover report also suggests that the Board of Regents be appointed, rather than elected.

Lincoln — Nebraska is asking the federal government for permission to construct a north-south interstate highway.

The State Highway Advisory Commission has joined in what is expected to be a chorus of complaints about a proposed federal regulation which would allow opponents to tie up road projects to the work for many months.

The regulation has been drafted by Federal Highway Administrator Lowell K. Bridwell. If he decides to adopt it officially, it would have the force of law and only congress could change it.

Under the proposal, individual protesters could appeal highway routes, specifications or designs to Washington and, if they still were not satisfied, to the courts.

The commission has voted to urge Bridwell not to promulgate the regulation and to ask Nebraska's congressional delegation to join in the protest.

The Nebraskans complain that the proposal would erode traditional state control over highway projects.

Tiemann to be Spectator

Gov. Norbert T. Tiemann has instituted a policy of sitting in on meetings of the Highway Advisory Commission.

The governor said he does not intend to participate in the meetings extensively, but he thinks it is a good way to be kept up to date on highway matters.

If he can't make the meetings personally, Tiemann said, he will send his administrative assistant, Larry C. Johns, 100 Bills Expected

All the recommendations proposed by the governor's Little Hoover Commission are expected to be offered as legislation to the 1969 Unicameral.

Officials of the commission — formally known as the Nebraska Management Study Analysis Committee — say it may require at least 100 individual bills to encompass all the recommendations.

The most controversial proposals involve the appointment — instead of election — of the secretary of state, auditor, treasurer and attorney general.

According to the Hoover report, the governor should have the authority to appoint all but the auditor and he should serve under legislative appointment.

State Auditor Ray C. Johnson has not commented on the Hoover recommendation, but Secretary of State Frank Marsh, Treasurer Wayne R. Swanson and Attorney General Clarence Meyer have objected strenuously.

The Hoover report also suggests that the Board of Regents be appointed, rather than elected.

Lincoln — Nebraska is asking the federal government for permission to construct a north-south interstate highway.

The State Highway Advisory Commission has joined in what is expected to be a chorus of complaints about a proposed federal regulation which would allow opponents to tie up road projects to the work for many months.

The regulation has been drafted by Federal Highway Administrator Lowell K. Bridwell. If he decides to adopt it officially, it would have the force of law and only congress could change it.

Under the proposal, individual protesters could appeal highway routes, specifications or designs to Washington and, if they still were not satisfied, to the courts.

The commission has voted to urge Bridwell not to promulgate the regulation and to ask Nebraska's congressional delegation to join in the protest.

The Nebraskans complain that the proposal would erode traditional state control over highway projects.

Tiemann to be Spectator

Gov. Norbert T. Tiemann has instituted a policy of sitting in on meetings of the Highway Advisory Commission.

The governor said he does not intend to participate in the meetings extensively, but he thinks it is a good way to be kept up to date on highway matters.

If he can't make the meetings personally, Tiemann said, he will send his administrative assistant, Larry C. Johns, 100 Bills Expected

All the recommendations proposed by the governor's Little Hoover Commission are expected to be offered as legislation to the 1969 Unicameral.

Officials of the commission — formally known as the Nebraska Management Study Analysis Committee — say it may require at least 100 individual bills to encompass all the recommendations.

The most controversial proposals involve the appointment — instead of election — of the secretary of state, auditor, treasurer and attorney general.

According to the Hoover report, the governor should have the authority to appoint all but the auditor and he should serve under legislative appointment.

State Auditor Ray C. Johnson has not commented on the Hoover recommendation, but Secretary of State Frank Marsh, Treasurer Wayne R. Swanson and Attorney General Clarence Meyer have objected strenuously.

The Hoover report also suggests that the Board of Regents be appointed, rather than elected.

Lincoln — Nebraska is asking the federal government for permission to construct a north-south interstate highway.

The State Highway Advisory Commission has joined in what is expected to be a chorus of complaints about a proposed federal regulation which would allow opponents to tie up road projects to the work for many months.

The regulation has been drafted by Federal Highway Administrator Lowell K. Bridwell. If he decides to adopt it officially, it would have the force of law and only congress could change it.

Under the proposal, individual protesters could appeal highway routes, specifications or designs to Washington and, if they still were not satisfied, to the courts.

The commission has voted to urge Bridwell not to promulgate the regulation and to ask Nebraska's congressional delegation to join in the protest.

The Nebraskans complain that the proposal would erode traditional state control over highway projects.

Tiemann to be Spectator

Gov. Norbert T. Tiemann has instituted a policy of sitting in on meetings of the Highway Advisory Commission.

The governor said he does not intend to participate in the meetings extensively, but he thinks it is a good way to be kept up to date on highway matters.

If he can't make the meetings personally, Tiemann said, he will send his administrative assistant, Larry C. Johns, 100 Bills Expected

All the recommendations proposed by the governor's Little Hoover Commission are expected to be offered as legislation to the 1969 Unicameral.

Officials of the commission — formally known as the Nebraska Management Study Analysis Committee — say it may require at least 100 individual bills to encompass all the recommendations.

The most controversial proposals involve the appointment — instead of election — of the secretary of state, auditor, treasurer and attorney general.

According to the Hoover report, the governor should have the authority to appoint all but the auditor and he should serve under legislative appointment.

State Auditor Ray C. Johnson has not commented on the Hoover recommendation, but Secretary of State Frank Marsh, Treasurer Wayne R. Swanson and Attorney General Clarence Meyer have objected strenuously.

The Hoover report also suggests that the Board of Regents be appointed, rather than elected.

Lincoln — Nebraska is asking the federal government for permission to construct a north-south interstate highway.

The State Highway Advisory Commission has joined in what is expected to be a chorus of complaints about a proposed federal regulation which would allow opponents to tie up road projects to the work for many months.

The regulation has been drafted by Federal Highway Administrator Lowell K. Bridwell. If he decides to adopt it officially, it would have the force of law and only congress could change it.

Under the proposal, individual protesters could appeal highway routes, specifications or designs to Washington and, if they still were not satisfied, to the courts.

The commission has voted to urge Bridwell not to promulgate the regulation and to ask Nebraska's congressional delegation to join in the protest.

The Nebraskans complain that the proposal would erode traditional state control over highway projects.

Tiemann to be Spectator

Gov. Norbert T. Tiemann has instituted a policy of sitting in on meetings of the Highway Advisory Commission.

The governor said he does not intend to participate in the meetings extensively, but he thinks it is a good way to be kept up to date on highway matters.

If he can't make the meetings personally, Tiemann said, he will send his administrative assistant, Larry C. Johns, 100 Bills Expected

All the recommendations proposed by the governor's Little Hoover Commission are expected to be offered as legislation to the 1969 Unicameral.

Officials of the commission — formally known as the Nebraska Management Study Analysis Committee — say it may require at least 100 individual bills to encompass all the recommendations.

The most controversial proposals involve the appointment — instead of election — of the secretary of state, auditor, treasurer and attorney general.

According to the Hoover report, the governor should have the authority to appoint all but the auditor and he should serve under legislative appointment.

State Auditor Ray C. Johnson has not commented on the Hoover recommendation, but Secretary of State Frank Marsh, Treasurer Wayne R. Swanson and Attorney General Clarence Meyer have objected strenuously.

The Hoover report also suggests that the Board of Regents be appointed, rather than elected.

# Way Back When



## 10 Years Ago

November 6, 1958: Members of Wayne's newly-organized teenage car club, "The Drivers," will meet Wednesday at the fire hall to discuss the organization's constitution and by-laws... Duane Fitch, Wayne, was elected president at the Northeast District Lutheran League rally held last Sunday at Redeemer Lutheran Church... The nationally-known Jimmy Dorsey orchestra, now directed by Lee Castle, will be in Wayne next Thursday to help WSTC initiate its new John D. Rice Memorial Auditorium... Martin Polhemus, Wayne, was elected to the board of directors and executive committee of the Nebraska American Cancer Society at the annual meeting recently in Omaha.

## 15 Years Ago

November 5, 1953: Felber Pharmacy will hold an open house Friday, Walden Felber announced Wednesday... County Agent Harold Ingalls turned trapper Tuesday morning. A raccoon was discovered in a tree on the courthouse lawn and Harold was delegated to catching the ringtail. He finally accomplished the task after Sheriff Hans Tietzen furnished a rope and sack... Price of Herveale, a summer yearling Polled Hereford from Herveale Farms, Wayne, was named reserve champion of the Grand National Livestock exposition Monday at San Francisco.

forms. Costs may vary with the season and supply. Canned and frozen peas and spinach, frozen orange juice and instant coffee are usually less expensive in convenience form. Carrots, broccoli, coconut, beef patties, peas and dinners, and yeast rolls are more expensive in convenience form. Remember that prices increase with each added processing step.

There are usually differences in quality between the convenience forms and the fresh or home-prepared counterparts. You must decide which products are acceptable for your family and whether convenience or quality is more important. The nutritive value of processed foods is often lower.

Convenience foods often save energy by minimizing preparation and clean-up.

November 11-16 is Consumer Education Week. Observe the week by checking if you are a wise consumer of convenience foods.

Ag Research Yearbook

How our food, clothing and shelter are constantly being improved through agricultural research is told in "Science for Better Living" the 1968 Yearbook of Agriculture, published Oct. 20 by the U.S. Department of Agriculture.

The Yearbook's preface points out that everyone benefits in their daily lives from agricultural research "because it improves the meals we eat, the clothes we wear, our water and air, the wood we build much of our homes with and the plants and trees that make our surroundings more livable."

Research developments the book reports on include oblong tomatoes to cut tomato harvesting costs, growing a "forest" in three years, use of plants as air pollution detectors, new techniques in frozen foods, effective methods for stopping crabgrass, improved cotton seersucker, better ornaments for homeowners and a new local cheese. One of the book's chapters tells how space satellites may help farmers of the future.

Dramatic, readable case his-

tor in preparation for a windbreak planting this year, but usually fall ground preparation is better than springtime preparation.

Another consideration in establishing a windbreak is that broadleaved trees shed their leaves in winter while evergreens do not. In addition, if you are contemplating what type of trees you want in a good windbreak, you might consider the fact that once established, evergreens live far longer than most of our broadleaved trees. Potential loss of broadleaved trees by herbicide sprays also is a consideration.

## County Agent's Column

by Harold Ingalls

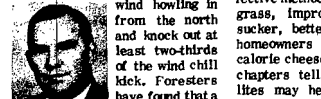
Windbreaks

Evergreen trees in a windbreak can hold back as much as 90 per cent of that bitter winter wind howling in from the north and knock out at least two-thirds of the wind chill kick. Foresters have found that a good three-row evergreen windbreak of 25-foot trees can reduce the velocity of a 10 mph wind by 80 per cent at a 75 foot distance on the protected side of the windbreak.

This means that if the wind is blowing 10 mph when the temperature is 10 degrees below zero, a good evergreen windbreak will cut the chill factor from 33 degrees below zero to 12 degrees below zero or reduce 21 degrees in chill factor.

A good windbreak system can lessen much of the discomforts of a Nebraska winter. A large part of a good windbreak system should be made up of evergreen species — red cedar and Austrian Ponderosa or Scotch Pine. Three-fourths of all trees planted for windbreak purposes in Nebraska are evergreens.

Moisture is not a critical fac-



tor in preparation for a windbreak planting this year, but usually fall ground preparation is better than springtime preparation.

Another consideration in establishing a windbreak is that broadleaved trees shed their leaves in winter while evergreens do not. In addition, if you are contemplating what type of trees you want in a good windbreak, you might consider the fact that once established, evergreens live far longer than most of our broadleaved trees. Potential loss of broadleaved trees by herbicide sprays also is a consideration.

## Northeast Extension Notes

by Janet Schmeckle

Convenience Foods

Convenience foods are partially or fully prepared foods such as cakes, breads, jellies, puddings and sauces. Canned and frozen fruits and vegetables are common convenience foods.

When deciding how frequently you want to use convenience foods consider time, cost and quality.

Time saved is an important factor in choosing convenience foods. Estimate the value of your time to determine if the fresh or home prepared is actually less expensive.

Convenience foods may cost less, about the same or more. Compare the costs of the various

New 1969 ACCO SEED varieties for your fields

LOIS LUTT

Ph. 373-3217 917 Walnut

## 20 Years Ago

November 4, 1948: Sheriff Hans Tietzen and city authorities are investigating a series of Halloween pranks which resulted in damage to more than 15 cars over the weekend... Members of the Wayne chapter of Eastern Star were guests at a service in Wakefield Tuesday evening when Mrs. George Aitrope was awarded the 50-year pin. Mrs. Aitrope was voted in November, 1988 and initiated the following December... Mr. and Mrs. Carl Meyer have moved into the basement of their new house just across the street from their former residence, at 120 West Ninth Street.

## 25 Years Ago

November 4, 1943: Lt. Burdette Nygrus, now home on 20 day's leave from the Mediterranean battle area, earned 10 citations, the air medal and nine clusters, for special duty as fighter pilot in five campaigns, those of Tunisia, Pantellaria, Sardinia, Sicily and Italy... Women of all Wayne churches unite in an Armistice Day service, Thursday, Nov. 11, at 2 o'clock at the Presbyterian Church.

## 30 Years Ago

November 10, 1938: Burrell Hughes of the seventh grade received three merit badges from the scout executives in Omaha Tuesday morning... Mrs. W. W. Roe is suffering from an infection in her hand caused by a sand burr... Gubavere Arnold and Alice Hanson were chosen cheerleaders of the Concord pep club... Earl Marchant bought the interest of his partner, B. F. Strahan, in the oil station here... Mr. and Mrs. W. F. Mahany of Jefferson, La., presented a bronze plaque bearing the American's creed to the teachers college at convocation Tuesday morning.

ories of research achievements are featured in the Yearbook, which is designed to help farmers, suburbanites, city dwellers and students. The bulk of the chapters in the 432 page book are written by scientists who work in laboratories at USDA and other Federal and State agencies, at universities, or in private industry. There are over 250 photographs, including a color section with 53 photos.

"Scientists come to life in these pages," the preface notes. "Dr. Keith E. Gregory, (director of the US Meat Animal Research Center, at Clay Center) pioneers crossbreeding in beef production. Most of the research developments described in the Yearbook took place in the last five years or so, but a few older landmark achievements are included.

Senators and Congressmen have limited numbers of copies of the Yearbook for free distribution to constituents. Or, copies of "Science for Better Living," the 1968 Yearbook of Agriculture, may also be obtained for \$3 each from the Superintendent of Documents, Government Printing Office, Washington, D. C., 20402. USDA has no copies of the Yearbook for public distribution or sale.

Read and Use The Wayne Herald Want Ads

I. B. P. CATTLE BUYER

Gerald Jackson

375-1216 - Wayne, Nebr.

IT'LL PAY YOU TO DRIVE TO NORFOLK

For quality eyewear from Duling Optical

- TOP QUALITY FRAMES AND LENSES
- CUSTOMER SATISFACTION
- WIDE ASSORTMENT OF FASHIONABLE FRAME STYLES
- AND BEST OF ALL REASONABLE DOWN-TO-EARTH PRICES!

Ask us about CONTACT LENSES ONLY \$11.50 (Includes frame and lens)

Be Smart... Go To Duling DULING OPTICAL You look better

308 Norfolk Avenue - Norfolk, Nebraska

# With 57 grandchildren— Room's A Problem at Hanson Reunion

Mr. and Mrs. Paul Hanson of Concord don't have a family reunion very often—there's no place in Concord large enough. The Hansons must hold some sort of record for Concord and possibly for a large part of Nebraska—they have 57 grandchildren.

You get 57 grandchildren in one place and you're going to be pressed for space. And along with the record must go a great deal of joy and satisfaction.

Paul Hanson, a life-long resident of the Concord area except for a few years spent in South Dakota and Montana, has twelve children, eight by his first wife, Rhoda, who died in 1924, and four by his second wife, Thelma.

Nine of the 57 grandchildren were adopted by two sons. One son has six children, all adopted.

Phyllis, Richard, Winifred and Roy still live near Concord, but the other children are scattered across the nation. Dora lives in



YOUNGEST OF 57 GRANDCHILDREN sits on the knee of her grandfather, Monica Hanson, two years old, is the fifty-seventh grandchild of Mr. and Mrs. Paul Hanson of Concord. She is the daughter of Mr. and Mrs. Roy Hanson of Concord.

Warner Robbins, Ga., John in Pierre, S. D., Robert in Big Timber, Mont., Alice in Oak Harbor, Wash., Edgar in Santa Rosa, Calif., Charles in Omaha, Raymond in Sudan, Tex., and Roger in Council Bluffs.

Paul Hanson attributes his long life (he's 81 years old) and his many grandchildren to 'good health'. "The best way to stay healthy is to go to bed early and get up at sunrise," Hanson commented. He is also proud of never having drunk (except for a sip when he was younger) or smoked (except for a few corn silk cigarettes many years ago).

A man with several hair-raising experiences earlier in his life, Hanson likes to tell his friends about the time he and a Bohemian had something of a feud going on in South Dakota.

The Bohemian, who earlier had lived near Bloomfield, one time threatened to shoot Hanson for bothering his cattle after they got into Hanson's crops. Hanson

thinks the Bohemian turned the cattle into his crops on purpose. Another time the man accused Hanson of taking his sow and four pigs. Hanson showed him all over his farm and then asked the man if he still thought he had stolen them. "After hearing his answer, I'm sure he thought I had them hidden in the house!"

He also likes to tell friends about the time a group of men from Concord tried to steal his father's watermelons. They crossed a creek and crept up to the patch when all of a sudden a gun went off. One man, dressed in his Sunday best, waded across the creek and took off running, thinking it was old man Hanson coming after them with a shotgun. Actually, a young Concord boy heard of their plan and did it to scare them.

Later the editor of the Concord News said the one man ran up a corn row so fast he caught up with a jack rabbit, kicked it in the behind and told it to get out of his way. Hanson kind of doubts the truth of that story.

Born March 28, 1887, Hanson has farmed near Concord most of his life. He moved to Gregory, S. D., in 1916 and worked there until early in 1919 when he went to Montana. He returned to South Dakota in 1921 and lived there until 1931 when he returned to Concord.

He says he hasn't really stopped farming yet since he still helps his sons with their cattle feeding and still buys a lot of cattle for them.

It was not until the early 1940's that Hanson found out he wasn't born in Dixon County as he has always thought. A man by the name of Frank Griffith told Hanson he had been born on a farm about four miles north and one west of Wayne. Griffith had lived next to Hanson's father when he was born.

Hanson himself comes from a large family. He had five other brothers and two sisters. One brother, Ellery, lives in Montana and another brother, Dean, lives near Concord. His other brothers and sisters are dead.

Hanson says he has a hard time remembering how many grandchildren he has. But it took him no time at all to name each son and daughter and the number of children they have.

He did make one mistake, but his daughter-in-law, Mrs. Roy Hanson of Concord, was there to help.

## CONCORD NEWS

Mrs. Jerry Allvin—Phone 584-2440

Guests in the Ervin Kraemer home Sunday evening to observe Rich's birthday were Jerry Warner, Marlen Kraemer and Rich Gensler.

Mr. and Mrs. R. H. West and family, Stanton, were Saturday overnight guests in the George Voller's home. Sunday the West family were guests in the Carroll Addison home, Coleridge.

Mr. and Mrs. Marino Wallin, Glenwood, Miss., were overnight guests of Mrs. Ruth Wallin. Sunday they were joined by Mr. and Mrs. Allen Johnson, Omaha, and Mr. and Mrs. Weston Wallin and family in the Wallace Magnuson home for dinner Sunday.

### Society -

**Olson Baby Baptized**  
Douglas Scott Olson, son of Mr. and Mrs. Arden Olson, was baptized Sunday, Oct. 27 at Redeemer Lutheran Church, Wayne. Sponsors were his uncles, David Olson and Dean Brudigan. Guests for dinner in the Olson home were Mr. and Mrs. Kenneth Olson and David, Concord, Marvin Brudigan and Lee, Wakefield, and Mr. and Mrs. Dean Brudigan, Pilger.

**Couples Meet**  
St. Paul's Lutheran Churches Married Couples met Sunday evening at the church. Mr. and Mrs. Leroy Koch were hosts.

**Attend Meeting**  
Mrs. Clarence Dahlquist, Mrs. Ray Dieck, Mrs. Adolph Blohm, and Mrs. Don Arduser attended the Gideon Auxiliary meeting at Wausa Saturday. Mrs. Hanquist, Polk, was guest speaker.

**Bon Tempo Club Meets**  
Bon Tempo Bridge club met Wednesday with Mrs. Arnold Witt. Mrs. Rudolph Blohm and Mrs. Clarence Rastede had high scores. Next meeting is Nov. 6 with Mrs. Clarence Rastede.

**Attend Meeting**  
Mr. and Mrs. Ervin Kraemer of St. Paul's Lutheran, Concord, and Jack Erwin of Immanuel Lutheran at Laurel attended the first meeting of Camp Lutheran in Immanuel Lutheran Church at Columbus Wednesday.

**Clothing Drive Set**  
Again this year Lutheran World Relief will participate in the annual clothing drive. Last year some 750 pounds of used clothing was contributed by members of the Concord-Allen parish to give aid to less fortunate people around the world. Clothing can be brought to the churches any time during the month of November. During Thanksgiving weekend it will be taken to Sioux City for loading.

Mr. and Mrs. Verl Dean Carlson entertained at supper Friday evening in observance of Mrs.

Carlson's birthday. Guests were Mr. and Mrs. Bert Peterson and family, Mr. and Mrs. Clayton Anderson and family, Mr. and Mrs. Milt Ober and family, Wausa. Mrs. Marlen Johnson and Layne, Kay Anderson, Mrs. Jim Kirchner and daughters and Mrs. Herman Kraemer were guests of Mrs. Carlson Saturday. Monday afternoon guests for the same occasion were Mrs. Vern Carlson and Mrs. Mike Hewinkle and Doug.

Mr. and Mrs. Fritz Kraemer and family, Mr. and Mrs. Verl Dean Carlson and family, Concord, Mr. and Mrs. Delmar Carlson, Wayne, and Mr. and Mrs. George Farley and Uricka Swanson, Omaha, were Sunday dinner guests in the Arnold Edmiston home, Omaha.

Kathryn Carlson visited friends in Omaha last weekend. Mrs. Deo Isom and Mrs. Noel Isom, Dixon, returned Saturday after visiting relatives in Dallas, Tex. Mrs. Grace Paulsen, Hyattsville, Md., came Wednesday evening for an extended visit with Mrs. Edna Olson.

Mr. and Mrs. Kenneth Klausen were weekend guests in the DeWayne Klausen and Harold Johnson homes, Millard.

Janet Erwin, Norfolk, and Clayton Erwin, Concordia College, Seward, spent last weekend with their parents, Mr. and Mrs. Jack Erwin.

Mr. and Mrs. Patrick Evert, Fremont, were weekend guests in the Jim Clarkson home. Mrs. Leonard Clarkson and Kelly and Johnny and Danny Feldns, Hartington, visited Sunday and Robert

Clarkson, Fremont, spent Tuesday and Wednesday in the Clarkson home. All were visiting with Francis Clarkson who is home on leave from the Army before going to Vietnam.

Mr. and Mrs. Arvid Peterson and Mr. and Mrs. Burnell Stone were guests Sunday afternoon in the Charles Kardell home to observe the host's birthday. Harris Dahlquist visited in the home of his brother, Dr. and Mrs. Larue Dahlquist, Pipestone, Minn., last weekend.

### Churches -

Concordia Lutheran Church (John C. Frandsen, pastor) Thursday, Nov. 7: L.C.W. Circles, 1, 2, 3 and 4 at 2 p.m.; bowling, 8.

Saturday, Nov. 9: Confirmation classes, 9:30 a.m.; Junior mission, 2 p.m.

Sunday, Nov. 10: Sunday school, 9:45 a.m.; morning worship, 11; Couples League, 8 p.m.

Monday, Nov. 11: Northeast Nebr. Family and Committee Council, 7:30 p.m.

Tuesday, Nov. 12: Directory Proofs at Allen, 2-6 p.m.

Wednesday, Nov. 13: Choir rehearsal, 8 p.m.

Evangelical Free Church (Melvin Loge, pastor)

Sunday, Nov. 10: Sunday school, 10 a.m.; morning worship, 11; evening services, 7:30 p.m.

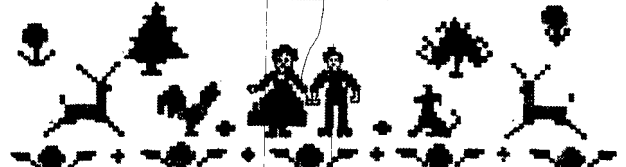
Wednesday, Nov. 13: Evening service, 7:30 p.m.

Mr. and Mrs. Oscar Pearson, South Sioux City, were guests of Clara Johnson Saturday afternoon.

Mr. and Mrs. Charles Clark, Timmie and Kelly, Cherokee, Ia., were weekend guests in the Ivan Clark home.

Look at what we've got for You.

Bless this house, Oh Lord, we pray  
Make it safe by night and day.



JANUARY	FEBRUARY	MARCH	APRIL
S M T W T F S	S M T W T F S	S M T W T F S	S M T W T F S
1 2 3 4	1 2 3 4 5 6	1 2 3 4 5 6 7	1 2 3 4 5
5 6 7 8 9 10 11	7 8 9 10 11 12 13	8 9 10 11 12 13 14	6 7 8 9 10 11 12
12 13 14 15 16 17 18	14 15 16 17 18 19 20	15 16 17 18 19 20 21	13 14 15 16 17 18 19
19 20 21 22 23 24 25	16 17 18 19 20 21 22	16 17 18 19 20 21 22	20 21 22 23 24 25 26
26 27 28 29 30 31	23 24 25 26 27 28	23 24 25 26 27 28 29	27 28 29 30
	30 31	30 31	
MAY	JUNE	JULY	AUGUST
S M T W T F S	S M T W T F S	S M T W T F S	S M T W T F S
1 2 3 4 5	1 2 3 4 5 6	1 2 3 4 5	1 2 3 4 5
6 7 8 9 10 11 12	7 8 9 10 11 12 13	6 7 8 9 10 11 12	6 7 8 9 10 11 12
13 14 15 16 17 18 19	14 15 16 17 18 19 20	13 14 15 16 17 18 19	13 14 15 16 17 18 19
20 21 22 23 24 25 26	21 22 23 24 25 26 27	20 21 22 23 24 25 26	20 21 22 23 24 25 26
27 28 29 30 31	28 29 30 31	27 28 29 30 31	27 28 29 30 31
SEPTEMBER	OCTOBER	NOVEMBER	DECEMBER
S M T W T F S	S M T W T F S	S M T W T F S	S M T W T F S
1 2 3 4 5 6	1 2 3 4	1 2 3 4 5 6 7	1 2 3 4 5
7 8 9 10 11 12 13	5 6 7 8 9 10 11	8 9 10 11 12 13 14	6 7 8 9 10 11 12
14 15 16 17 18 19 20	12 13 14 15 16 17 18	10 11 12 13 14 15	14 15 16 17 18 19 20
21 22 23 24 25 26 27	19 20 21 22 23 24 25	17 18 19 20 21 22	21 22 23 24 25 26 27
28 29 30	26 27 28 29 30 31	24 25 26 27 28 29	28 29 30 31

1969

TOWEL MEASURES 16 x 28 INCHES

This lovely linen calendar towel your GIFT when you join our new

**Christmas Club**  
**The State National Bank**  
and TRUST COMPANY

MEMBER F.D.I.C.

### 4-H Club News

Gingham Gals 4-H met Oct. 14 to reorganize. About 25 girls showed interest in joining. Projects available were discussed. Carol Kumm, Jannice Zublis and Virginia Roberts entertained and served refreshments. The next meeting will be at Mrs. Delbert Roberts' home in Wayne on Monday evening at 7 p.m. On the program is the election of officers. Shirley Petersen, news reporter.

Read and Use The Wayne Herald Want Ads



## Jean-Claude Killy talks shop... Chevrolet Sports Shop

(Freely translated from the French) "I am a man who drives for sport... for fun, you know? This is why I am telling you about the brave new Chevrolet and its Sports Shop. "Only in the Chevrolet Sports Shop do you find cars like the Camaro Z/28. Ah, the Z/28. Camaro with 302 V8, more muscular suspension and Hurst shifter. Only Z/28 offers 4-wheel disc brakes like Corvette, also in the Sports Shop. "You will find, too, the Camaro SS, Chevelle SS 396, Nova SS and the big Impala SS 427. "The Sports Shop. Part of the Sports Department at your Chevrolet dealer's. "But of course."

Putting you first, keeps us first.



Jean-Claude Killy, winner of three gold medals in the 1968 Winter Olympics.

See the Super Sports at your Chevrolet dealer's Sports Department now.

'69 Camaro Z/28

**Cars, Trucks Registered**

1969  
Thomas Addison, Wayne, Olds  
Donald E. Harmer, Carroll, Buick  
Forrest Magnuson, Wayne, Pont  
Bill Fenske, Hoskins, Volkswa-  
gen  
Paul J. Sincic, Wayne, Volkswa-  
gen  
C. D. McCullough, Wayne, Chev  
Plup  
Albert Meyer, Randolph, Chev  
1968  
David Vernon Evans, Wayne, Triump  
Roadster  
Gary L. Jenkins, Carroll, Olds  
Harlan Grimm, Hoskins, Chev  
1967  
Gerald Anderson, Wakefield, Chev  
1965  
Mildred F. Thompson, Wayne, Chev  
Robde's Body Shop, Carroll, Chev  
1964  
Kermit Benschoff, Carroll, Chev  
Plup  
David Tietgen, Wayne, Chevrolet  
1962  
Henry Carstens, Wayne, Ford  
1961  
Wayne Motor Express, Wayne, Comet  
Le Roy Rabass, Hoskins, Ford  
Gary V. Lund, Wayne, Ford  
Motta Bomer, Wayne, Pontiac  
1960  
Robert D. Petersen, Carroll, International Plup  
Raymond Kling, Wayne, Chev  
Harold C. Gishorn, Wayne, Pont  
1959  
Mrs. Janet O'Sullivan, Wayne, Plymouth  
1958  
Robert Shreck, Wayne, Ford  
Thomas J. Dorcy, Wayne, Volks  
1957  
Wayne Schmode, Wayne, Volka  
1954  
Gordon R. Nelson, Wayne, Chev  
1953  
Darold Kraemaer, Wayne, Chev  
Howard Gries, Hoskins, Ford  
1951  
Harrison Humphries, Wayne, Chev  
1949  
Henry Warrelmann, Wayne, Ddg Plup

**First Dixon County Survey Made in '57**

As soon as the first settlers arrived in Dixon County, it became necessary to establish legal boundary lines to minimize the danger of conflicting property lines.

The first survey was made in 1857 under federal government contract. The survey established township boundaries. Later, the townships were subdivided into sections and quarter corners and sixteenth corners were laid out as the necessity arose.

Early surveys were made under difficult conditions. The equipment was difficult to move over the rough uninhabited country.

The equipment was quite different from that used today. A chain 66 feet long, which consisted of 10 links each 7.92 inches long, was the principal instrument used. Much of the inaccuracy of early day land measurement could be attributed to the wear on the links of the chain as it was dragged through sand, dust and mud from one place to another.

**New Law Concerns Freedom Shares**

Henry E. Ley, Wayne County chairman for U.S. Savings Bonds, reports that recent legislation permits the redemption of Savings Notes (Freedom Shares) in the same manner as Series E Bonds.

Formerly, Freedom Shares had to be forwarded to a Federal Reserve Bank or the Treasurer of the United States for redemption.

Chairman Ley points out that this new legislation makes Freedom Shares an even more of a companion to Series E Bonds. Freedom Shares, issued on and after June 1, 1968, now pay five per cent, compounded semi-annually, if held to maturity of four and one-half years.

Freedom Shares may be purchased on the Payroll Savings Plan where you work or over the counter at your bank—in combination with Series E Bonds of the same or larger denomination. They must be held for one year before they may be redeemed.

**HAVE YOU COMPARED PRICES LATELY?**

*We have!*

**SAFEWAY**

Come, See Safeway's Prices on everything YOU ordinarily buy!

**Chunk Tuna**  
Sea Trader, Light meat, finest Safeway quality;  
6 1/2-oz. Can **25c**  
Guaranteed Value

**Hi-C Orange**  
Grand for lunchtime meals or for breakfast;  
46-oz. Can **25c**  
Safeway Value

**Baby Foods**  
Heinz Strained Fruits or Vegetables;  
Jar ... **10c**  
All-Star Value

**Peanut Butter**  
Nu-made, Chunky or Creamy Style; finest Safeway quality;  
12-oz. Jar **33c**  
Safeway Buy

**Gold Medal**  
Enriched, all-purpose sifted flour;  
10-lb. Bag **89c**

**Crackers**  
Melrose Brand, enjoy with soups or on casseroles;  
1-lb. Box **19c**  
Big Saving

**Libby Catchup**  
Helps foods to taste even better; (Family Size)  
20-oz. Bottle **28c**  
Safeway Bargain

**TWO-TEN**  
LUCERNE Low-Fat Milk  
1/2-Gallon Carton **49c**

**Facial Tissues**  
Truly Fine—2-ply, soft and strong; finest Safeway quality;  
Pkg. of 200 **19c**  
Buy Several

**Cake Mixes**  
Mr. Wright's asst'd layer-type mixes;  
Package **22c**

**Ice Milk**  
Lucerne, Vanilla or Triple Treat;  
Gallon **98c**  
Big Buy

**Liquid Bleach**  
White Magic, helps get whites whiter;  
Gal. Jug **39c**  
Safeway Saving

**Morton Dinners**  
Assorted, frozen  
11-oz. PKG. **36c**  
Discount Price

**Italian Bread**  
Skylark, Large slices of flavorful white bread; finest Safeway quality;  
20-oz. Loaf ... **23c**

**Cottage Cheese**  
Lucerne, Grade-A, Large or small curd; finest Safeway quality;  
2-lb. Ctn. **49c**  
1-lb. Carton ... 29c

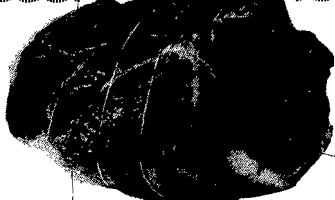
**Frozen Orange Juice** Scotch Treat, Pure, Florida juice 5 6-oz. Cans **\$1.00**  
**Peas or Corn** Bel-air, frozen 5 10-oz. Pkgs. **\$1.00**  
**Hash Brown Potatoes** Bel-air, frozen 2 1-lb. Pkg. **29c**

**Butter & Egg Bread** Skylark, Rich flavor 16-oz. Loaf **25c**  
**Lemon Stick Roll** Mrs. Wright's, Good 'n sweet 3 Pkg. **33c**  
Shop Safeway for a huge variety of fresh, homebaked flavor breads!

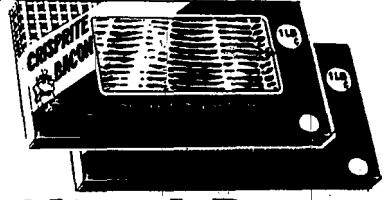
**Grade-A Large Eggs** Breakfast Gems Dozen **44c**  
**Lucerne Cream Cheese** First quality 3-oz. Package **10c**



**Red Potatoes**  
Good Quality, clean, smooth and uniform;  
20-lb. Bag **65c**



**Boneless Roasts**  
USDA Choice Grade, Aged Beef Rump Roasts with the ultimate in fine flavor, tenderness and grand-eating goodness. Boned, rolled, and tied for easy carving.  
**89c lb.**



**Sliced Bacon**  
Wilson's Crispire, serve with eggs for an enjoyable all-American Breakfast; a grand Safeway saving;  
1-lb. Package **49c**

Enjoy Safeway's Fresh 'n Crisp  
**CELERY**  
Grand for Salads, Soups, or Stew  
Large Stalk **15c**



**BEEF SWISS STEAKS** 79c  
BONELESS, USDA Choice Bottom Round . Lb.  
**TOP ROUND STEAKS** 89c  
BONELESS, USDA Choice Grade Beef . . . Lb.

**Chuck Steaks** USDA Choice Grade, Aged Beef . . . Lb. **69c**  
**Cube Steaks** BONELESS, Juicy Aged Beef . . . Lb. **98c**  
**Pork Steaks** Tender and juicy, Lean and meaty . . . Lb. **69c**  
**Pork Spareribs** Preferred small meaty sizes . . . Lb. **59c**

**Juice Oranges** Texas-grown, Plump and sweet. 6 1-lb. Bag **88c**  
**Pitted Prunes** Town House Brand. 12-oz. Pkg. **39c**

CASH NIGHT DRAWING in our store Thursday at 8 p.m. for \$250.00.

**SAFEWAY**  
... the place to save money!

**STEWING CHICKENS**  
Manor House, USDA Grade-A  
Cut-Up, Lb. ... **31c**

**Canned Picnics** Grand for breakfast 3-lb. Can **\$2.49**  
**Grade-A Fryers** Fresh, Enjoy fried or baked Whole, 1/2-lb. **33c**  
**Roasting Chickens** Fresh, 3 1/2-lb. sizes . Lb. **39c**  
**Chicken Thighs** Loaded with lots of tender meat . Lb. **59c**  
**Stewing Beef** Boneless cubes of USDA Choice Beef . . . Lb. **79c**  
**Beef Oxtails** Meaty, for soups or stews . . . Lb. **33c**  
**Lunch Meats** Sliced Salami or Pickle & Pimento. 1/2-lb. Pkg. **49c**  
**Braunschweiger** Grand for sandwiches . . . Lb. **59c**  
**Chopped Ham** For easy to prepare sandwiches. 1/2-lb. Pkg. **69c**

